



Village of Brownville
Sewage Effluent Disinfection Project Wastewater Treatment Plant
BCA Project No. 2021-007

Addendum No. 1

April 23, 2024

This addendum is hereby made part of the Contract Documents as though it were originally included therein and must be acknowledged by the bidder in the proper place on the bid form.

Project Manual and Plans

1. In all instances where the 12" stormwater overflow line is noted, please replace with "12" influent overflow line". This line spans from the headworks to the settling tanks. This is only a change in the terminology used to describe this bypass.

Project Manual

1. Reference "New York State Environmental Facilities Corporation Mandatory State Revolving Fund Terms and Conditions" cover page.
 - a. DELETE the cover page in its entirety, and SUBSTITUTE the attached cover page.
2. Reference "TABLE OF CONTENTS TO SPECIFICATION":
 - a. DELETE SECTION 08 3326 OVERHEAD COILING GRILLES in its entirety, and SUBSTITUTE the attached SECTION 08 3300 INSULATED ROLLING SERVICE DOOR.
3. Reference SECTION 46 6664 UV DISINFECTION EQUIPMENT, Paragraph 2.02 I.3, "The low water level sensor...":
 - a. DELETE "The low water level sensor will be powered by the Power Distribution Center." in its entirety, and SUBSTITUTE the following: "A Local Control Panel (LCP) will be provided to power the low water level sensor. Electrical supply for the LCP will be provided by the PDC(s) and be 24 Volt DC."
4. Reference SECTION 46 6664 UV DISINFECTION EQUIPMENT, Paragraph 2.02 J.6, "Electrical supply to each Power Distribution Center...":
 - a. DELETE "4.6 kVA", and SUBSTITUTE "8.2 kVA".
5. Reference "Federal Wage Rates (Davis-Bacon Wage Rates)":
 - a. DELETE "Federal Wage Rates (Davis-Bacon Wage Rates)" in its entirety, and SUBSTITUTE the attached "Federal Wage Rates (Davis-Bacon Wage Rates)".

Project Plans

1. Reference Sheet D-1:
 - a. DELETE D-1 in its entirety, and SUBSTITUTE the attached sheet AD1/D-1.
2. Reference Sheet STP-001:
 - b. DELETE STP-001 in its entirety, and SUBSTITUTE the attached sheet AD1/STP-001.



3. Reference Sheet STP-100:

- a. **DELETE STP-100** in its entirety, and **SUBSTITUTE** the attached sheet **AD1/STP-100**.

4. Reference Sheet STP-101:

- a. **DELETE STP-101** in its entirety, and **SUBSTITUTE** the attached sheet **AD1/STP-101**.

5. Reference Sheet A-100:

- a. **DELETE A-100** in its entirety, and **SUBSTITUTE** the attached sheet **AD1/A-100**.

Please reference the attached Request for Information (RFI) Question and Answer Log for RFI responses to date 4/23/2024.

Respectfully Submitted,

BCA ARCHITECTS & ENGINEERS

Casey D. Dickinson, P.E

Associate Principal / Senior Civil Engineer





Mandatory State Revolving Fund Terms and Conditions

**For Contracts Funded with the NYS Clean Water State Revolving Fund
or Drinking Water State Revolving Fund**

Identify Contract Type prior to Advertisement for Bid:

- Construction**
 - Treatment Works and Drinking Water Projects**
 - Non-Treatment Works**

 - Non-Construction**
-

Effective October 1, 2023

New York State Environmental Facilities Corporation
625 Broadway, Albany, NY 12207-2997
P: (518) 402-6924
www.efc.ny.gov

**TABLE OF CONTENTS TO
SPECIFICATION FOR**

**Village of Brownville
Sewage Effluent Disinfection Project -
Wastewater Treatment Plant
Project No. 2021-007**

ALL CONTRACTORS:

Plan Deposit Policy
 Advertisement for Bids (EJCDC C-111)
 Instructions to Bidders (EJCDC C-200)
 Contract No. 1 – General Construction: Bid Form (EJCDC C-410)
 Contract No. 2 – Electrical: Bid Form (EJCDC C-410)
 Contract No. 3 – Mechanical: Bid Form (EJCDC C-410)
 Bid Bond (EJCDC C-430)
 Statement of Surety’s Intent
 Statement of Contractor’s Qualifications (EJCDC C-451)
 Contractor Certification (ST-220)
 Notice of Award (EJCDC C-510)
 Contract No. 1 – General Construction: Agreement Between Owner & Contractor (EJCDC C-520)
 Contract No. 2 – Electrical: Agreement Between Owner & Contractor (EJCDC C-520)
 Contract No. 3 – Mechanical: Agreement Between Owner & Contractor (EJCDC C-520)
 Performance Bond (EJCDC C-610)
 Payment Bond (EJCDC C-615)
 Certificate of Insurance
 Standard General Conditions (EJCDC C-700)
 Supplementary General Conditions (EJCDC C-800)
 Special Conditions
 Environmental Facilities Corporation Program Requirements and Bid Packet for
 Construction Contracts
 NYS Wage Rates
 Federal Wage Rates (Davis-Bacon Wage Rates)
 Temporary Construction Sign
 NYS Environmental Facilities Corporation Financing Signage
 NYS Water Quality Improvement Project Signage
 Notice to Proceed (EJCDC C-550)
 Contractor’s Application for Payment (EJCDC C-620)
 Contract Change Order (EJCDC C-941)
 Certificate of Substantial Completion (EJCDC C-625)

Technical Specifications

<u>SECTION</u>	<u>DIVISION 00 – PROCUREMENT REQUIREMENTS</u>
00 3113	Milestone Construction Schedule
<u>SECTION</u>	<u>DIVISION 01 – GENERAL REQUIREMENTS</u>
01 0000	General Requirements
01 2000	Price and Payment Procedures
01 2100	Allowances
01 2300	Alternates
01 3000	Administrative Requirements
01 3216	Construction Progress Schedule
01 3300	Submittal Procedures
01 4000	Quality Requirements
01 5000	Temporary Facilities and Controls
01 5213	Field Offices and Sheds
01 5713	Erosion and Sediment Control
01 6000	Product Requirements
01 7000	Execution Requirements
01 7123	Layout of Work
01 7329	Cutting and Patching

**TABLE OF CONTENTS TO
SPECIFICATION FOR**

**Village of Brownville
Sewage Effluent Disinfection Project -
Wastewater Treatment Plant
Project No. 2021-007**

01 7800	Closeout Submittals
01 7900	Demonstration and Training
<u>SECTION</u> 02 0150.99	<u>DIVISION 02 – EXISTING CONDITIONS</u> Site Restoration
<u>SECTION</u> 03 1000 03 2000 03 3000 03 3000.01	<u>DIVISION 03 – CONCRETE</u> Concrete Forming and Accessories Concrete Reinforcing Cast-In-Place Concrete Environmental Engineering Concrete Structures
<u>SECTION</u> 05 5000 05 5213 05 5305	<u>DIVISION 05 – METALS</u> Metal Fabrications Pipe and Tube Railing Metal Grating and Floor Plates
<u>SECTION</u> 06 1000 06 1753	<u>DIVISION 06 – WOOD, PLASTICS, & COMPOSITES</u> Rough Carpentry Shop-Fabricated Wood Trusses
<u>SECTION</u> 07 4113 07 4213 07 9005	<u>DIVISION 07 – THERMAL AND MOISTURE PROTECTION</u> Metal Roof Panels Metal Wall Panels Joint Sealers
<u>SECTION</u> 08 1613 08 3300 08 5113 08 7100 08 8000	<u>DIVISION 08 – OPENINGS</u> Fiberglass Doors Insulated Rolling Service Door Aluminum Windows Door Hardware Glazing
<u>SECTION</u> 09 9000	<u>DIVISION 09 – FINISHES</u> Paints and Coatings
<u>SECTION</u> 23 0593 23 3100 23 3416 23 3700	<u>DIVISION 23 – MECHANICAL</u> Testing, Adjusting, and Balancing for HVAC HVAC Ducts and Casings Centrifugal HVAC Fans Air Outlets and Inlets
<u>SECTION</u> 26 0519 26 0526 26 0529 26 0533.13 26 0533.16 26 2717 26 2726 26 2818 26 5100 26 5600	<u>DIVISION 26 – ELECTRICAL</u> Low-Voltage Electrical Power Conductors and Cables Grounding and Bonding for Electrical Systems Hangers and Supports for Electrical Systems Conduit for Electrical Systems Boxes for Electrical Systems Equipment Wiring Wiring Devices Enclosed Switches Interior Lighting Exterior Lighting

**TABLE OF CONTENTS TO
SPECIFICATION FOR**

**Village of Brownville
Sewage Effluent Disinfection Project -
Wastewater Treatment Plant
Project No. 2021-007**

<u>SECTION</u>	<u>DIVISION 31 – EARTHWORK</u>
31 2200	Grading
31 2316	Excavation
31 2316.13	Trenching
31 2323	Fill & Backfill
<u>SECTION</u>	<u>DIVISION 40 – PROCESS INTEGRATION</u>
40 0559	Hydraulic Gates
<u>SECTION</u>	<u>DIVISION 44 – POLLUTION CONTROL EQUIPMENT</u>
44 0001	Launder Weirs
44 0002	Tilting Scum Trough
44 4273	FRP Insulated Flat Panel Covers
<u>SECTION</u>	<u>DIVISION 46 – WATER AND WASTEWATER EQUIPMENT</u>
46 0063	Unit Process – Secondary Clarifiers
46 4311	Chain and Flight Clarifier Equipment
46 6664	Ultraviolet Disinfection Equipment

Village of Brownville Sewage Treatment Facility Contract Drawings
(Dated July 1, 1968; Prepared by O'Brien & Gere; Includes Contract Nos. 1 – 4)

**SECTION 08 3300
INSULATED ROLLING SERVICE DOOR**

PART 1 GENERAL

1.01 SUMMARY

- A. Section includes manual overhead insulated rolling doors.

1.02 RELATED REQUIREMENTS

- A. Section 05 5000 – Metal Fabrications: Door opening jamb and head members.
B. Section 06 1000 – Rough Carpentry: Door opening jamb and head members.
C. Section 08 7100 – Door Hardware: Padlocks. Masterkeyed cylinder.
D. Section 09 9000 – Paints and Coatings: Field painting.
E. Division 26: Electrical wiring and conduit, fuses, disconnect switches, connection of operator to power supply, and installation of control station and wiring.
F. Products that may be supplied but are not installed under this Section:
1. Control station.

1.03 SYSTEM DESCRIPTION

- A. Design Requirements:
1. Wind Loading: Supply doors to be operational up to 20 PSF maximum wind load.
2. Cycle Life: Design doors of standard construction for normal use of up to 20 cycles per day maximum, and an overall maximum of 50,000 operating cycles for the life of the door.
3. Seismic Performance: Provide manufacturer's seismic calculations confirming ASCE7-10.
4. Insulated Door Slat Material Requirements:
a. Flame Spread Index of 0 and a Smoke Developed Index of 10 as tested per ASTM E84.
b. Minimum R-value of 8.0 (U-value of 0.125) as calculated using the ASHRAE Handbook of Fundamentals.
c. Insulation to be CFC Free with an Ozone Depletion Potential (ODP) rating of zero.
5. Safety: Chain operated doors shall be designed so that the door immediately stops upward or downward travel and is maintained in a stationary position when no pressure is applied to the control chains.

1.04 SUBMITTALS

- A. Reference Section 01 3000 – Administrative Requirements; submit the following items:
1. Product Data.
2. Shop Drawings: Include special conditions not detailed in Product Data. Show interface with adjacent work.
3. Quality Assurance/Control Submittals.
a. Provide Manufacturer ISO 9001:2015 registration.
b. Provide manufacturer and installer qualifications - see below.
c. Provide manufacturer's installation instructions.
4. Closeout Submittals:
a. Operation and Maintenance Manual
b. Certificate stating that installed materials comply with this specification.

1.05 QUALITY ASSURANCE

- A. Qualifications:
1. Manufacturer Qualifications: ISO 9001:2015 registered and a minimum of 5 years experience in producing doors of the type specified.
2. Installer Qualifications: Manufacturer's approval.

1.06 DELIVERY STORAGE AND HANDLING

- A. Reference Section 01 66 00 Product Storage and Handling Requirements
B. Follow manufacturer's instructions.

1.07 WARRANTY

- A. Standard Warranty: 2 years from date of shipment against defects in material and workmanship.
- B. Maintenance: Submit for Owner's consideration and acceptance of a maintenance service agreement for installed products.

PART 2 PRODUCTS

2.01 MANUFACTURER

- A. Manufacturers:
 - 1. Cornell: 24 Elmwood Avenue, Mountain Top, PA 18707. Telephone: (800) 233-8366.
 - a. Model ESD20.
 - 2. Overhead Door Corporation: www.overheaddoor.com.
 - 3. Or approved equal.
 - 4. Substitutions: See Section 01 6000 – Product Requirements.

2.02 MATERIALS

- A. Curtain:
 - 1. Fabrication:
 - a. Slat Material: No. 6F, (Listed Exterior/Interior):
 - 1) Aluminum/Aluminum: 0.040" aluminum.
 - b. Insulation: 7/8" foamed-in-place, closed cell urethane.
 - c. Total Slat Thickness: 15/16".
 - d. Flame Spread Index: 0.
 - e. Smoke Developed Index: 10 as tested per ASTM E84
 - f. R-value: 8.0.
 - 2. Exterior Aluminum Slat Finish: Mill finish.
 - 3. Interior Aluminum Slat Finish: Aluminum: Mill finish.
- B. Endlocks: Fabricate interlocking sections with high strength nylon endlocks on alternate slats each secured with two (2) 1/4" rivets. Provide windlocks as required to meet specified wind load.
 - 1. Nylon: Required up to 21'-5" width (DBG - Distance Between Guides).
- C. Bottom Bar:
 - 1. Configuration: Heavy Duty Bottom Bar: 6" x 2" x 3/8" aluminum tubular extrusion configured to withstand 350% more impact than standard bottom bar. (Doors up to 12' wide; interior mounted only.)
 - 2. Exterior Finish: Match slats.
- D. Guides:
 - 1. Fabrication: Minimum 3/16" aluminum angles. Provide windlock bars of same material when windlocks are required to meet specified wind load. Top of inner and outer guide angles to be flared outwards to form bellmouth for smooth entry of curtain into guides. Provide removable guide stoppers to prevent over travel of curtain and bottom bar.
 - 2. Aluminum Finish: Mill finish.
- E. Counterbalance Shaft Assembly:
 - 1. Barrel: Steel pipe capable of supporting curtain load with maximum deflection of 0.03" per foot of width.
 - 2. Spring Balance: Oil-tempered, heat-treated steel helical torsion spring assembly designed for proper balance of door to ensure that maximum effort to operate will not exceed 25 lbs. Provide wheel for applying and adjusting spring torque.
- F. Brackets:
 - 1. Fabricate from minimum 3/16" steel plate with permanently lubricated ball or roller bearings at rotating support points to support counterbalance shaft assembly and form end closures.
 - 2. Corrosion Inhibitive Finish: Zirconium treatment followed by a corrosion inhibitive baked-on zinc enriched gray polyester powder coat; minimum 2.5 mils cured film thickness.
- G. Hood: Minimum 0.040" aluminum with reinforced top and bottom edges. Provide minimum 1/4" steel intermediate support brackets as required to prevent excessive sag.
 - 1. Aluminum: Mill finish.

- H. Weatherstripping:
 - 1. Bottom Bar, Manually Operated Doors: Replaceable, bulb-style, compressible EDPM gasket extending into guides.
 - 2. Guides: Replaceable vinyl strip on guides sealing against both sides of curtain.
 - 3. Hood: Neoprene/rayon baffle to impede air flow above coil.
 - 4. Lintel Seal: Nylon brush seal fitted at door header to impede air flow.

2.03 OPERATION

- A. Manual ControlGard Chain Hoist: Provide chain hoist operator with endless steel chain, chain pocket wheel and guard, geared reduction unit, and chain keeper secured to guide. Chain hoist to include integral brake mechanism that will immediately stop upward or downward travel and maintain the door in a stationary position when the hand chain is released by the user.

2.04 ACCESSORIES

- A. Locking: Padlockable chain keeper on guide (manual chain operated).

PART 3 EXECUTION

3.01 EXAMINATION

- A. Examine substrates upon which work will be installed and verify conditions are in accordance with approved shop drawings.
- B. Coordinate with responsible entity to perform corrective work on unsatisfactory substrates.
- C. Commencement of work by installer is acceptance of substrate.

3.02 INSTALLATION

- A. General: Install door and operating equipment with necessary hardware, anchors, inserts, hangers and supports.
- B. Follow manufacturer's installation instructions.

3.03 ADJUSTING

- A. Following completion of installation, including related work by others, lubricate, test, and adjust doors for ease of operation, free from warp, twist, or distortion.

3.04 CLEANING

- A. Clean surfaces soiled by work as recommended by manufacturer.

3.05 REMOVE SURPLUS MATERIALS AND DEBRIS FROM THE SITE.

3.06 DEMONSTRATION

- A. Demonstrate proper operation to Owner's Representative.
- B. Instruct Owner's Representative in maintenance procedures.

END OF SECTION

"General Decision Number: NY20240009 04/05/2024

Superseded General Decision Number: NY20230009

State: New York

Construction Types: Heavy and Highway

Counties: Jefferson, Lewis and St Lawrence Counties in New York.

HEAVY AND HIGHWAY CONSTRUCTION PROJECTS:

Note: Contracts subject to the Davis-Bacon Act are generally required to pay at least the applicable minimum wage rate required under Executive Order 14026 or Executive Order 13658. Please note that these Executive Orders apply to covered contracts entered into by the federal government that are subject to the Davis-Bacon Act itself, but do not apply to contracts subject only to the Davis-Bacon Related Acts, including those set forth at 29 CFR 5.1(a)(1).

<p>If the contract is entered into on or after January 30, 2022, or the contract is renewed or extended (e.g., an option is exercised) on or after January 30, 2022:</p>	<ul style="list-style-type: none"> . Executive Order 14026 generally applies to the contract. . The contractor must pay all covered workers at least \$17.20 per hour (or the applicable wage rate listed on this wage determination, if it is higher) for all hours spent performing on the contract in 2024.
<p>If the contract was awarded on or between January 1, 2015 and January 29, 2022, and the contract is not renewed or extended on or after January 30, 2022:</p>	<ul style="list-style-type: none"> . Executive Order 13658 generally applies to the contract. . The contractor must pay all covered workers at least \$12.90 per hour (or the applicable wage rate listed on this wage determination, if it is higher) for all hours spent performing on that contract in 2024.

The applicable Executive Order minimum wage rate will be adjusted annually. If this contract is covered by one of the Executive Orders and a classification considered necessary for performance of work on the contract does not appear on this wage determination, the contractor must still submit a conformance request.

Additional information on contractor requirements and worker protections under the Executive Orders is available at <http://www.dol.gov/whd/govcontracts>.

Modification Number Publication Date
 0 01/05/2024

1 03/08/2024
2 04/05/2024

BOIL0175-001 01/01/2021

	Rates	Fringes
BOILERMAKER.....	\$ 35.23	26.61

BRNY0002-012 06/01/2018

	Rates	Fringes
CEMENT MASON/CONCRETE FINISHER...	\$ 37.23	19.51

FOOTNOTE

a. Paid Holidays: Memorial Day, July the 4th, Labor Day, and Thanksgiving Day (provided the employee is employed one day before and one day after the holiday).

CARP0277-007 07/01/2022

	Rates	Fringes
Carpenters: HEAVY & HIGHWAY CONSTRUCTION.....	\$ 34.13	25.30

a. PAID HOLIDAYS: New Year's Day, Memorial Day, Independence Day, Labor Day, Thanksgiving Day, Christmas Day

ELEC0910-005 04/01/2023

	Rates	Fringes
ELECTRICIAN.....	\$ 40.50	5.75%+23.13

ELEC1249-003 05/01/2023

	Rates	Fringes
ELECTRICIAN (LINE CONSTRUCTION: LIGHTING AND TRAFFIC SIGNAL Including any and all Fiber Optic Cable necessary for Traffic Signal Systems, Traffic Monitoring systems and Road Weather information systems)		
Flagman.....	\$ 29.59	7%+35.40
Groundman (Truck Driver)....	\$ 39.46	7%+35.40
Groundman Truck Driver (tractor trailer unit).....	\$ 41.92	7%+35.40
Lineman & Technician.....	\$ 49.32	7%+35.40
Mechanic.....	\$ 39.46	7%+35.40

FOOTNOTE:

a. New Year's Day, Memorial Day, Independence Day, Labor Day, Thanksgiving Day, Christmas Day, plus President's Day, Good Friday, Decoration Day, Election Day for the President of the United States and Election Day for the Governor of the State of New York, provided the employee works the day

before or the day after the holiday.

 ELEC1249-004 05/01/2023

	Rates	Fringes
ELECTRICIAN (Line Construction)		
Overhead and underground distribution and maintenance work and all overhead and underground transmission line work including any and all fiber optic ground wire, fiber optic shield wire or any other like product by any other name manufactured for the dual purpose of ground fault protection and fiber optic capabilities :		
Flagman.....	\$ 34.44	7%+35.40
Groundman digging machine operator.....	\$ 51.66	7%+35.40
Groundman truck driver (tractor trailer unit)....	\$ 48.79	7%+35.40
Groundman Truck driver.....	\$ 45.92	7%+35.40
Lineman and Technician.....	\$ 57.40	7%+38.40
Mechanic.....	\$ 45.92	7%+35.40
Substation:		
Cable Splicer.....	\$ 63.14	7%+38.40
Flagman.....	\$ 34.44	7%+35.40
Ground man truck driver....	\$ 45.92	7%+35.40
Groundman digging machine operator.....	\$ 51.66	7%+35.40
Groundman truck driver (tractor trailer unit)....	\$ 48.79	7%+35.40
Lineman & Technician.....	\$ 57.40	7%+38.40
Mechanic.....	\$ 45.92	7%+35.40
Switching structures; railroad catenary installation and maintenance, third rail type underground fluid or gas filled transmission conduit and cable installations (including any and all fiber optic ground product by any other name manufactured for the dual purpose of ground fault protection and fiber optic capabilities), pipetype cable installation and maintenance jobs or projects, and maintenance bonding of rails; Pipetype cable installation		
Cable Splicer.....	\$ 64.59	7%+38.40
Flagman.....	\$ 35.23	7%+35.40
Groundman Digging Machine Operator.....	\$ 52.85	7%+35.40

Groundman Truck Driver (tractor-trailer unit).....	\$ 49.91	7%+35.40
Groundman Truck Driver.....	\$ 46.98	7%+35.40
Lineman & Technician.....	\$ 58.72	7%+38.40
Mechanic.....	\$ 46.98	7%+35.40

FOOTNOTE:

a. PAID HOLIDAYS: New Year's Day, Presidents' Day, Memorial Day, Good Friday, Independence Day, Labor Day, Thanksgiving Day, Christmas Day, and Election Day for the President of the United States and Election Day for the Governor of New York State, provided the employee works two days before or two days after the holiday.

ELEC1249-008 01/01/2022

	Rates	Fringes
ELECTRICIAN (Line Construction) TELEPHONE, CATV FIBEROPTICS CABLE AND EQUIPMENT		
Cable splicer.....	\$ 36.28	3%+5.14
Groundman.....	\$ 18.25	3%+5.14
Installer Repairman- Teledata Lineman/Technician- Equipment Operator.....	\$ 34.43	3%+5.14
Tree Trimmer.....	\$ 28.25	3%+10.23

a. New Year's Day, President's Day, Good Friday, Decoration Day, Independence Day, Labor Day, Veteran's Day, Thanksgiving Day, Day after Thanksgiving, Christmas Day.

ELEV0062-002 01/01/2024

	Rates	Fringes
ELEVATOR MECHANIC.....	\$ 56.01	37.885+a+b

FOOTNOTE:

a. Vacation: 6%/under 5 years based on regular hourly rate for all hours worked. 8%/over 5 years based on regular hourly rate for all hours worked.

b. PAID HOLIDAYS: New Year's Day; Memorial Day; Independence Day; Labor Day; Veterans' Day; Thanksgiving Day; the Friday after Thanksgiving Day; and Christmas Day.

ENGI0158-010 07/01/2017

LEWIS AND ST LAWRENCE COUNTIES

	Rates	Fringes
Power Equipment Operator BUILDING		
GROUP 1.....	\$ 36.84	23.80+a
GROUP 2.....	\$ 34.78	23.80+a
GROUP 3.....	\$ 30.68	23.80+a
GROUP 4.....	\$ 38.84	23.80+a

POWER EQUIPMENT OPERATORS CLASSIFICATIONS (BUILDING)

GROUP 1: Air plako, asphalt and blacktop roller, automated concrete spreader (CMI or equivalent), automated fine grade machine (CMI), backhoe, Belt placer, blacktop spreader (such as barber Greene & Blaw Knox), blacktop plant (automated), blast or rotary drill (truck or cat mounted), boom truck, cableway, caisson auger, Carry-all Scraper (self-loading), central mix plant (automated), cherry picker (15 ton capacity), Compressor, pump, generator or welding machine (when used in a battery of not more than 4); crane, crusher (rock), derrick, diesel power unit, dragline, dredge, dual drum paver, elevating grader (self-propelled) or towed, elevator hoist (2 cage), excavator (all purpose-hydraulically operated), fork lift (load and lull and other rough terrain type), front end loader (4 c.y. and over), gradall, grader (power), head tower (Saurman or equal), host (2 or 3 drums), hydroblaster (laser pump), (LCM's) work boat operator, light plants (compressors and generators), locomotive, maintenance engineer, maintenance welder, mine hoist, mucking machine or mole, overhead crane -fixed permanent, pile driver, quarry master or equivalent, refrigeration equipment (for soil stabilization), sea mule, shovel, side boom, slip form paver, straddle buggy (ross carrier, lumber carrier), tractor drawn belt type loader (Euclid loader), tranching machine (digging capacity of over 4 ft depth), truck crane (operator), truck or trailer mounted log chipper (self feeder), tug operator (except, rented equipment), tunnel shovel, vibro or sonic hammer controls (when not mounted in proximity to the rig operator

GROUP 2: ""A"" frame truck, blacktop plant (non automatic), All Back Dumps, boring machine, bulldozer, cagehoist, Carry-all scraper, central mix plant (non automated), cherry picker 15 tons and under), Compressor (500 C.F. and over), concrete paver (single drum over 16S), Concrete Pump, core boring machine, drill rigs (tractor mounted), elevator (as a material hoist), fork lift (all others), front end loader (under 4 c.y.), gunite machine, high pressure boiler 15 lbs & over), hoist (one drum), hydraulic breaking hammer (drop hammer), Kolman plant loader (screening gravel), maintenance grease man, mixer for stabilized base (self propelled Seaman mixer), monorail machine, parapet concrete or pavement grinder, post hole digger (truck or tractor mounted), power sweeper (wayne or similar), pump (4"" and over, pump-crete or squeeze-crete, road widener (front end of grader or self prop.), roller, self contained hydraulic bench drill, shell winder (motorized), snorkel (overhead arms), snowblower control man, trenching machine (digging capacity of 4 ft or less), tigger hoist, vibrotamp, well drill, well point system, winch (motor driver), winch cat, winch truck (submersible pumps when used in lieu of well point system

GROUP 3: Compressor (up to 500 C.F.), concrete paver or mixer (under 16S), concrete pavement spreaders and finishers (not automated), conveyor (over 12 ft), electric submersible pump (4"" and over), farm tractor with or without accessories, fine grade machine (not automated), fireman, form tamper, generator (2,500 Watts and over), grout pump, hydraulic pump, mechanical heaters (more than 2 mechanical heaters or any mechanical heater or heaters whose combined output exceeds 640,000 BTU per hour

(manufacturer's rating) plus one contained heating unit (i.e. sundog, air heat type, new Holland hay dryer type excluded), mulching machine, oiler, power driven welding machine - 300 amp. and over (other than all electric), power heaterman (hay dryer), pump (under 4""), revinus widener (road widener), single light plant, steam cleaner or jenny, tractor with or without towed accessories

GROUP 4: Master mechanic

PREMIUMS:

Hazmat work 2.50
Quad 9 Bulldozer or Multibowl Scraper .50

CRANE PREMIUMS (Add to Group 1 Rate):

All Lattice Boom Cranes (65 ton capacity and over) Group 1 Rate Plus 1.75
All Hydraulic Cranes (100 ton capacity and over) Group 1 Rate Plus 1.75
All Hydraulic Cranes (80 ton capacity to 99 ton capacity) Group 1 Rate Plus 1.25
All Hydraulic Cranes (65 ton capacity to 79 ton capacity) Group 1 Rate Plus 1.10

FOOTNOTE:

a. PAID HOLIDAYS: New Year's Day, Memorial Day, Independence Day, Labor Day, Thanksgiving Day, and Christmas Day provided the employee has worked five consecutive working days before and the working day after the holiday.

ENGI0158-020 07/01/2022

Table with 2 columns: Rates and Fringes. Rows include Power equipment operators: GROUP 1 through GROUP 7 with corresponding rates and fringe percentages.

POWER EQUIPMENT OPERATORS CLASSIFICATIONS

GROUP 1: Asphalt Curb Machine, Self Propelled, Slipform, Automated Concrete Spreader (CMI Type), Automatic Fine Grader, Backhoe (Except Tractor Mounted, Rubber Tired), Backhoe Excavator Full Swing (CAT 212 or similar type), Back Filling Machine, Belt Placer (CMI Type), Blacktop Plant (Automated), Boom truck , Cableway, Caisson Auger, Central Mix Concrete Plant (Automated), Concrete Curb Machine, Self Propelled, Slipform, Concrete Pump, Crane, Cherry Picker, Derricks (steel erection), Dragline, Overhead Crane (Gantry or Straddle type), Pile Driver, Truck Crane, Directional Drilling Machine, Dredge, Dual Drum Paver, Excavator (All Purpose Hydraulically Operated) (Gradall or Similar), Front End Loader (4 cu. yd. and Over), Head Tower (Sauerman or Equal), Hoist (Two or Three Drum), Holland Loader, Maintenance Engineer, Mine Hoist, Mucking Machine or Mole Pavement Breaker(SP) Wertgen; PB-4 and similar type, Power Grader, Profiler (over 105 H.P.) Quad 9, Quarry Master (or equivalent), Scraper, Fireman,

Fork Lift, Form Tamper, Grout Pump, Gunite Machine, Hammers (Hydraulic self-propelled), Hydra-Spiker, ride-on, Hydraulic Pump (jacking system), Hydro-Blaster (Water), Mulching Machine, Oiler, Parapet Concrete or Pavement, Shovel, Side Boom, Slip Form Paver, Tractor Drawn, BeltType Loader, Truck or Trailer Mounted Log , Chipper (Self Feeder), Tug Operator (Manned Rented Equipment Excluded), Tunnel Shovel

GROUP 2: Asphalt Paver, Backhoe (Tractor Mounted, Rubber Tired), Bituminous Recycler Machine, Bituminous Spreader and Mixer, Blacktop Plant (NonAutomated), Blast or Rotary Drill (Truck or Tractor Mounted), Boring Machine, Cage Hoist, Central Mix Plant (NonAutomated) and All Concrete Batching Plants, Cherry Picker (5 tons capacity and under), Concrete Paver (Over 16S), Crawler Drill, Self-contained, Crusher, Diesel Power Unit, Drill Rigs, Tractor Mounted, Front End Loader (Under 4 cu. yd.), Greaseman/Lubrication Engineer, HiPressure Boiler (15 lbs. and over), Hoist (One Drum), Hydro-Axe, Kolman Plant Loader and Similar Type Loaders, L.C.M. Work Boat Operator, Locomotive Mixer (for stabilized base selfpropelled), Monorail Machine, Plant Engineer, Profiler (105 H.P. and under), Grinder, Post Hole Digger and Post Driver, Power Broom (towed), Power Heaterman, Power Sweeper, Revinius Widener, Roller (Grade and Fill), Scarifier, ride-on, Shell Winder, Skid steer loader (Bobcat or similar), Span-Saw, ride-on, Steam Cleaner, Pug Mill, Pump Crete Ready Mix Concrete Plant Refrigeration Equipment (for soil stabilization)Road Widener, Roller (all above subgrade), Sea Mule, Self-contained Ride-on Rock Drill, Excluding Air-Track Type Drill, Skidder, Tractor with Dozer and/or Pusher, Trencher. Tugger Hoist, Vermeer saw (ride on, any size or type), Winch, Winch Cat

GROUP 3: A Frame Winch Hoist on Truck , Articulated Heavy Hauler, Aggregate Plant, Asphalt or Concrete Grooving, Machine (ride on), Ballast Regulator, Ride-on Boiler (used in conjunction with production), Bituminous Heater, self-propelled, Boat (powered), Cement and Bin Operator, Compressors, Dust Collectors, Generators, Pumps, Welding Machines, Light Plants, Heaters (hands-off equipment), Concrete Pavement Spreader and Finisher, Concrete Paver or Mixer (16S and under), Concrete Saw (self-propelled), Conveyor, Deck Hand, Directional Drill Machine Locator, Drill, (Core), Drill, (Well,) Farm Tractor with accessories, Fine Grade Machine, Tamper, ride-on, Tie Extractor, ride-on, Tie Handler, ride-on, Tie Inserter, ride-on, Tie Spacer, ride-on, Tire Repair, Track Liner, ride-on, Tractor, Tractor (with towed accessories), Vibratory Compactor, Vibro Tamp, Well Point

GROUP 4: Tower Cranes

GROUP 5: Cranes 50 tons and over

GROUP 6: Cranes 49 tons and below

GROUP 7: Master Mechanic

FOOTNOTE:

a. New Year's Day, Memorial Day, Independence Day, Labor Day, Thanksgiving Day, Christmas Day provided the employee

has worked the working day before and the working day after the holiday.

IRON0060-003 07/01/2023

HEAVY/HIGHWAY CONSTRUCTION

JEFFERSON COUNTY (Townships of Adams, Alexandria, Brownsville, Cape Vincent, Clayton, Ellisburg, Henderson, Housfield, Le Ray, Lorraine, Lyme, Orleans, Pamelaia, Rodman, Rutland, Theresa, Watertown and Worth)

Rates Fringes

IRONWORKER

Structural, Ornamental, reinforcing precast concrete erector, machinery mover & rigger, fence erector, stone derrickman, welder, sheeter, sheeter bucket-up..\$	33.00	30.83
---	-------	-------

IRON0440-005 07/01/2023

HEAVY/HIGHWAY CONSTRUCTION (REMAINDER OF JEFFERSON COUNTY)

LEWIS AND ST. LAWRENCE COUNTIES BUILDING/HEAVY/HIGHWAY CONSTRUCTION

Rates Fringes

IRONWORKER

STRUCTURAL, ORNAMENTAL, RODMAN, MACHINERY MOVERS & RIGGER, FENCE ERECTOR, REINFORCING, STONE DERRICKMAN.....\$	32.00	31.00
--	-------	-------

LAB01822-004 07/01/2023

LEWIS AND ST. LAWRENCE COUNTIES ONLY

JEFFERSON, LEWIS AND ST. LAWRENCE COUNTIES

Rates Fringes

Laborers:

HEAVY & HIGHWAY		
GROUP 1.....\$	31.27	27.80+a
GROUP 2.....\$	31.27	27.80+a
GROUP 3.....\$	31.47	27.80+a
GROUP 4.....\$	31.67	27.80+a
GROUP 5.....\$	34.27	27.80+a

FOOTNOTE:

a. New Year's Day, Memorial Day, Independence Day, Labor Day, Thanksgiving Day, Christmas Day, provided the employee has worked the working day before the holiday and working day after the holiday.

LABORER CLASSIFICATIONS

GROUP 1: Laborers, flaggers, outboard and hand boats.

GROUP 2: Bull float, chain saw, concrete aggregate, bin concrete bootman, gin buggy, hand or machine vibrator, jackhammer, mason tender, mortar mixer, pavement breaker, handlers of all steel mesh, small generators for laborers; tools, installation of bridge drainage pipe, pipelayers, vibrator type rollers, tamper, drill doctor, tail or screw operator on asphalt paver, water pump operator (1 1/2 inch and single diaphragm), nozzle (asphalt, gunnite, seeding and sandblasting), laborers on chain link fence erection, rock splitter and power unit, pusher type concrete saw and all other gas, electric, oil and air tool operators, wrecking laborer.

GROUP 3: All rock or drill machine operators (except quarry master and similar type, acetylene torch operators, asphalt raker, powerderman.

GROUP 4: Blasters, form setters, stone or granite curb setters.

GROUP 5: Hazardous waste removal.

 PAIN004-022 05/01/2023

LEWIS COUNTY (Townships of High Market, Lewis, Leyden, Lyonsdale, Osceola, Turin and West Turin)

	Rates	Fringes
Painter, Bridge HEAVY & HIGHWAY CONSTRUCTION Bridges.....	\$ 42.06	30.59
Painter: BUILDING CONSTRUCTION Brush & Roll, Drywall Taping/Finishing.....	\$ 23.25	21.21
Spray/Sandblasting/Structural Steel.....	\$ 23.75	21.21

 PAIN004-026 05/01/2023

JEFFERSON COUNTY; LEWIS COUNTY (Townships of Diana, Croghan, New Bremen, Watson, Greig, Martinsburg, Lwville, Denmark, Harrisburg, Montague and Pinckney); ST. LAWRENCE COUNTY

	Rates	Fringes
Painters: Bridge.....	\$ 42.06	30.59
Brush & Roll, Paperhanging, Wallcoverings.\$	23.25	21.21
Sandblasting.....	\$ 23.75	21.21
Steel Painting.....	\$ 23.75	21.21
Steel Spray Painting.....	\$ 23.75	21.21
Swing Staging, Window Jacks, Cup Spray Painting,		

Steam Cleaning and Hydro
Water Blasting.....\$ 23.75 21.21

PAIN0677-001 05/01/2023

Rates Fringes

GLAZIER.....\$ 28.05 27.95

PLUM0073-003 05/01/2019

JEFFERSON, LEWIS (Twps of Diana, Croghan, New Bremen, Watson, Greig, Martinsburg, Lewisville, Denmark, Harrisburg, Montague, Pinkney, Highmarket, Oscellia, and Turin) AND ST. LAWRENCE COUNTIES

Rates Fringes

Plumber and Steamfitter.....\$ 31.43 23.61

PLUM0112-004 05/01/2023

LEWIS COUNTY Townships of Lewis, Leyden, Lyonsdale, West Turin

Rates Fringes

PLUMBER (Including Steamfitting)
Northern Zone.....\$ 41.40 31.70

ROOF0195-001 06/01/2023

Rates Fringes

ROOFER.....\$ 32.25 25.51

SFNY0669-001 01/01/2024

Rates Fringes

SPRINKLER FITTER.....\$ 42.73 27.05

* SHEE0058-004 05/01/2023

LEWIS and ST. LAWRENCE COUNTIES

Rates Fringes

Sheet Metal Worker
Projects over \$10 million..\$ 35.25 22.60
Incl. HVAC Duct
Projects with sheetmetal
work totaling \$10 million
or less.....\$ 34.25 22.60

TEAM0687-001 06/01/2018

Rates Fringes

Truck drivers:
HEAVY & HIGHWAY
GROUP 1.....\$ 25.82 25.16+a
GROUP 2.....\$ 26.04 25.16+a

FOOTNOTE:

- a. PAID HOLIDAYS: New Year's Day, Memorial Day, Independence Day, Labor Day, Thanksgiving Day, and Christmas Day

TRUCK DRIVERS CLASSIFICATIONS:

GROUP 1: Pick-ups, panel trucks, flatboy material trucks (strait jobs), single axle dump trucks, dumpsters, greasers, truck tiremen,, parts chaser, tandems and batch trucks, mechanics, semi trailer, lowboy trucks, asphalt distributor trucks and agitator, mixer trucks and dumpcrete type vehicles, truck mechanic, fuel truck and bus

GROUP 2: Special earth moving quipment (euclid type), or similar off highway equipment, where not self loaded, straddle (ross) carrier, and self contained concrete mobile unit, off highway tandem back dump, twin engine equipment and double hitched equipment where not self loaded

WELDERS - Receive rate prescribed for craft performing operation to which welding is incidental.

=====

Note: Executive Order (EO) 13706, Establishing Paid Sick Leave for Federal Contractors applies to all contracts subject to the Davis-Bacon Act for which the contract is awarded (and any solicitation was issued) on or after January 1, 2017. If this contract is covered by the EO, the contractor must provide employees with 1 hour of paid sick leave for every 30 hours they work, up to 56 hours of paid sick leave each year. Employees must be permitted to use paid sick leave for their own illness, injury or other health-related needs, including preventive care; to assist a family member (or person who is like family to the employee) who is ill, injured, or has other health-related needs, including preventive care; or for reasons resulting from, or to assist a family member (or person who is like family to the employee) who is a victim of, domestic violence, sexual assault, or stalking. Additional information on contractor requirements and worker protections under the EO is available at <https://www.dol.gov/agencies/whd/government-contracts>.

Unlisted classifications needed for work not included within the scope of the classifications listed may be added after award only as provided in the labor standards contract clauses (29CFR 5.5 (a) (1) (iii)).

The body of each wage determination lists the classification and wage rates that have been found to be prevailing for the cited type(s) of construction in the area covered by the wage determination. The classifications are listed in alphabetical order of ""identifiers"" that indicate whether the particular rate is a union rate (current union negotiated rate for local), a survey rate (weighted average rate) or a union average rate (weighted union average rate).

Union Rate Identifiers

A four letter classification abbreviation identifier enclosed in dotted lines beginning with characters other than ""SU"" or ""UAVG"" denotes that the union classification and rate were prevailing for that classification in the survey. Example: PLUM0198-005 07/01/2014. PLUM is an abbreviation identifier of the union which prevailed in the survey for this classification, which in this example would be Plumbers. 0198 indicates the local union number or district council number where applicable, i.e., Plumbers Local 0198. The next number, 005 in the example, is an internal number used in processing the wage determination. 07/01/2014 is the effective date of the most current negotiated rate, which in this example is July 1, 2014.

Union prevailing wage rates are updated to reflect all rate changes in the collective bargaining agreement (CBA) governing this classification and rate.

Survey Rate Identifiers

Classifications listed under the ""SU"" identifier indicate that no one rate prevailed for this classification in the survey and the published rate is derived by computing a weighted average rate based on all the rates reported in the survey for that classification. As this weighted average rate includes all rates reported in the survey, it may include both union and non-union rates. Example: SULA2012-007 5/13/2014. SU indicates the rates are survey rates based on a weighted average calculation of rates and are not majority rates. LA indicates the State of Louisiana. 2012 is the year of survey on which these classifications and rates are based. The next number, 007 in the example, is an internal number used in producing the wage determination. 5/13/2014 indicates the survey completion date for the classifications and rates under that identifier.

Survey wage rates are not updated and remain in effect until a new survey is conducted.

Union Average Rate Identifiers

Classification(s) listed under the UAVG identifier indicate that no single majority rate prevailed for those classifications; however, 100% of the data reported for the classifications was union data. EXAMPLE: UAVG-OH-0010 08/29/2014. UAVG indicates that the rate is a weighted union average rate. OH indicates the state. The next number, 0010 in the example, is an internal number used in producing the wage determination. 08/29/2014 indicates the survey completion date for the classifications and rates under that identifier.

A UAVG rate will be updated once a year, usually in January of each year, to reflect a weighted average of the current negotiated/CBA rate of the union locals from which the rate is based.

WAGE DETERMINATION APPEALS PROCESS

1.) Has there been an initial decision in the matter? This can be:

- * an existing published wage determination
- * a survey underlying a wage determination
- * a Wage and Hour Division letter setting forth a position on a wage determination matter
- * a conformance (additional classification and rate) ruling

On survey related matters, initial contact, including requests for summaries of surveys, should be with the Wage and Hour National Office because National Office has responsibility for the Davis-Bacon survey program. If the response from this initial contact is not satisfactory, then the process described in 2.) and 3.) should be followed.

With regard to any other matter not yet ripe for the formal process described here, initial contact should be with the Branch of Construction Wage Determinations. Write to:

Branch of Construction Wage Determinations
 Wage and Hour Division
 U.S. Department of Labor
 200 Constitution Avenue, N.W.
 Washington, DC 20210

2.) If the answer to the question in 1.) is yes, then an interested party (those affected by the action) can request review and reconsideration from the Wage and Hour Administrator (See 29 CFR Part 1.8 and 29 CFR Part 7). Write to:

Wage and Hour Administrator
 U.S. Department of Labor
 200 Constitution Avenue, N.W.
 Washington, DC 20210

The request should be accompanied by a full statement of the interested party's position and by any information (wage payment data, project description, area practice material, etc.) that the requestor considers relevant to the issue.

3.) If the decision of the Administrator is not favorable, an interested party may appeal directly to the Administrative Review Board (formerly the Wage Appeals Board). Write to:

Administrative Review Board
 U.S. Department of Labor
 200 Constitution Avenue, N.W.
 Washington, DC 20210

4.) All decisions by the Administrative Review Board are final.

=====

END OF GENERAL DECISION"

"General Decision Number: NY20240022 03/08/2024

Superseded General Decision Number: NY20230022

State: New York

Construction Type: Building

County: Jefferson County in New York.

BUILDING CONSTRUCTION PROJECTS (does not include single family homes or apartments up to and including 4 stories).

Note: Contracts subject to the Davis-Bacon Act are generally required to pay at least the applicable minimum wage rate required under Executive Order 14026 or Executive Order 13658. Please note that these Executive Orders apply to covered contracts entered into by the federal government that are subject to the Davis-Bacon Act itself, but do not apply to contracts subject only to the Davis-Bacon Related Acts, including those set forth at 29 CFR 5.1(a)(1).

<p>If the contract is entered into on or after January 30, 2022, or the contract is renewed or extended (e.g., an option is exercised) on or after January 30, 2022:</p>	<ul style="list-style-type: none"> . Executive Order 14026 generally applies to the contract. . The contractor must pay all covered workers at least \$17.20 per hour (or the applicable wage rate listed on this wage determination, if it is higher) for all hours spent performing on the contract in 2024.
<p>If the contract was awarded on or between January 1, 2015 and January 29, 2022, and the contract is not renewed or extended on or after January 30, 2022:</p>	<ul style="list-style-type: none"> . Executive Order 13658 generally applies to the contract. . The contractor must pay all covered workers at least \$12.90 per hour (or the applicable wage rate listed on this wage determination, if it is higher) for all hours spent performing on that contract in 2024.

The applicable Executive Order minimum wage rate will be adjusted annually. If this contract is covered by one of the Executive Orders and a classification considered necessary for performance of work on the contract does not appear on this wage determination, the contractor must still submit a conformance request.

Additional information on contractor requirements and worker protections under the Executive Orders is available at <http://www.dol.gov/whd/govcontracts>.

Modification Number	Publication Date
0	01/05/2024
1	03/08/2024

ASBE0030-003 05/01/2023

	Rates	Fringes
ASBESTOS WORKER/HEAT & FROST INSULATOR (Duct, Pipe, & Mechanical System Insulation)....	\$ 38.50	25.04

BRNY0002-018 07/01/2017

	Rates	Fringes
BRICKLAYER (Includes Pointing, Caulking, and Cleaning).....	\$ 33.45	20.14

BRNY0002-020 07/01/2018

	Rates	Fringes
TILE SETTER.....	\$ 31.81	17.50

CARP1163-003 07/01/2021

	Rates	Fringes
MILLWRIGHT.....	\$ 30.20	23.83

ELEC0910-003 04/01/2023

	Rates	Fringes
ELECTRICIAN (Includes Low Voltage Wiring and Installation of Alarms, HVAC/Temperature Controls and Sound and Communication Systems).....	\$ 40.50	5.75%+23.13

ENGI0158-001 07/01/2022

	Rates	Fringes
POWER EQUIPMENT OPERATOR (Crane).....	\$ 41.42	29.17

* LAB01822-008 07/01/2023

	Rates	Fringes
LABORER		
Common or General.....	\$ 27.03	25.45
Mason Tender - Brick.....	\$ 27.03	25.45
Mason Tender - Cement/Concrete.....	\$ 27.03	25.45

PAIN0038-001 05/01/2017

	Rates	Fringes
DRYWALL FINISHER/TAPER.....	\$ 23.91	19.47
PAINTER (Spray).....	\$ 24.86	19.47

PLUM0073-004 05/01/2019

	Rates	Fringes
PIPEFITTER (Excludes HVAC Pipe Installation).....	\$ 31.43	23.61

 ROOF0195-004 06/01/2023

	Rates	Fringes
ROOFER.....	\$ 32.25	25.51

 * SFNY0669-003 01/01/2024

	Rates	Fringes
SPRINKLER FITTER (Fire Sprinklers).....	\$ 40.04	28.82

 SUNY2016-001 08/02/2017

	Rates	Fringes
CARPENTER, Includes Acoustical Ceiling Installation, Drywall Hanging, Form Work, and Metal Stud Installation.....	\$ 25.70	15.85
CEMENT MASON/CONCRETE FINISHER...	\$ 30.61	5.82
GLAZIER.....	\$ 29.52	11.47
IRONWORKER, ORNAMENTAL.....	\$ 28.70	22.02
IRONWORKER, REINFORCING.....	\$ 28.00	21.43
IRONWORKER, STRUCTURAL.....	\$ 29.41	21.63
LABORER: Asbestos Abatement (Removal from Floors, Walls, & Ceilings).....	\$ 29.18	17.72
LABORER: Asphalt, Includes Raker, Shoveler, Spreader and Distributor.....	\$ 20.89	10.46
LABORER: Pipelayer.....	\$ 20.47	0.00
OPERATOR: Backhoe/Excavator/Trackhoe.....	\$ 33.62	17.98
OPERATOR: Bobcat/Skid Steer/Skid Loader.....	\$ 36.17	17.76
OPERATOR: Bulldozer.....	\$ 31.60	21.52
OPERATOR: Forklift.....	\$ 33.14	21.04
OPERATOR: Paver (Asphalt, Aggregate, and Concrete).....	\$ 30.19	17.42
OPERATOR: Roller.....	\$ 27.74	5.89
PAINTER (Brush and Roller).....	\$ 22.32	13.95

PLUMBER, Includes HVAC Pipe Installation.....	\$ 33.72	16.03
--	----------	-------

SHEET METAL WORKER, Including Installation of HVAC Duct, Metal Flashing, and Siding (Aluminum, Metal, Vinyl).....	\$ 28.11	17.75
--	----------	-------

WELDERS - Receive rate prescribed for craft performing operation to which welding is incidental.

=====

Note: Executive Order (EO) 13706, Establishing Paid Sick Leave for Federal Contractors applies to all contracts subject to the Davis-Bacon Act for which the contract is awarded (and any solicitation was issued) on or after January 1, 2017. If this contract is covered by the EO, the contractor must provide employees with 1 hour of paid sick leave for every 30 hours they work, up to 56 hours of paid sick leave each year. Employees must be permitted to use paid sick leave for their own illness, injury or other health-related needs, including preventive care; to assist a family member (or person who is like family to the employee) who is ill, injured, or has other health-related needs, including preventive care; or for reasons resulting from, or to assist a family member (or person who is like family to the employee) who is a victim of, domestic violence, sexual assault, or stalking. Additional information on contractor requirements and worker protections under the EO is available at <https://www.dol.gov/agencies/whd/government-contracts>.

Unlisted classifications needed for work not included within the scope of the classifications listed may be added after award only as provided in the labor standards contract clauses (29CFR 5.5 (a) (1) (iii)).

The body of each wage determination lists the classification and wage rates that have been found to be prevailing for the cited type(s) of construction in the area covered by the wage determination. The classifications are listed in alphabetical order of ""identifiers"" that indicate whether the particular rate is a union rate (current union negotiated rate for local), a survey rate (weighted average rate) or a union average rate (weighted union average rate).

Union Rate Identifiers

A four letter classification abbreviation identifier enclosed in dotted lines beginning with characters other than ""SU"" or ""UAVG"" denotes that the union classification and rate were prevailing for that classification in the survey. Example: PLUM0198-005 07/01/2014. PLUM is an abbreviation identifier of the union which prevailed in the survey for this classification, which in this example would be Plumbers. 0198 indicates the local union number or district council number where applicable, i.e., Plumbers Local 0198. The next number, 005 in the example, is an internal number used in processing the wage determination. 07/01/2014 is the effective date of the

most current negotiated rate, which in this example is July 1, 2014.

Union prevailing wage rates are updated to reflect all rate changes in the collective bargaining agreement (CBA) governing this classification and rate.

Survey Rate Identifiers

Classifications listed under the "SU" identifier indicate that no one rate prevailed for this classification in the survey and the published rate is derived by computing a weighted average rate based on all the rates reported in the survey for that classification. As this weighted average rate includes all rates reported in the survey, it may include both union and non-union rates. Example: SULA2012-007 5/13/2014. SU indicates the rates are survey rates based on a weighted average calculation of rates and are not majority rates. LA indicates the State of Louisiana. 2012 is the year of survey on which these classifications and rates are based. The next number, 007 in the example, is an internal number used in producing the wage determination. 5/13/2014 indicates the survey completion date for the classifications and rates under that identifier.

Survey wage rates are not updated and remain in effect until a new survey is conducted.

Union Average Rate Identifiers

Classification(s) listed under the UAVG identifier indicate that no single majority rate prevailed for those classifications; however, 100% of the data reported for the classifications was union data. EXAMPLE: UAVG-OH-0010 08/29/2014. UAVG indicates that the rate is a weighted union average rate. OH indicates the state. The next number, 0010 in the example, is an internal number used in producing the wage determination. 08/29/2014 indicates the survey completion date for the classifications and rates under that identifier.

A UAVG rate will be updated once a year, usually in January of each year, to reflect a weighted average of the current negotiated/CBA rate of the union locals from which the rate is based.

WAGE DETERMINATION APPEALS PROCESS

1.) Has there been an initial decision in the matter? This can be:

- * an existing published wage determination
- * a survey underlying a wage determination
- * a Wage and Hour Division letter setting forth a position on a wage determination matter
- * a conformance (additional classification and rate) ruling

On survey related matters, initial contact, including requests for summaries of surveys, should be with the Wage and Hour National Office because National Office has responsibility for the Davis-Bacon survey program. If the response from this initial contact is not satisfactory, then the process described in 2.) and 3.) should be followed.

With regard to any other matter not yet ripe for the formal process described here, initial contact should be with the Branch of Construction Wage Determinations. Write to:

Branch of Construction Wage Determinations
Wage and Hour Division
U.S. Department of Labor
200 Constitution Avenue, N.W.
Washington, DC 20210

2.) If the answer to the question in 1.) is yes, then an interested party (those affected by the action) can request review and reconsideration from the Wage and Hour Administrator (See 29 CFR Part 1.8 and 29 CFR Part 7). Write to:

Wage and Hour Administrator
U.S. Department of Labor
200 Constitution Avenue, N.W.
Washington, DC 20210

The request should be accompanied by a full statement of the interested party's position and by any information (wage payment data, project description, area practice material, etc.) that the requestor considers relevant to the issue.

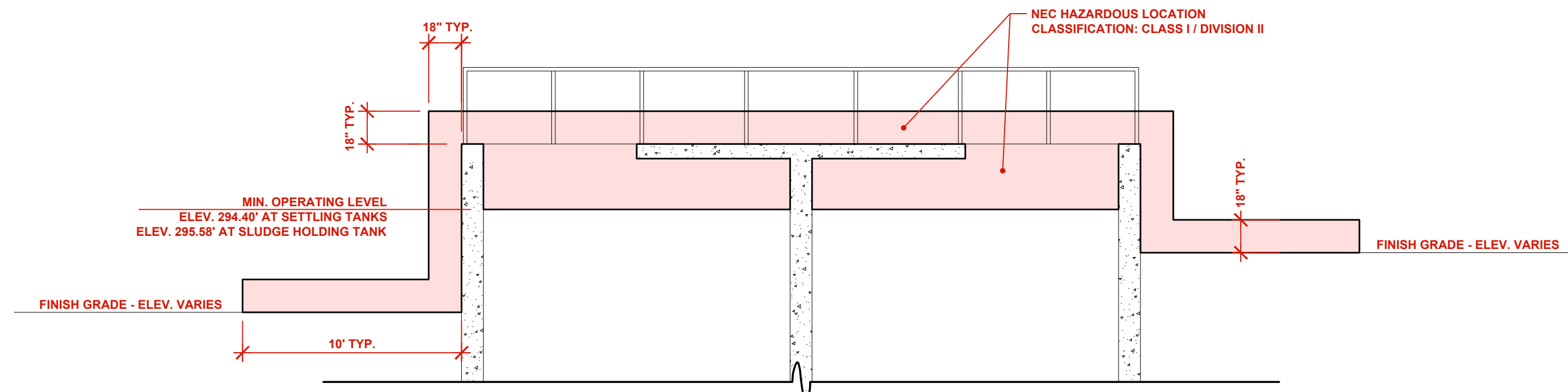
3.) If the decision of the Administrator is not favorable, an interested party may appeal directly to the Administrative Review Board (formerly the Wage Appeals Board). Write to:

Administrative Review Board
U.S. Department of Labor
200 Constitution Avenue, N.W.
Washington, DC 20210

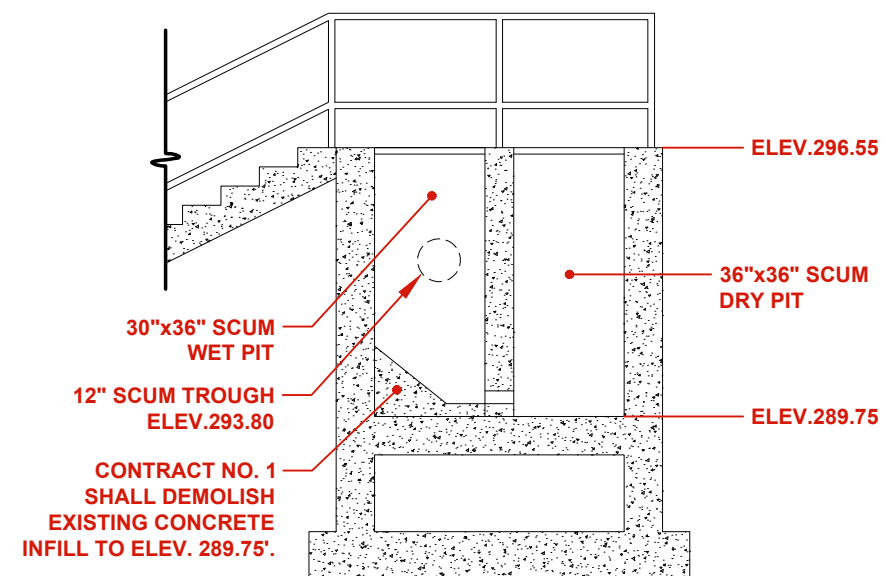
4.) All decisions by the Administrative Review Board are final.

=====

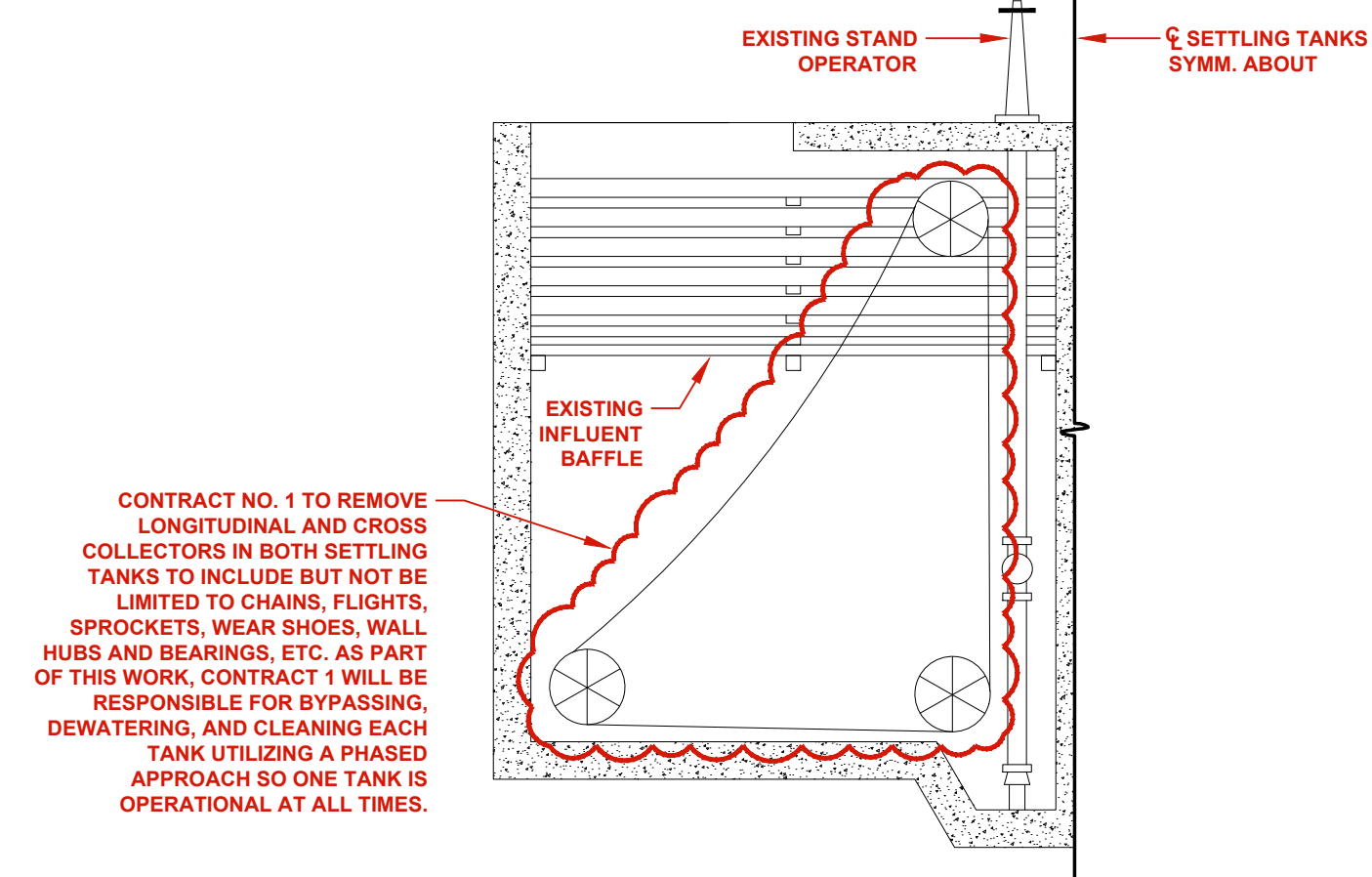
END OF GENERAL DECISION"



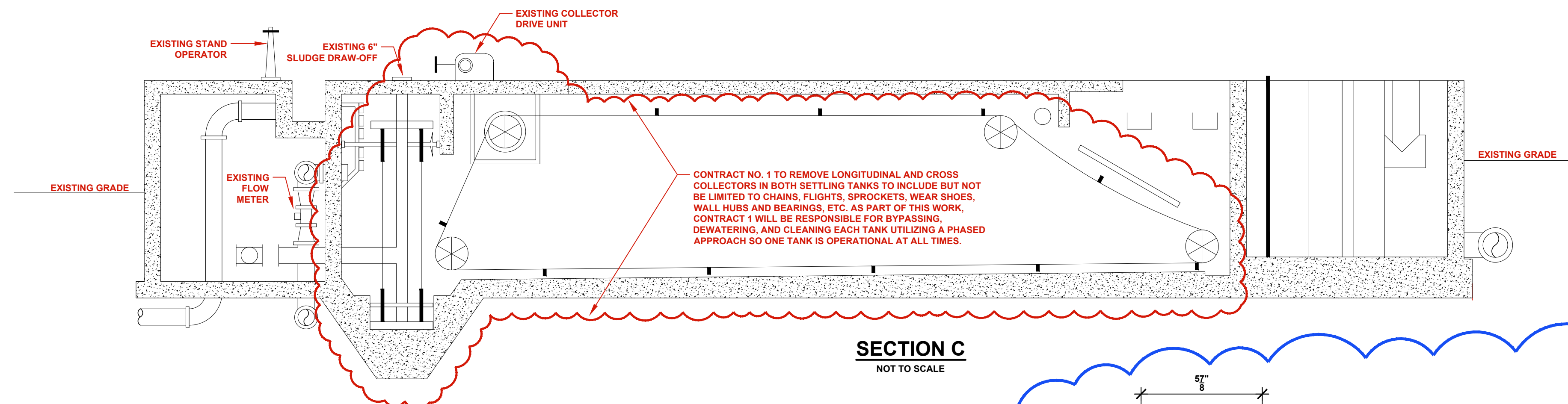
HAZARDOUS LOCATION CLASSIFICATION
SECTION A
NOT TO SCALE



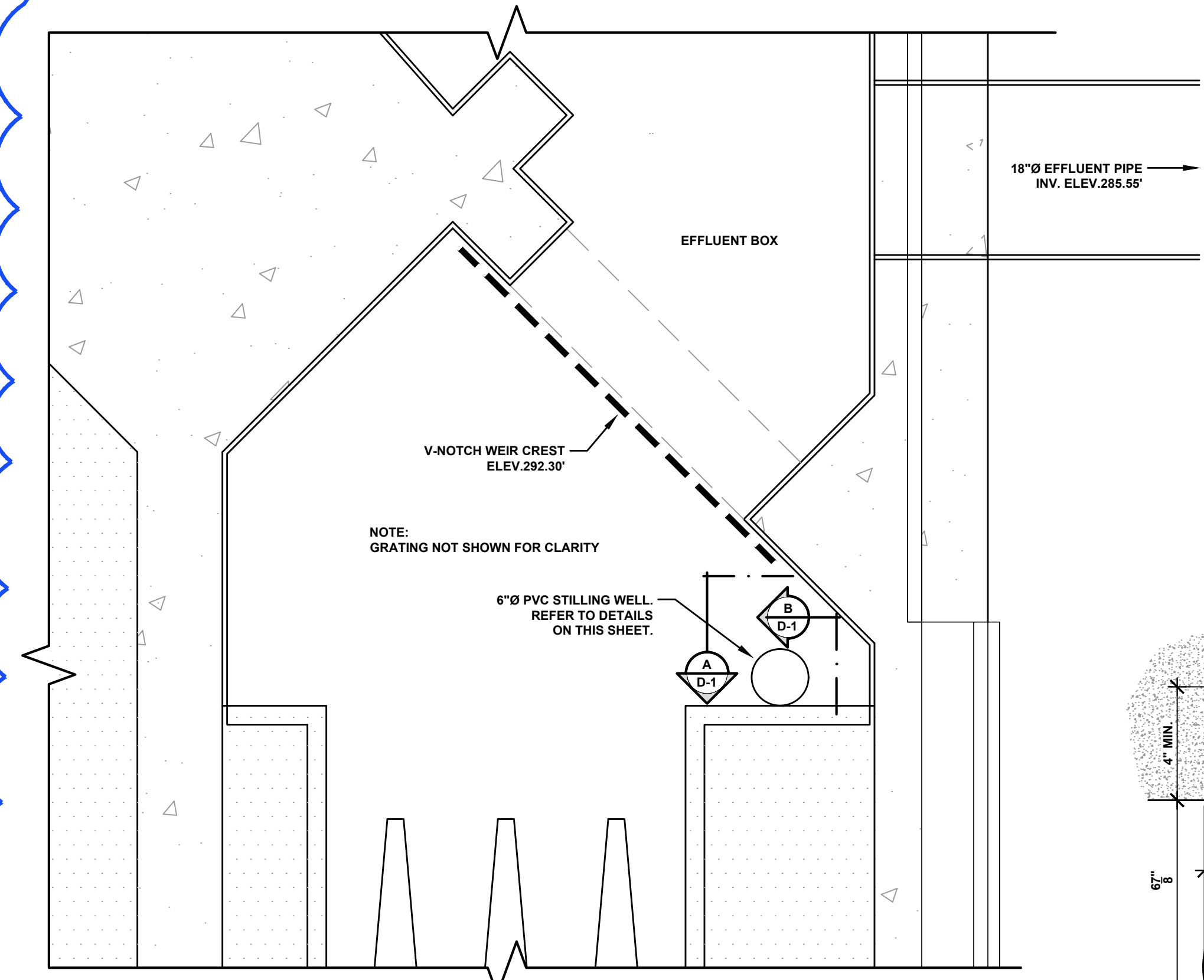
EXISTING SCUM WET PIT
SECTION B
NOT TO SCALE



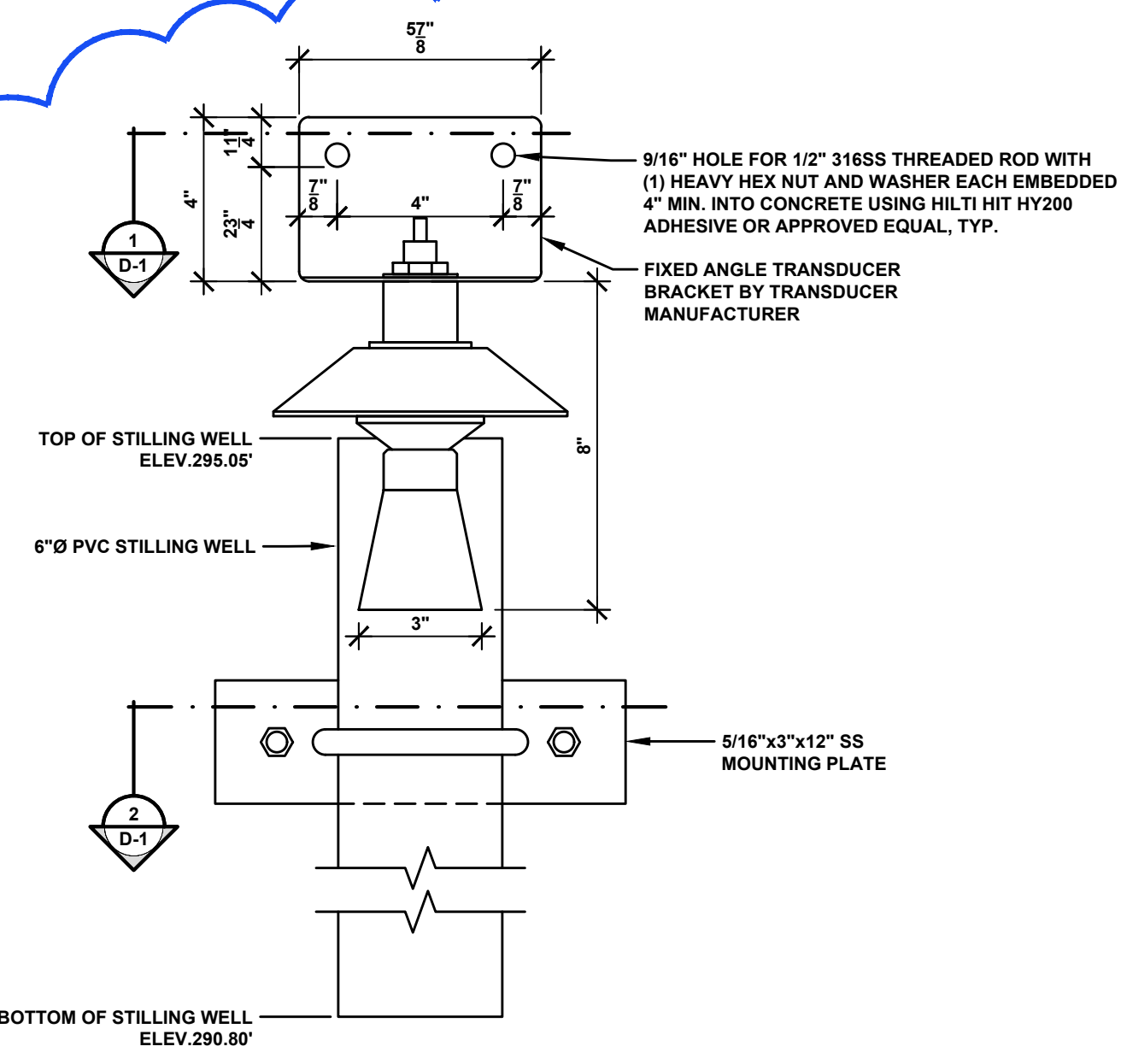
SECTION D
NOT TO SCALE



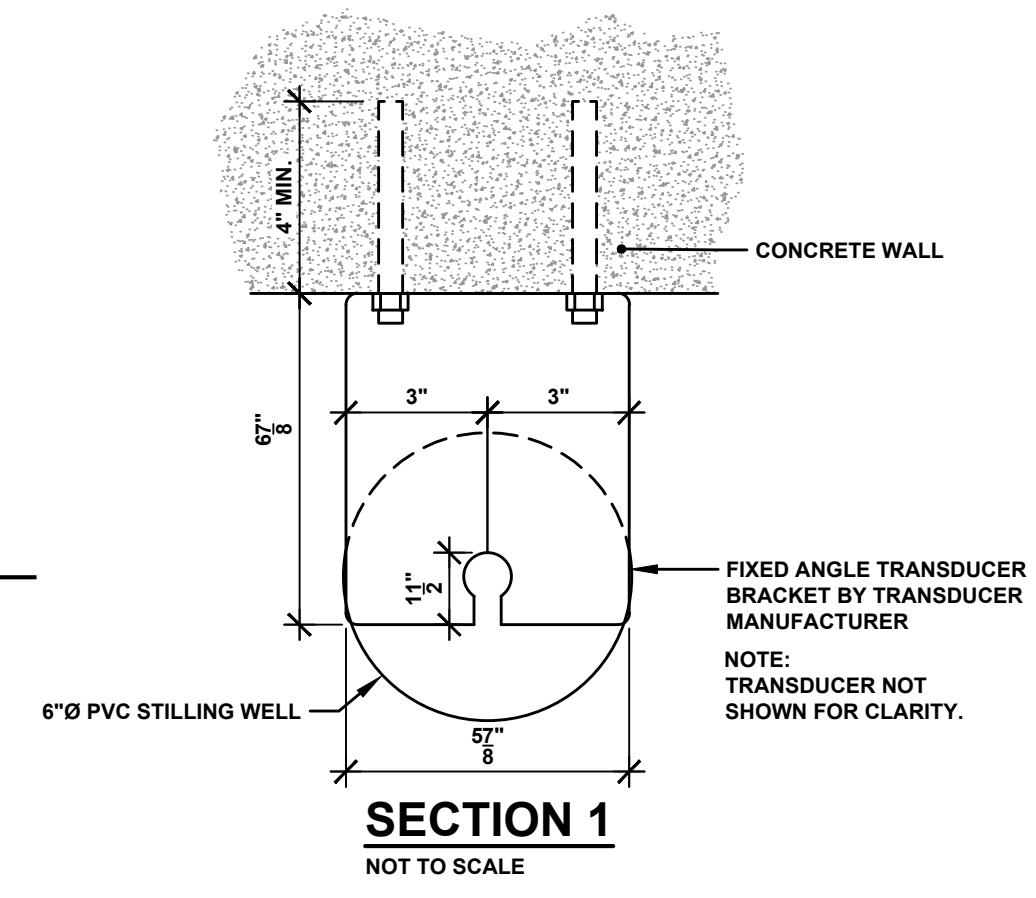
SECTION C
NOT TO SCALE



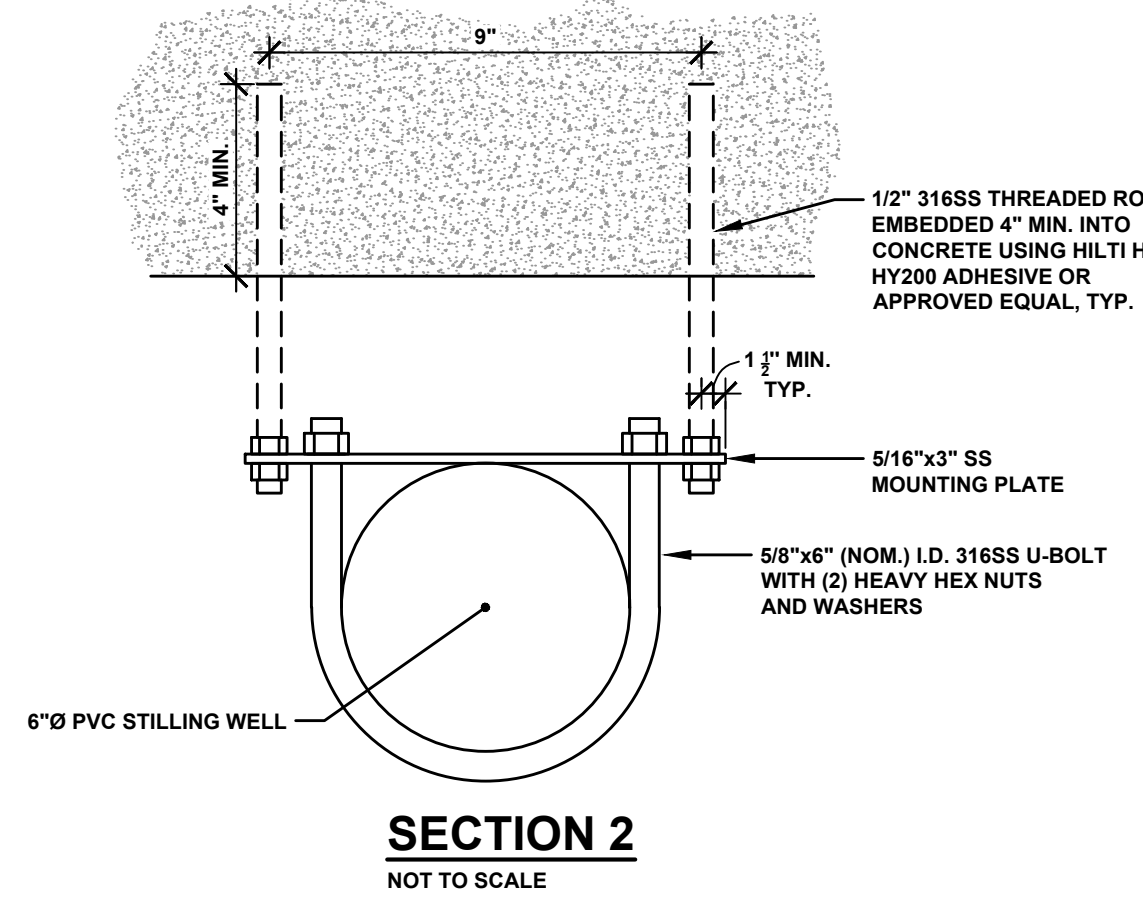
STILLING WELL PLAN
SCALE 1"=1'-0"



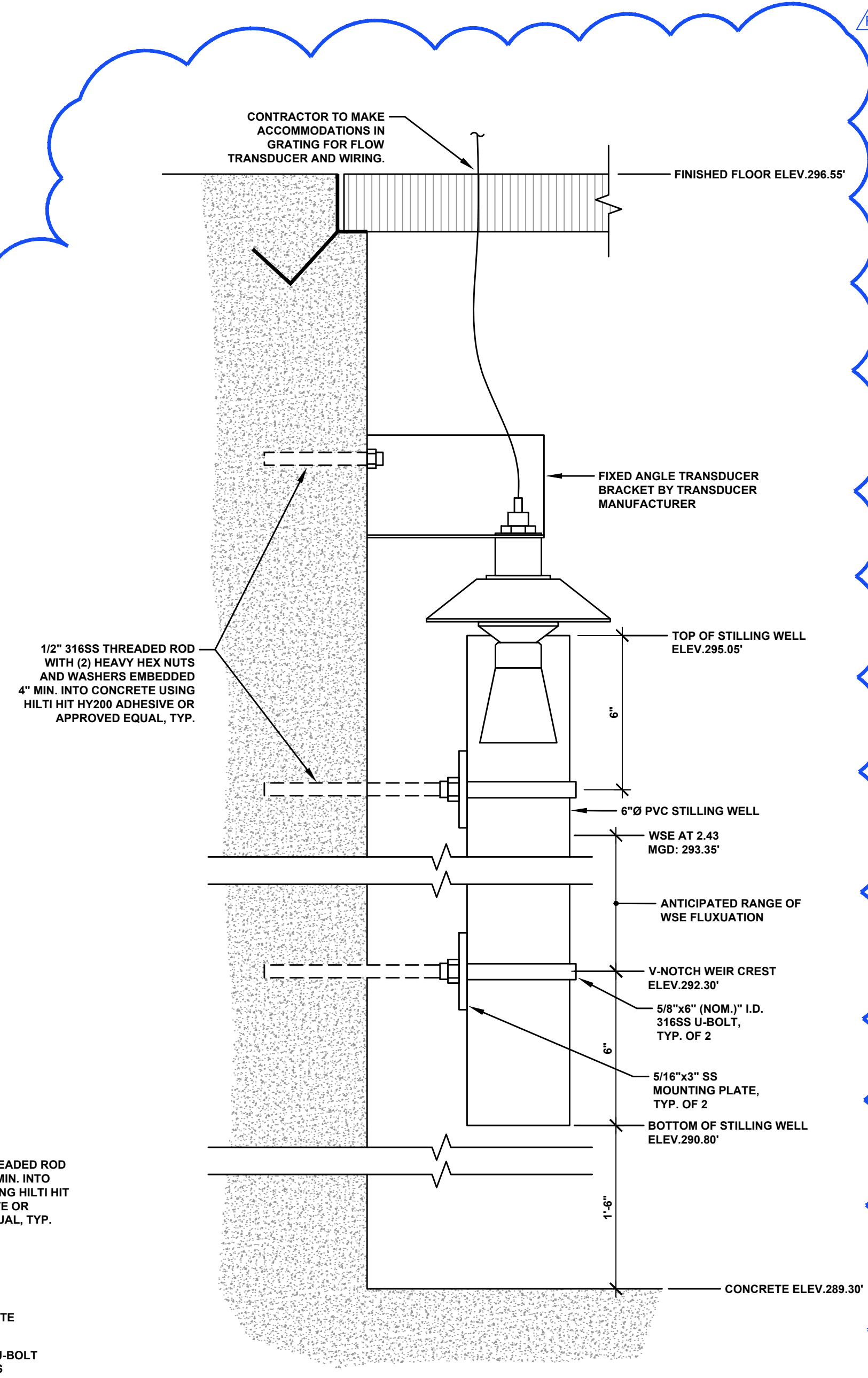
STILLING WELL - ELEVATION A
NOT TO SCALE



SECTION 1
NOT TO SCALE



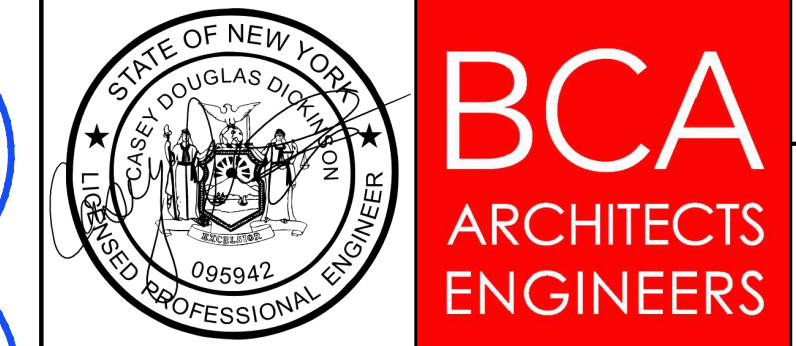
SECTION 2
NOT TO SCALE



STILLING WELL - ELEVATION B
NOT TO SCALE

KEY PLAN:

BCA Architects & Engineers
Watertown | Ithaca | Saratoga Springs | Rochester
Rochester | Troy | Binghamton
WWW.THEBCGROUP.COM



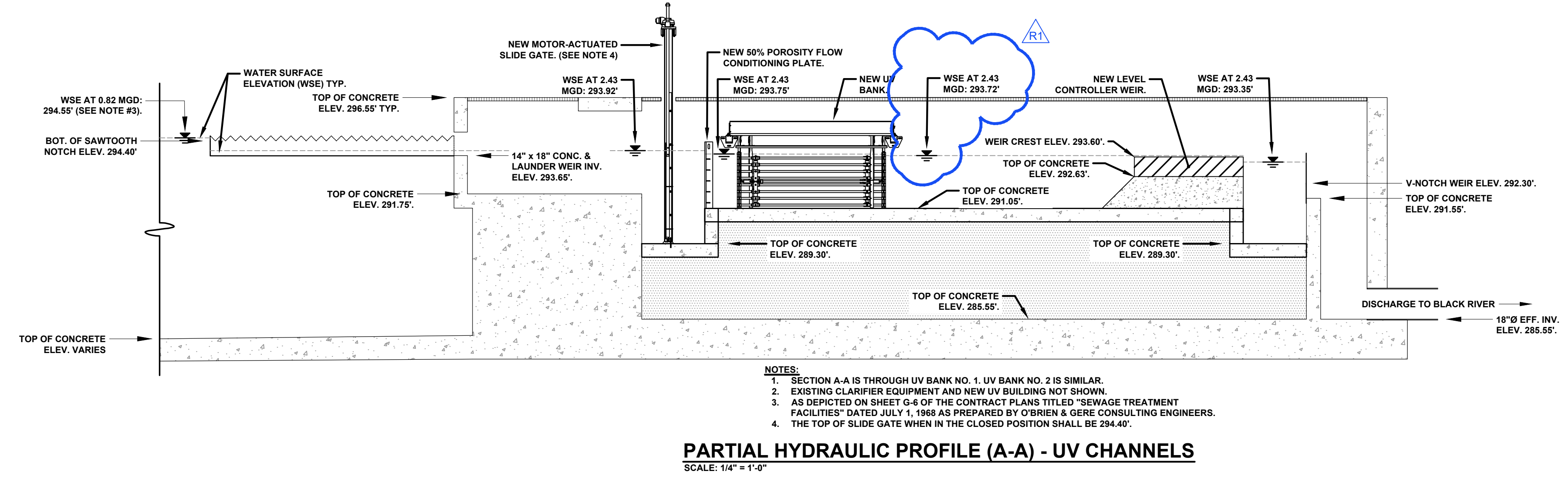
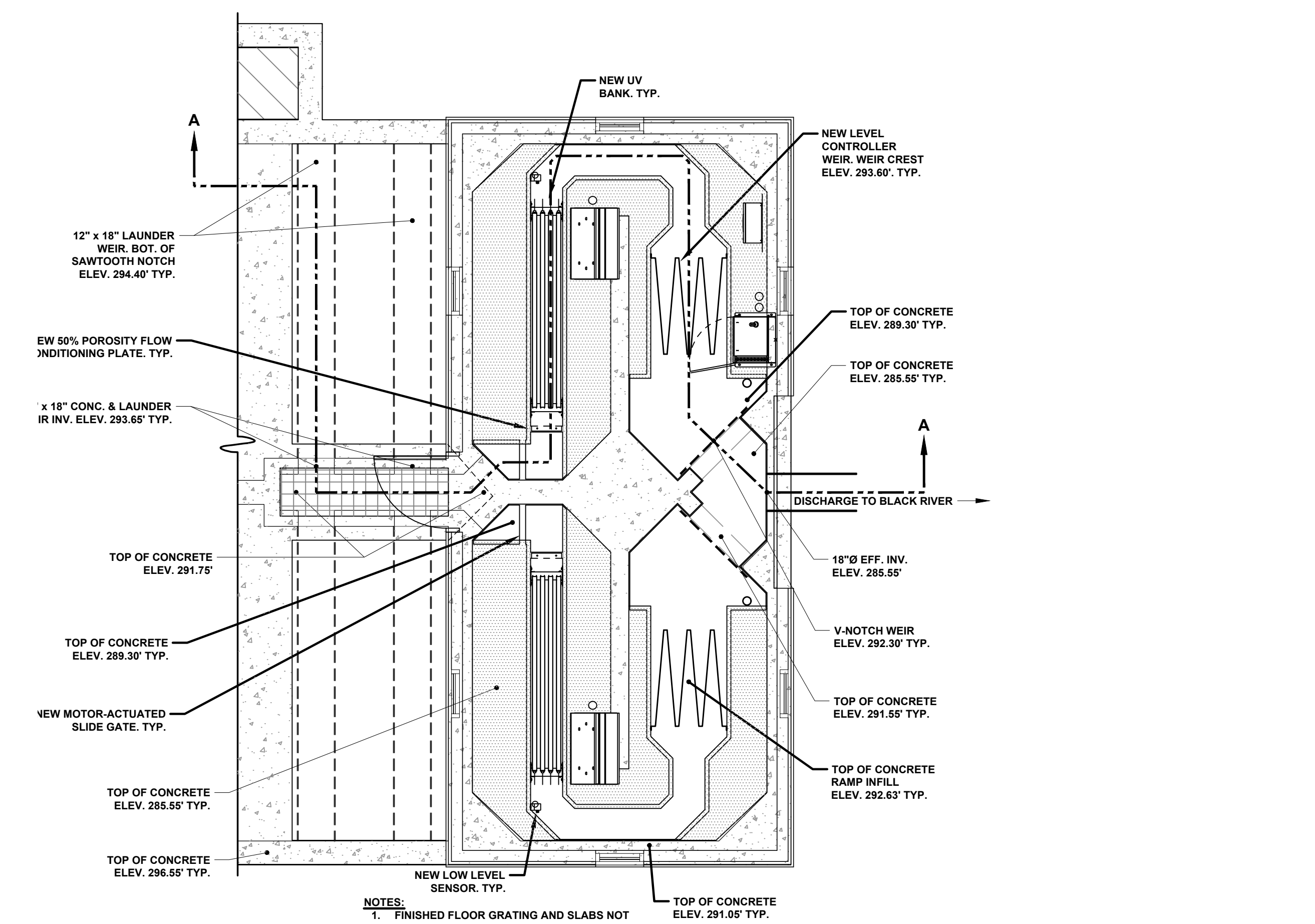
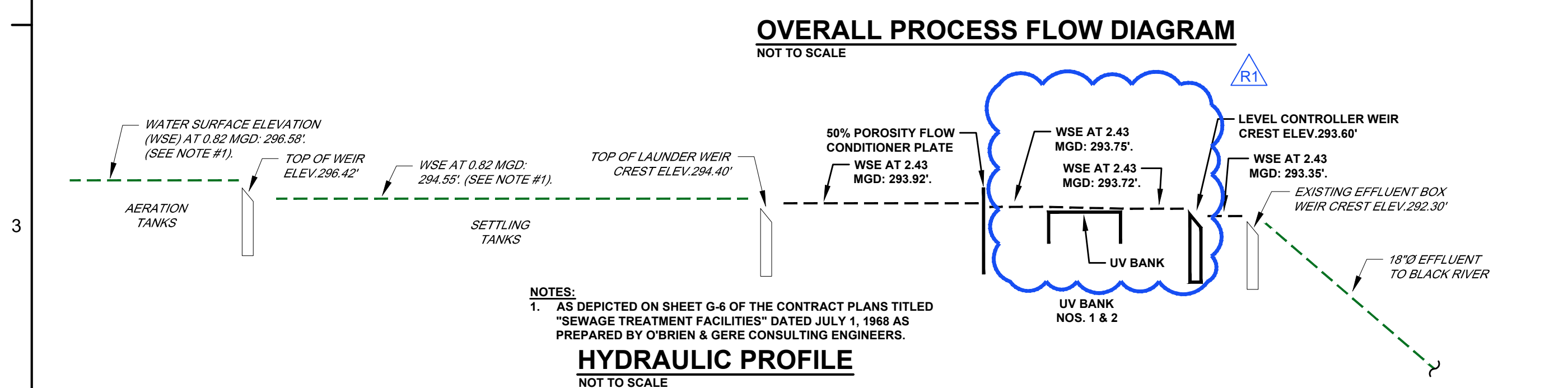
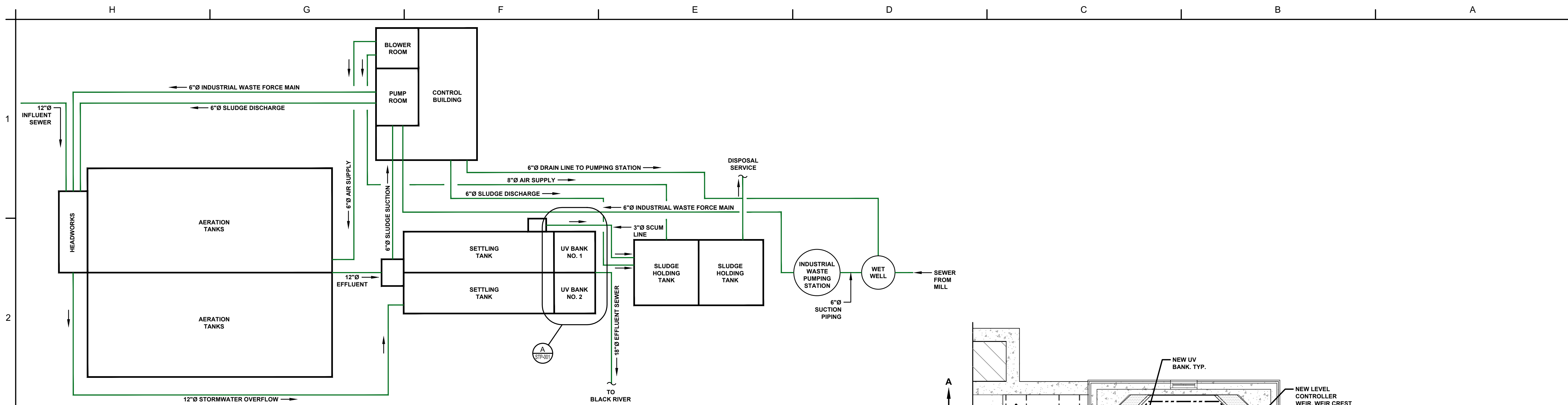
VILLAGE OF BROWNVILLE
SEWAGE EFFLUENT DISINFECTION PROJECT
WASTEWATER TREATMENT PLANT
COUNTY OF JEFFERSON

REV	DATE	DESCRIPTION

PLAN, SECTIONS AND ELEVATIONS

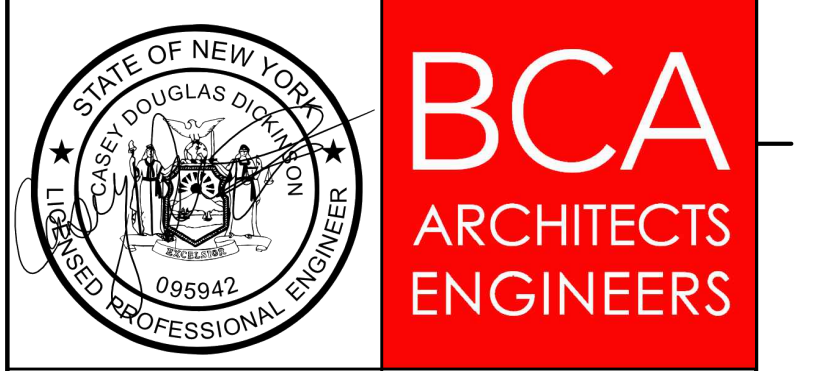
SHEET NUMBER
AD1/D-1

Pld Date: 4/22/2024 Location: P:\2024 Projects\2024-0011\09Brownville\A-Addendum Drawings\AD1-D-1.dwg



KEY PLAN:

BCA Architects & Engineers
Watertown | Ithaca | Saratoga Springs | Rochester
Rochester | Troy | Binghamton
WWW.THEBCAGROUP.COM



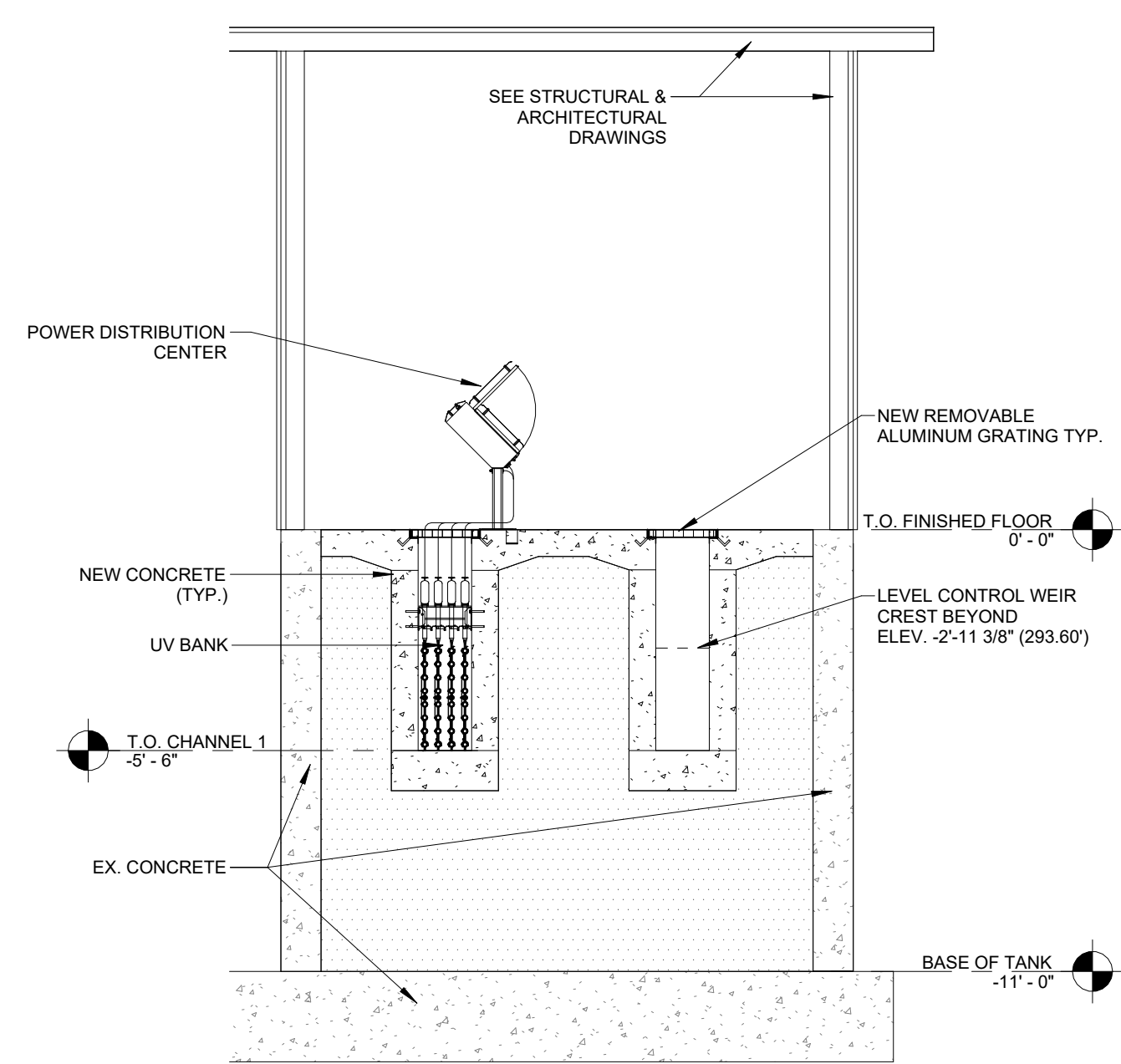
VILLAGE OF BROWNVILLE
SEWAGE EFFLUENT DISINFECTION PROJECT
WASTEWATER TREATMENT PLANT
COUNTY OF JEFFERSON

REV	DATE	DESCRIPTION

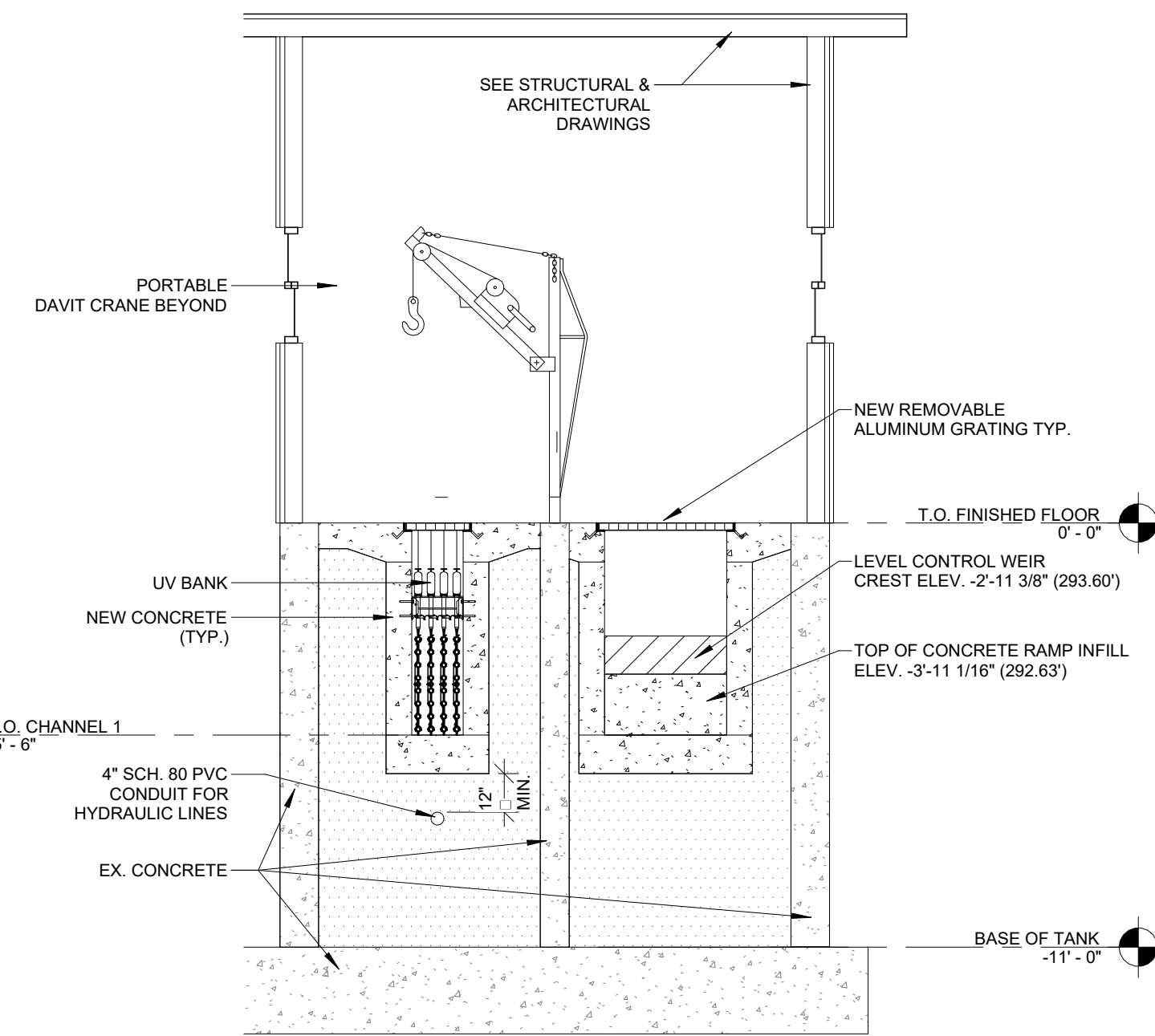
PROCESS FLOW DIAGRAM AND HYDRAULIC PROFILE

SHEET NUMBER
AD1/STP-001

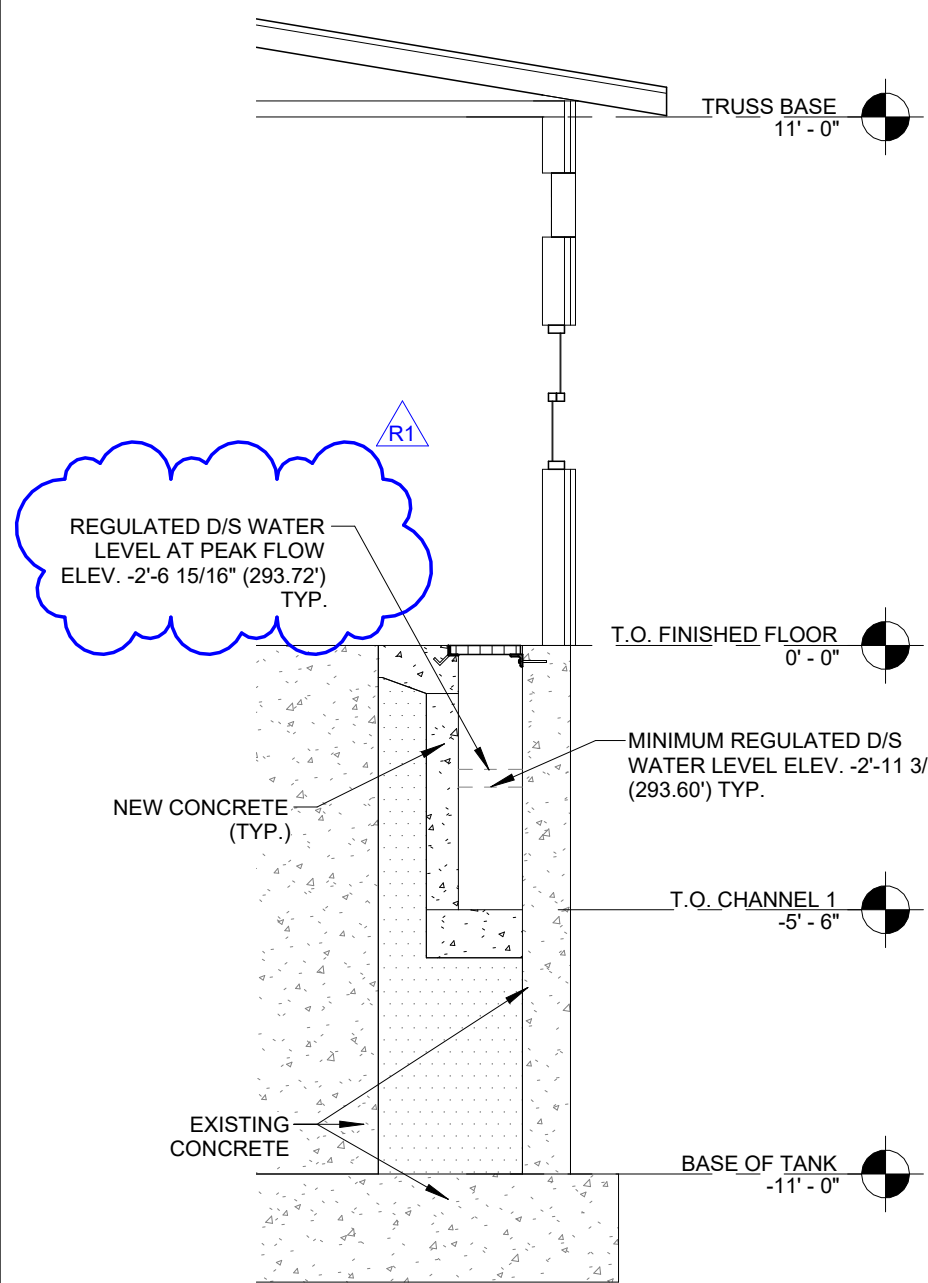
Pld Date: 4/17/2024 Location: P:\2021\proj\ad1\stp-001\09\rev\ad1-stp-001.dwg



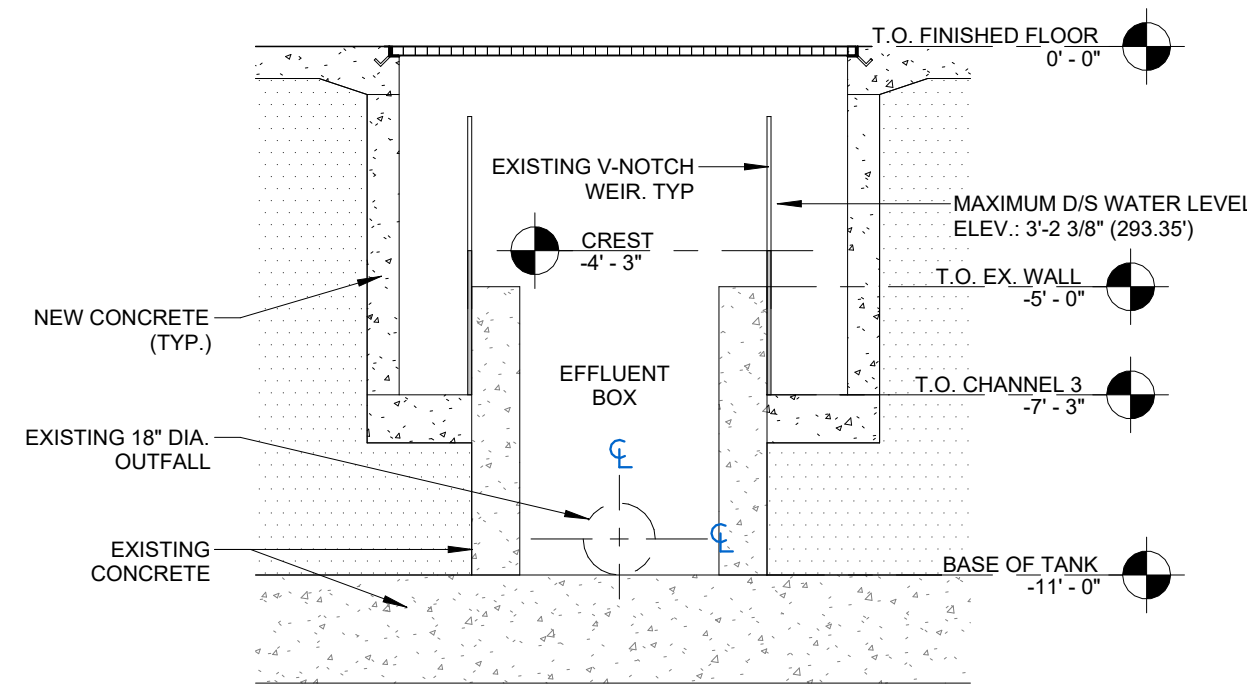
2 UV PROCESS SECTION
SCALE: 1/4" = 1'-0"



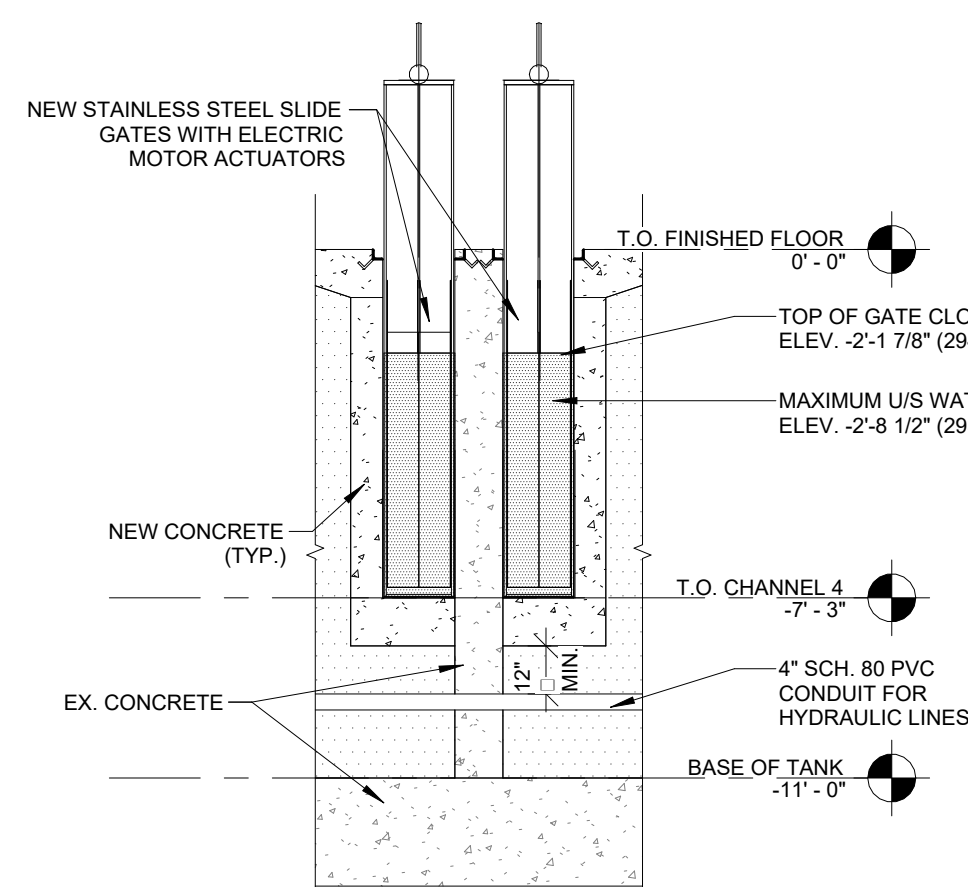
1 UV PROCESS SECTION
SCALE: 1/4" = 1'-0"



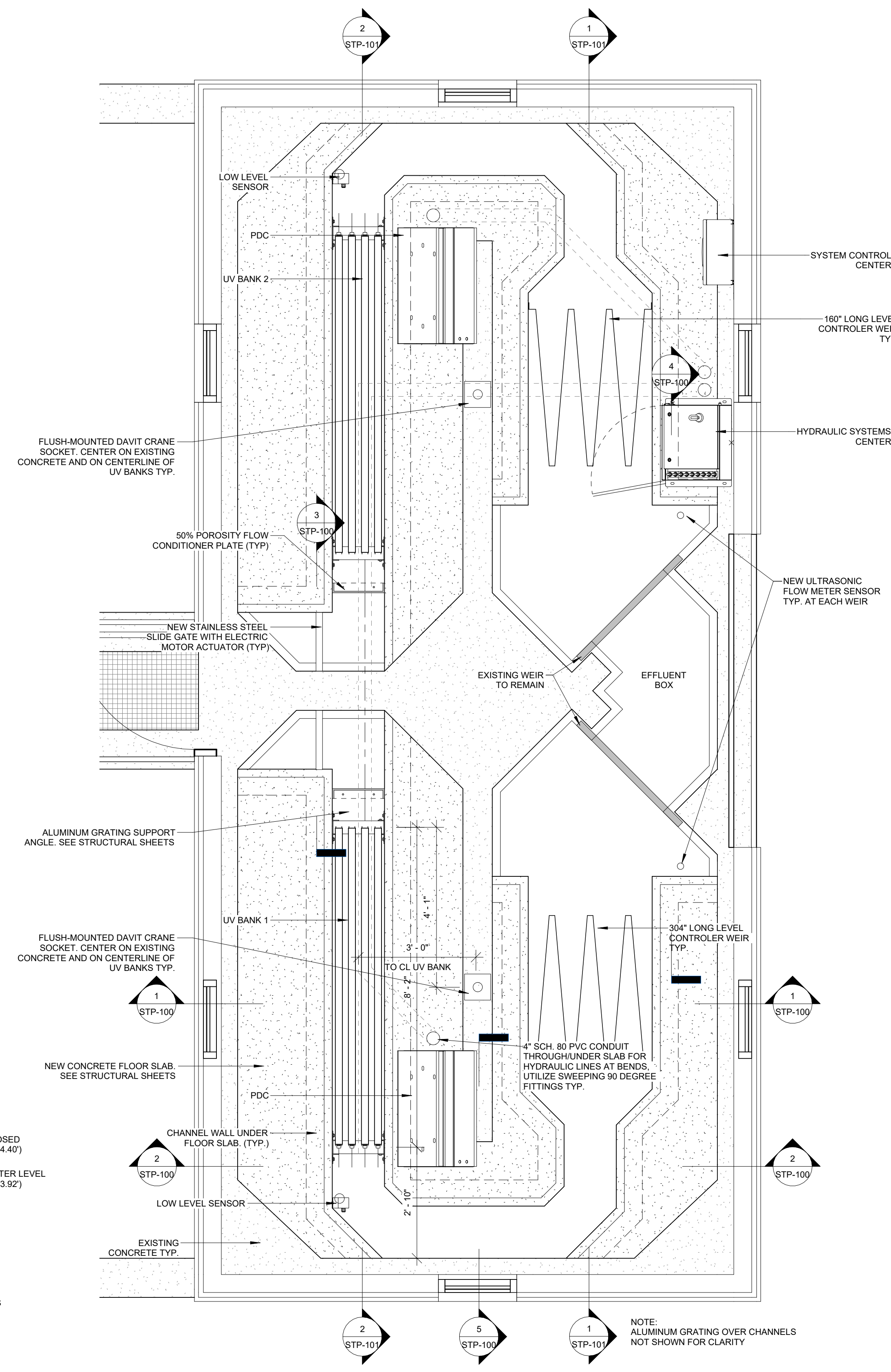
5 UV PROCESS SECTION
SCALE: 1/4" = 1'-0"



4 UV PROCESS SECTION
SCALE: 1/4" = 1'-0"



3 UV PROCESS SECTION
SCALE: 1/4" = 1'-0"

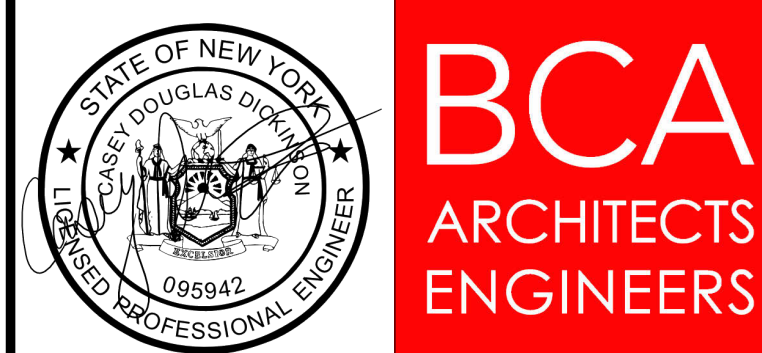


ENLARGED FLOOR PLAN
SCALE: 1/2" = 1'-0"

KEY PLAN:

COPYRIGHT © 2023 - BCA ARCHITECTS & ENGINEERS. WARNING - IT IS A VIOLATION OF THE NEW YORK STATE EDUCATION LAW FOR ANY UNAUTHORIZED ALTERATIONS TO THIS DOCUMENT AS PER ARTICLE 145 AND 147.

BCA Architects & Engineers
Watertown | Ithaca | Saratoga Springs
Rochester | Troy | Binghamton
WWW.THEBCAGROUP.COM



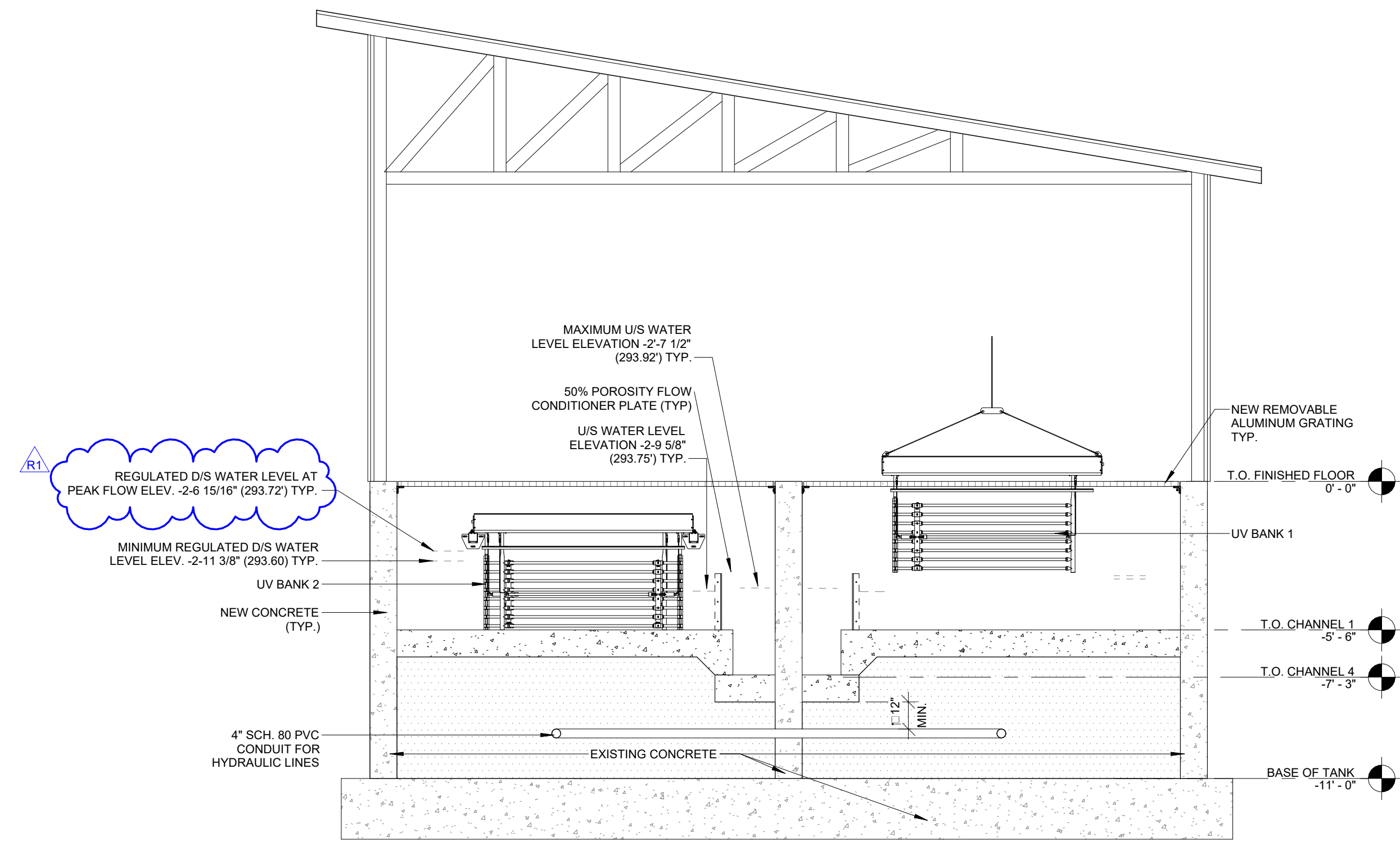
VILLAGE OF BROWNVILLE
SEWAGE EFFLUENT DISINFECTION PROJECT
WASTEWATER TREATMENT PLANT
COUNTY OF JEFFERSON

REV	DATE	DESCRIPTION
R1	04/15/2024	

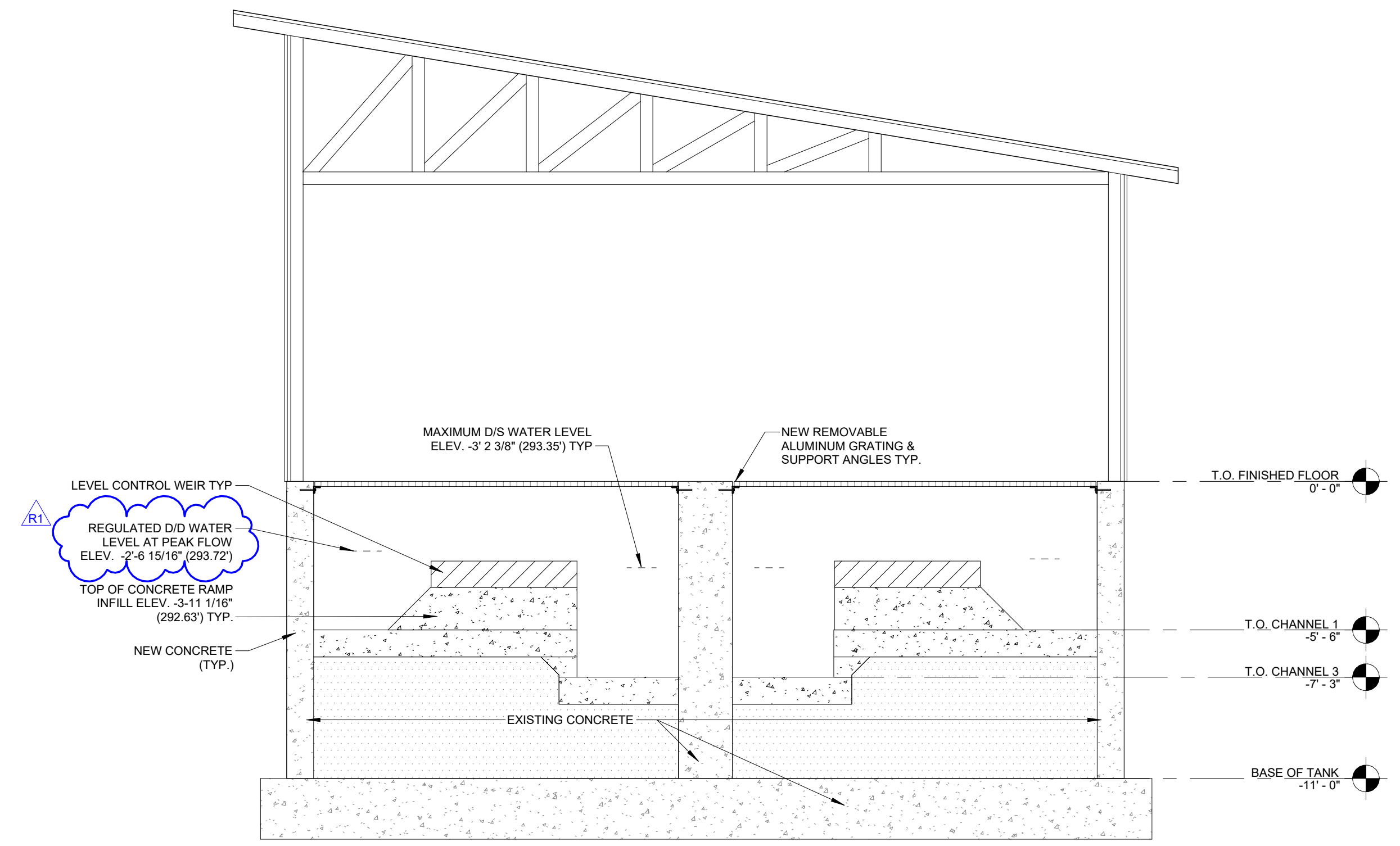
DRAWN BY NMT	PROJECT NUMBER 2021-007
CHECKED BY CDD/BMS	DATE 03/21/2024

ULTRAVIOLET DISINFECTION
TANKS NO. 1 & NO. 2

SHEET NUMBER
AD1/STP-100



2 UV PROCESS SECTION
SCALE: 1/4" = 1'-0"



1 UV PROCESS SECTION
SCALE: 1/4" = 1'-0"

KEY PLAN:

COPYRIGHT © 2023 - BCA ARCHITECTS & ENGINEERS. WARNING - IT IS A VIOLATION OF THE NEW YORK STATE EDUCATION LAW FOR ANY UNAUTHORIZED ALTERATIONS TO THIS DOCUMENT AS PER ARTICLE 145 AND 147.

BCA Architects & Engineers
Watertown | Ithaca | Saratoga Springs
Rochester | Troy | Binghamton
WWW.THEBCGROUP.COM



BCA
ARCHITECTS
ENGINEERS

VILLAGE OF BROWNVILLE
SEWAGE EFFLUENT DISINFECTION PROJECT
WASTEWATER TREATMENT PLANT
COUNTY OF JEFFERSON

REV	DATE	DESCRIPTION
R1	04/15/2024	

DRAWN BY NMT	PROJECT NUMBER 2021-007
CHECKED BY CDD/BMS	DATE 03/21/2024

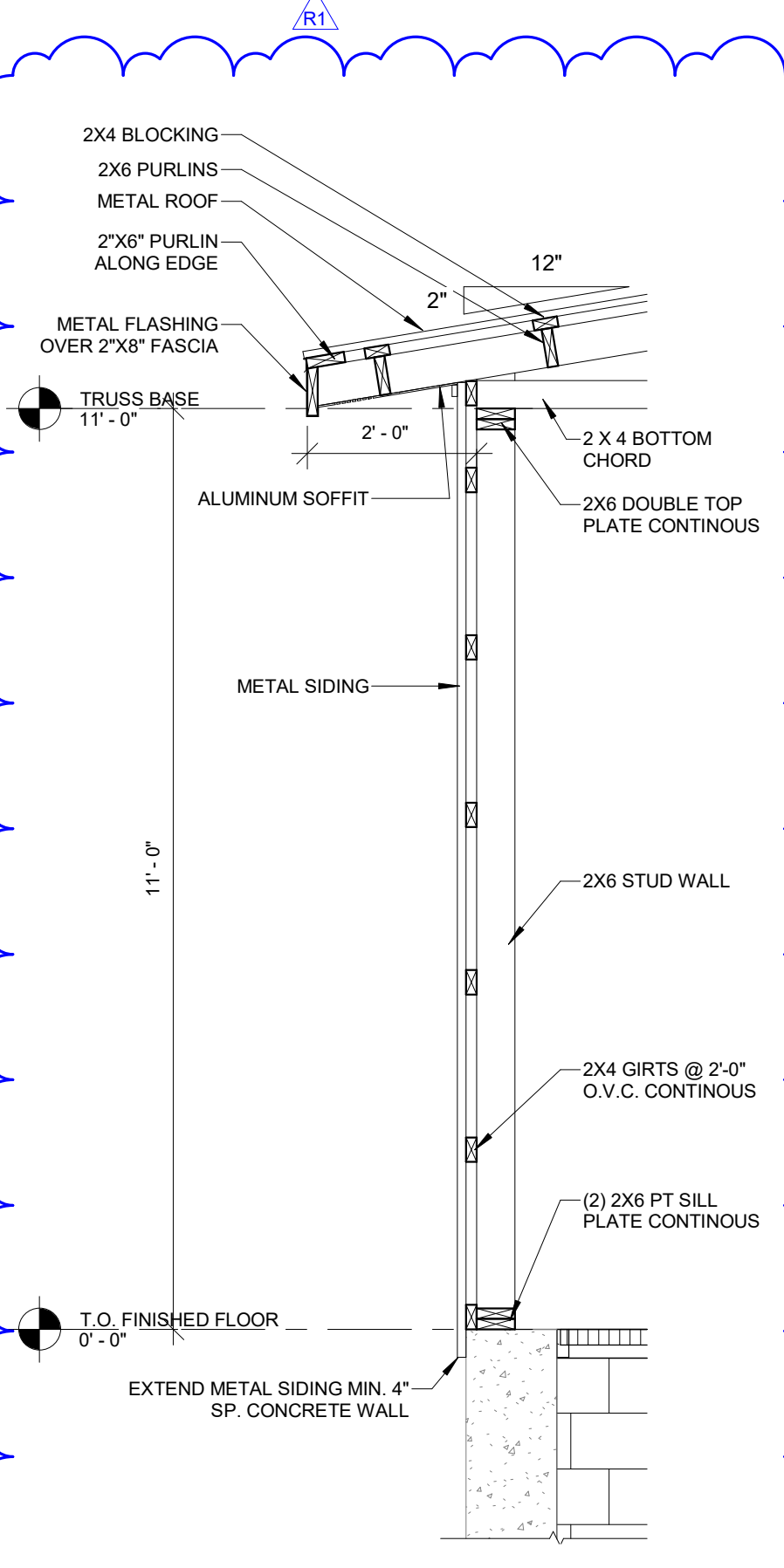
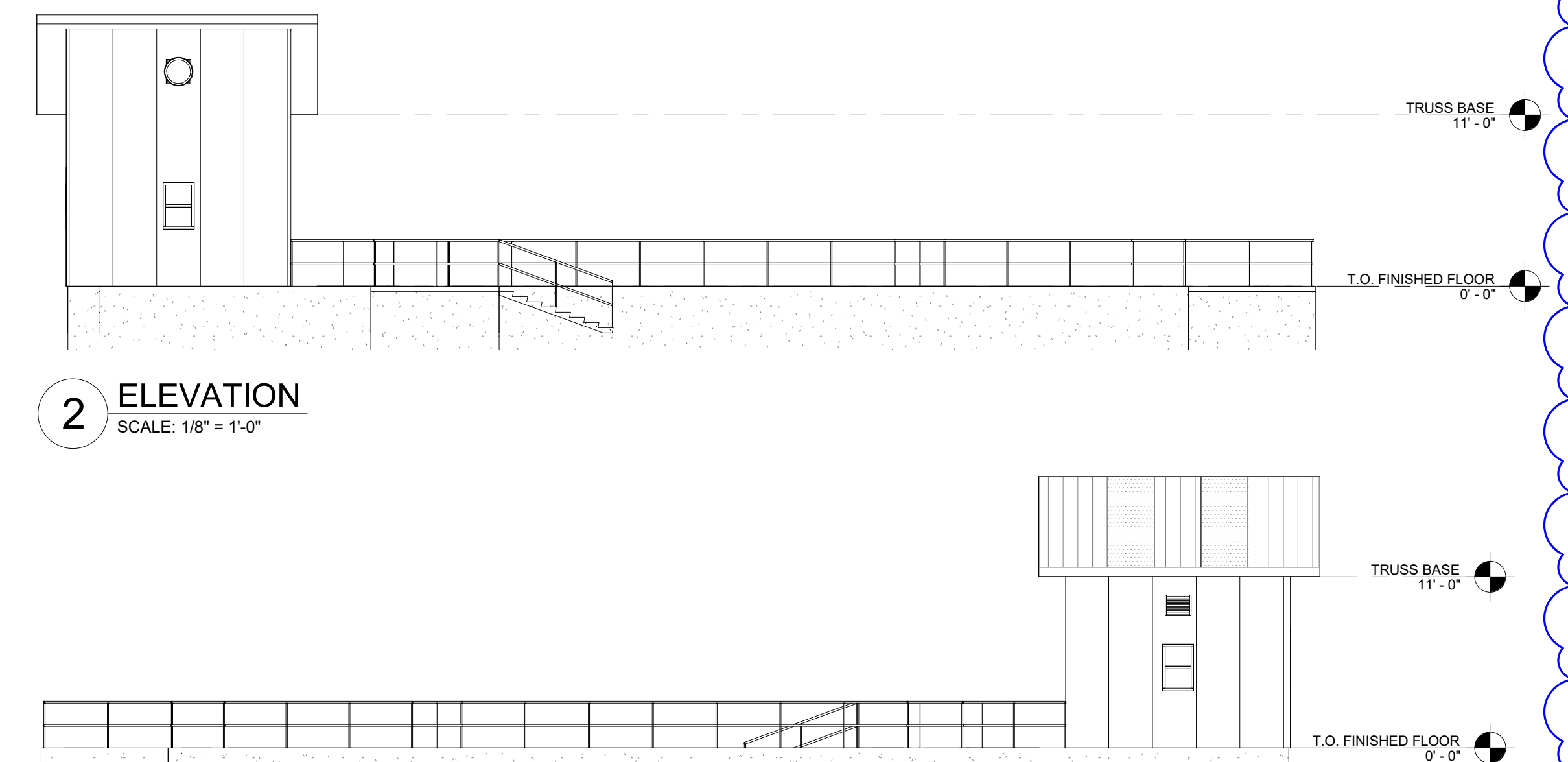
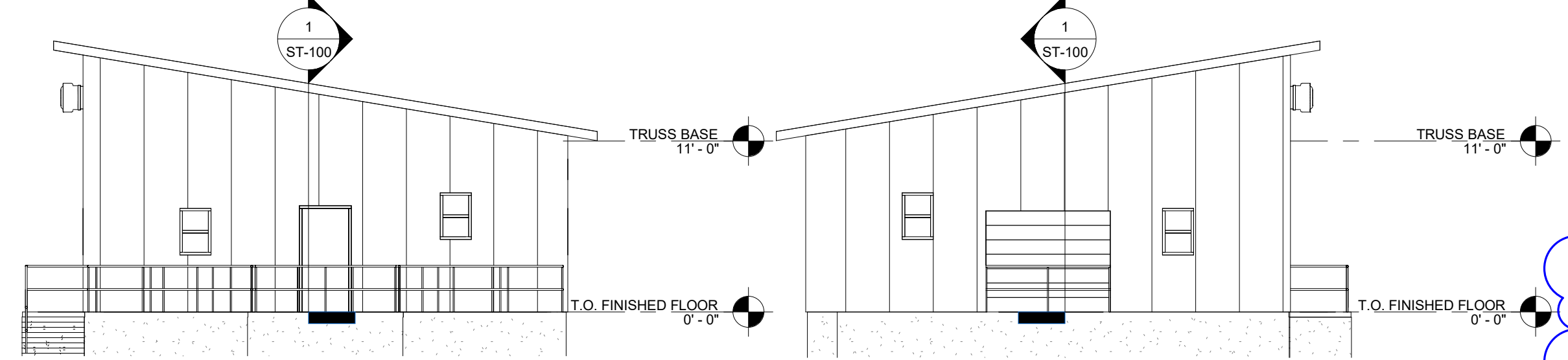
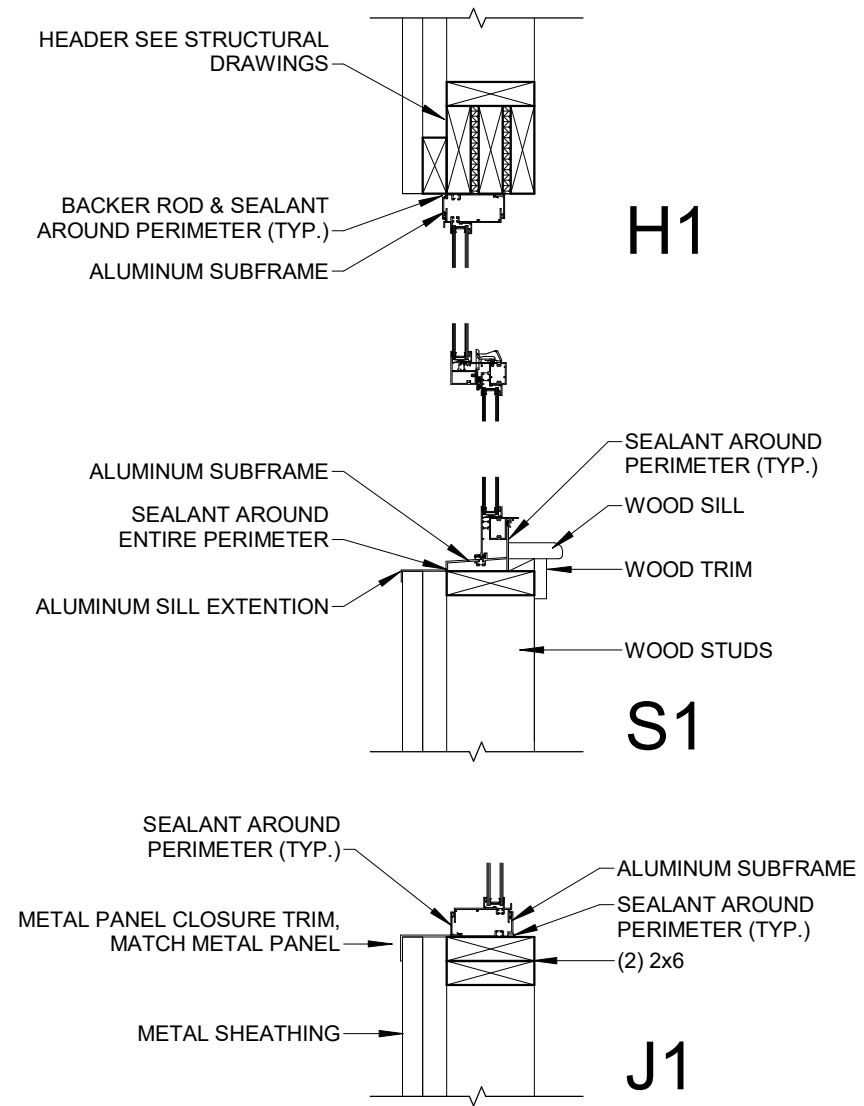
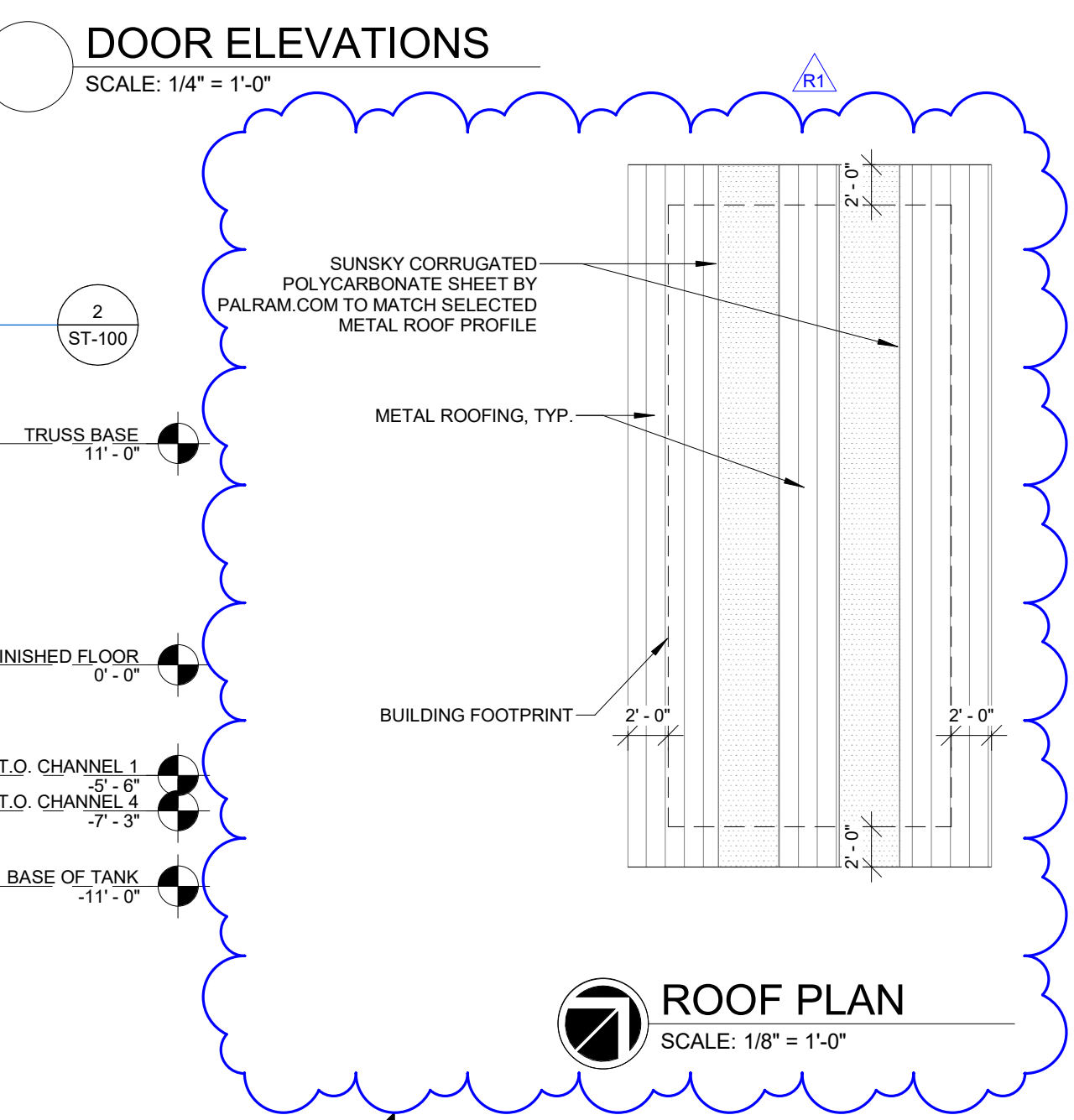
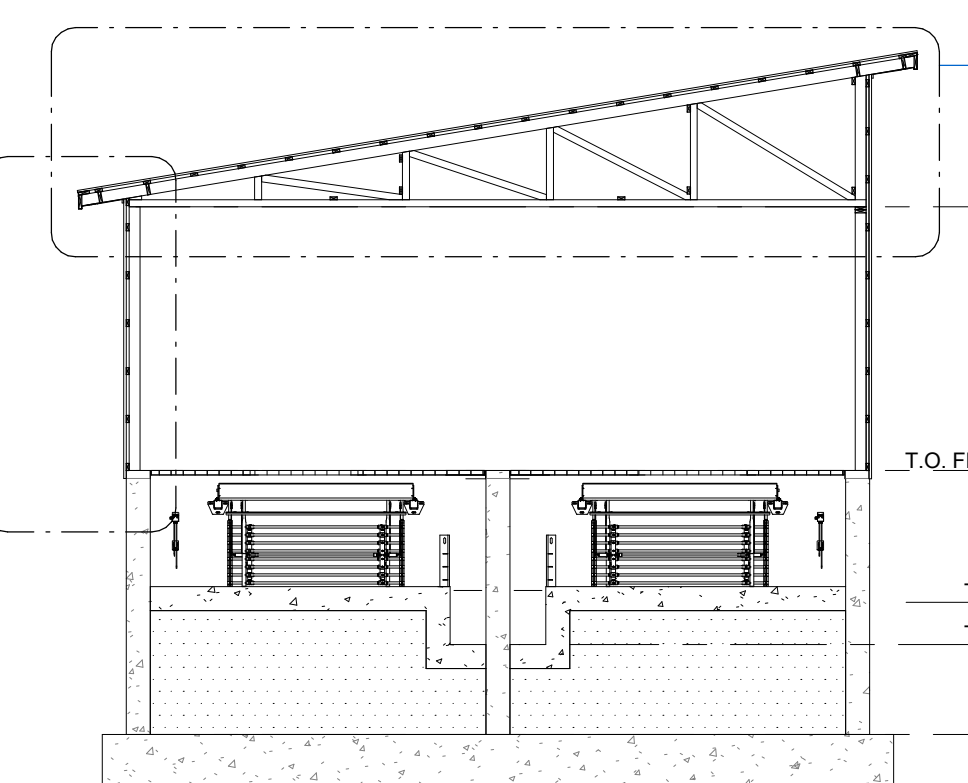
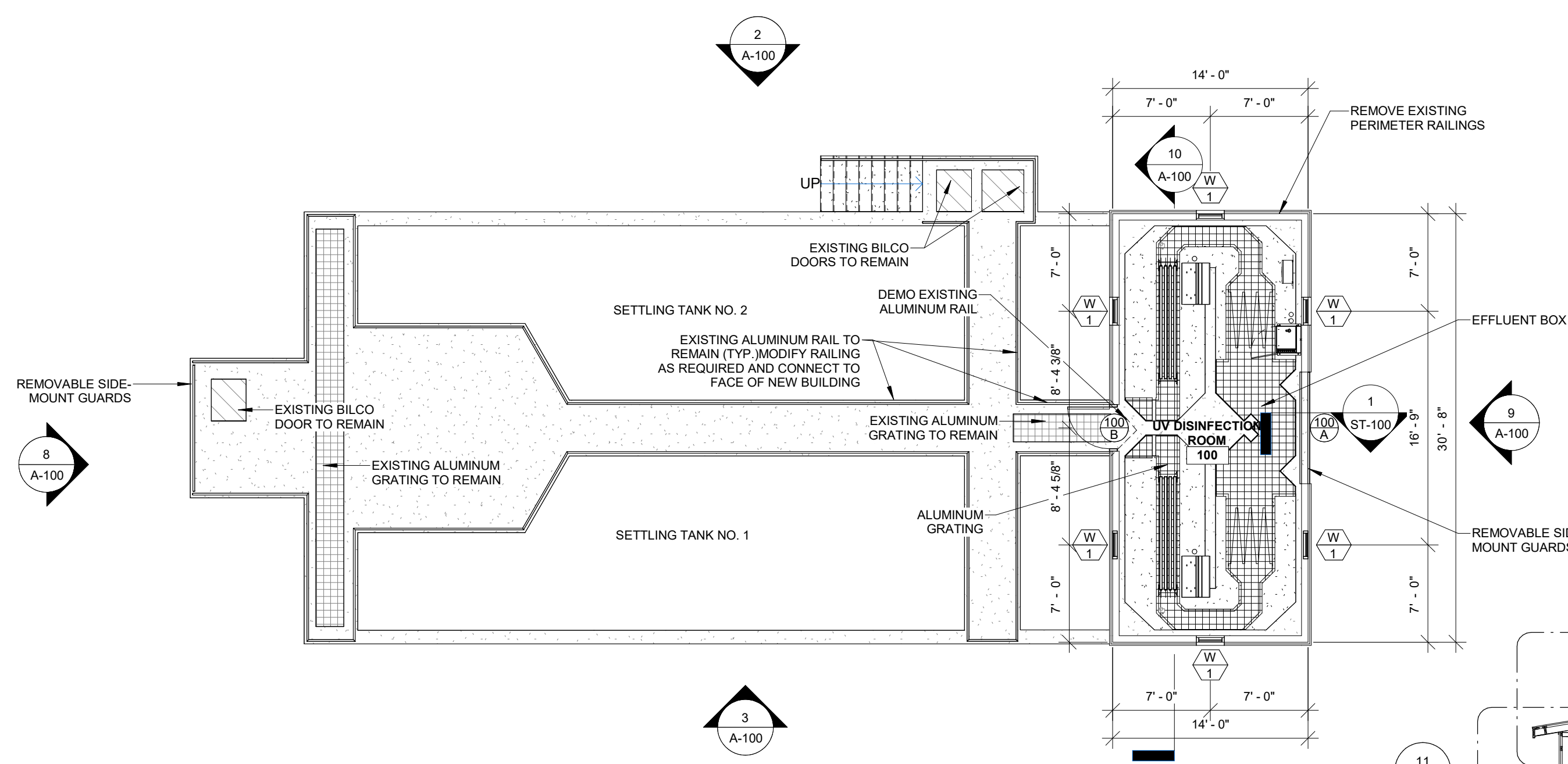
ULTRAVIOLET DISINFECTION
TANKS NO. 1 & NO. 2

SHEET NUMBER
AD1/STP-101

4/15/2024 8:55:52 AM

DOOR SCHEDULE													
DOOR No.	LETTER	WIDTH	HEIGHT	THICKNESS	ELEV.	DOOR TYPE	FINISH	ELEV.	FRAME TYPE	FINISH	DETAILS	HARDWARE	REMARKS
100	A	8' - 0"	6' - 6"	0" - 1 1/2"	OH	INSULATED FRP	MANF	-	ALUM.	CLEAR ANODIZED	MANF	MANF	
100	B	3' - 0"	6' - 8"	0" - 1 3/4"	F	INSULATED FRP	MANF	-	ALUM.	CLEAR ANODIZED	MANF	MANF	

WINDOW SCHEDULE					
MARK	WIDTH	HEIGHT	SILL HEIGHT	DESCRIPTION	REMARKS
1	2' - 0"	3' - 0"	<varies>	ALUMINUM, SINGLE HUNG	

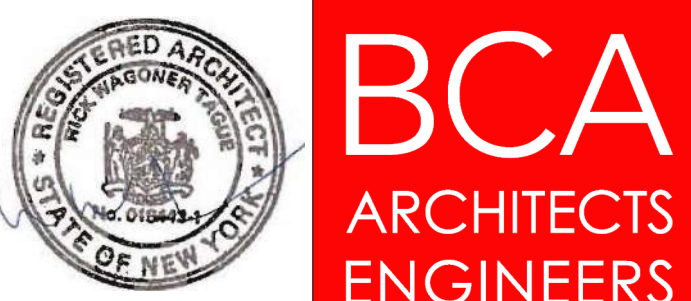


GENERAL NOTES:
1. SEE STP-100 FOR EQUIPMENT LOCATIONS AND INFORMATION

KEY PLAN:

COPYRIGHT © 2023 - BCA ARCHITECTS & ENGINEERS. WARNING - IT IS A VIOLATION OF THE NEW YORK STATE EDUCATION LAW FOR ANY UNAUTHORIZED ALTERATIONS TO THIS DOCUMENT AS PER ARTICLE 145 AND 147.

BCA Architects & Engineers
Watertown | Ithaca | Saratoga Springs
Rochester | Troy | Binghamton
WWW.THEBCAGROUP.COM



VILLAGE OF BROWNVILLE
SEWAGE EFFLUENT DISINFECTION PROJECT
WASTEWATER TREATMENT PLANT
COUNTY OF JEFFERSON

REV	DATE	DESCRIPTION
R1	04/15/2024	

DRAWN BY NMT	PROJECT NUMBER 2023-007
CHECKED BY CDD	DATE 03/21/2024

FLOOR PLANS AND ARCHITECTURAL DRAWINGS
SHEET NUMBER

AD1/A-100

4/22/2024 9:29:49 AM

Status	RFI ID	Subject	Question	Answer	Closed
Closed	PB 0001	Overhead Coiling Door	Drawing ST-100 shows a coiling service door in the framing detail, drawing A-100 is showing a sectional door on the door schedule depiction and the elevation drawing, and the specifications are calling for a coiling security grille. Can you clarify which door is required with specifications?	An insulated rolling service door is required. Please reference Addendum #1 for revised specifications.	4/23/2024
Closed	PB 0002	Stilling Well Transducer	The flow transducers read water flows at an angular cone which may interfere with the sides of the stilling well. Please advise?	Please reference Addendum #1 which specifies 6" PVC stilling well instead of a 4".	4/23/2024
Closed	PB 0003	UV Building Roof Pitch & Overhang	Please clarify the UV building roof pitch and the required overhang?	Please reference Addendum #1 for building roof pitch and required overhang.	4/23/2024
Closed	PB 0004	Spec Section 46 664 2.02 1.3	Please note Trojan has updated the 3000 Plus design. A Local Control Panel (LCP) will now be provided to power the low water level sensor. Electrical supply for the LCP will be provided by the PDC(s) and be 24 Volt DC.	Please reference Addendum #1 for modifications to the UV equipment specification.	4/23/2024
Closed	PB 0005	Spec Section 46 664 2.02 1.6	The kVA for the specified UV banks is 8.2kVA.	Please reference Addendum #1 for modifications to the UV equipment specifications.	4/23/2024
Total RFIs:					5