



Village of Sackets Harbor
Brown Shores Road Pump Station Improvements
BCA Project No. 2020-028

Addendum No. 3
January 22, 2024

This addendum is hereby made part of the Contract Documents as though it were originally included therein and must be acknowledged by the bidder in the proper place on the bid form.

Project Manual

1. Reference **FORM OF PROPOSAL, page no. 6 , "ITEM 2 TEMPORARY BY-PASS PUMPING"**:
 - a. Under **PART 2 – WORK INCLUDED, "Furnish and install power and control wiring..."REPLACE** the entire sentence with the following:

"Furnish and install power and control wiring, conduits, etc. to the temporary pumps and level controls, as required".
 - b. Under **PART 2 – WORK INCLUDED, "Provide temporary alarm dialer to notify..." REPLACE** the entire sentence with the following:

"Provide temporary automatic alarm dialer to notify contractor personnel of high water alarm or pump failure".
 - c. Under **PART 2 – WORK INCLUDED, ADD** the following:

"Contractor shall provide a redundant backup pump on-site during bypass pumping operations".

Please reference the attached Request for Information (RFI) Question and Answer Log for RFI responses to date, 1/22/2024.

Respectfully Submitted,

BCA ARCHITECTS & ENGINEERS

Brandon M. Sparacino, P.E
Associate/Civil Engineer

Status	RFI ID	Subject	Question	Answer	Closed
Closed	PB 00001	(V) Sackets Harbor Brown Shores Pump Station	1.) Please provide average daily flows and peak flows for the pump station? 2.) I do not see a temporary bypass plan, specs, and requirements for this project? 3.) Please provide location of nearest isolation valve? 4.) The new pumps shown on the "plan view" on D-1 are not available as mirror image and would revise the pump piping depicted in the plan?	1.) Please find attached flow data. 2.) The temporary bypass plan is means and methods of the contractor which shall be submitted for review and approval prior to starting work. Contractor shall provide a redundant backup pump on-site and automatic alarm dialer notifying contractor of any pumping fault errors during bypass pumping operations. Please reference Addendum No. 3 for the revised bid item descriptions for inclusion into the contract. 3.) The nearest isolation valve is a plug valve located at the Sackets Harbor wastewater treatment plant at 249 Hill Street, Sackets Harbor NY 13685. Please reference attached existing drawing indicating valve location. 4.) Pumping sections and details are diagrammatic in nature and do not show all connections, bends, fittings, etc which the contractor must provide to complete the pump station.	1/22/2024

Total RFIs: 1

WATER QUALITY DIVISION\Willage of Sackets Harbor\Sewer\Lift Stations\Brown Shores

EACH PUMP CAPACITY 200 GPM

Pump 1 Hours	1539	1544	1545
Pump 1 Hours	Pump 1 Runtime	Pump 2 Hours	Pump 2 Runtime
hrs	hrs	hrs	hrs

	Jan-23			
	Pump 1 Hours	Pump 1 Runtime	Pump 2 Hours	Pump 2 Runtime
1 Sun				
2 Mon				
3 Tue				
4 Wed	13339.55	42.94	12952.87	34.78
5 Thu				
6 Fri				
7 Sat				
8 Sun				
9 Mon				
10 Tue				
11 Wed	13377.75	38.20	12956.72	3.85
12 Thu				
13 Fri				
14 Sat				
15 Sun				
16 Mon				
17 Tue				
18 Wed	13410.84	33.09	12958.00	1.28
19 Thu				
20 Fri				
21 Sat				
22 Sun				
23 Mon				
24 Tue				
25 Wed	13446.76	35.92	12960.34	2.34
26 Thu				
27 Fri				
28 Sat				
29 Sun				
30 Mon				
31 Tue				
1 Wed	13478.01	31.25	12961.77	1.43
2 Thu				
3 Fri				
4 Sat				
5 Sun				
6 Mon				
7 Tue				

WATER QUALITY DIVISION\Willage of Sackets Harbor\Sewer\Lift Stations\Brown Shores

EACH PUMP CAPACITY 200 GPM

Pump 1 Hours	1539	1544	1545
Pump 1 Hours	Pump 1 Runtime	Pump 2 Hours	Pump 2 Runtime
hrs	hrs	hrs	hrs

		13507.81	29.80	12962.98	1.21
Feb-23	8 Wed				
	9 Thu				
	10 Fri				
	11 Sat				
	12 Sun				
	13 Mon				
	14 Tue				
	15 Wed	13558.29	50.48	12967.36	4.38
	16 Thu				
	17 Fri				
	18 Sat				
	19 Sun				
	20 Mon				
	21 Tue				
	22 Wed	13590.32	32.03	12969.69	2.33
	23 Thu				
	24 Fri				
25 Sat					
26 Sun					
27 Mon					
28 Tue					
Mar-23	1 Wed	13618.98	28.66	12970.22	.53
	2 Thu				
	3 Fri				
	4 Sat				
	5 Sun				
	6 Mon				
	7 Tue				
	8 Wed	13647.16	28.18	12971.30	1.08
	9 Thu				
	10 Fri				
	11 Sat				
	12 Sun				
	13 Mon				
	14 Tue				
	15 Wed	13674.89	27.73	12973.31	2.01
	16 Thu				
	17 Fri				

WATER QUALITY DIVISION\Willage of Sackets Harbor\Sewer\Lift Stations\Brown Shores

EACH PUMP CAPACITY 200 GPM

Pump 1 Hours	1539	1544	1545
Pump 1 Hours	Pump 1 Runtime	Pump 2 Hours	Pump 2 Runtime
hrs	hrs	hrs	hrs

	18 Sat			
	19 Sun			
	20 Mon			
	21 Tue			
	22 Wed	13719.39	44.50	12976.11 2.80
	23 Thu			
	24 Fri			
	25 Sat			
	26 Sun			
	27 Mon			
	28 Tue			
	29 Wed	13758.25	38.86	12978.32 2.21
	30 Thu			
	31 Fri			
Apr-23	1 Sat			
	2 Sun			
	3 Mon			
	4 Tue			
	5 Wed	13793.53	35.28	12979.28 .96
	6 Thu			
	7 Fri			
	8 Sat			
	9 Sun			
	10 Mon			
	11 Tue			
	12 Wed	13834.21	40.68	12982.22 2.94
	13 Thu			
	14 Fri			
	15 Sat			
	16 Sun			
17 Mon				
18 Tue				
19 Wed	13864.79	30.58	12990.31 8.09	
	20 Thu			
	21 Fri			
	22 Sat			
	23 Sun			
	24 Mon			

WATER QUALITY DIVISION\Willage of Sackets Harbor\Sewer\Lift Stations\Brown Shores

EACH PUMP CAPACITY 200 GPM

Pump 1 Hours	1539	1544	1545
Pump 1 Hours	Pump 1 Runtime	Pump 2 Hours	Pump 2 Runtime
hrs	hrs	hrs	hrs

	25 Tue				
	26 Wed	13895.55	30.76	12994.87	4.56
	27 Thu				
	28 Fri				
	29 Sat				
	30 Sun				
May-23	1 Mon				
	2 Tue				
	3 Wed	13932.35	36.80	12999.48	4.61
	4 Thu				
	5 Fri				
	6 Sat				
	7 Sun				
	8 Mon				
	9 Tue				
	10 Wed	13970.36	38.01	13005.65	6.17
	11 Thu				
	12 Fri				
	13 Sat				
	14 Sun				
	15 Mon				
	16 Tue				
	17 Wed	14005.40	35.04	13009.80	4.15
	18 Thu				
	19 Fri				
	20 Sat				
	21 Sun				
	22 Mon				
	23 Tue				
	24 Wed	14037.58	32.18	13015.09	5.29
	25 Thu				
	26 Fri				
	27 Sat				
	28 Sun				
	29 Mon				
	30 Tue				
31 Wed	14067.27	29.69	13021.78	6.69	
	1 Thu				

WATER QUALITY DIVISION\Willage of Sackets Harbor\Sewer\Lift Stations\Brown Shores

EACH PUMP CAPACITY 200 GPM

Pump 1 Hours	1539	1544	1545
Pump 1 Hours hrs	Pump 1 Runtime hrs	Pump 2 Hours hrs	Pump 2 Runtime hrs

Jun-23	2 Fri				
	3 Sat				
	4 Sun				
	5 Mon				
	6 Tue				
	7 Wed	14089.30	22.03	13037.20	15.42
	8 Thu				
	9 Fri				
	10 Sat				
	11 Sun				
	12 Mon				
	13 Tue				
	14 Wed	14113.40	24.10	13043.10	5.90
	15 Thu				
	16 Fri				
	17 Sat				
	18 Sun				
	19 Mon				
	20 Tue				
	21 Wed	14135.62	22.22	13058.54	15.44
	22 Thu				
	23 Fri				
	24 Sat				
	25 Sun				
	26 Mon				
	27 Tue				
	28 Wed	14157.61	21.99	13081.00	22.46
	29 Thu				
	30 Fri				
	1 Sat				
2 Sun					
3 Mon					
4 Tue					
5 Wed	14179.19	21.58	13103.19	22.19	
6 Thu					
7 Fri					
8 Sat					
9 Sun					

WATER QUALITY DIVISION\Willage of Sackets Harbor\Sewer\Lift Stations\Brown Shores

EACH PUMP CAPACITY 200 GPM

Pump 1 Hours	1539	1544	1545
Pump 1 Hours	Pump 1 Runtime	Pump 2 Hours	Pump 2 Runtime
hrs	hrs	hrs	hrs

		EACH PUMP CAPACITY 200 GPM			
		Pump 1 Hours	Pump 1 Runtime	Pump 2 Hours	Pump 2 Runtime
		hrs	hrs	hrs	hrs
Jul-23	10 Mon				
	11 Tue				
	12 Wed	14202.70	23.51	13127.20	24.01
	13 Thu				
	14 Fri				
	15 Sat				
	16 Sun				
	17 Mon				
	18 Tue				
	19 Wed	14224.60	21.90	13149.55	22.35
	20 Thu				
	21 Fri				
	22 Sat				
	23 Sun				
	24 Mon				
	25 Tue				
	26 Wed	14242.01	17.41	13167.43	17.88
27 Thu					
28 Fri					
29 Sat					
30 Sun					
31 Mon					
Aug-23	1 Tue				
	2 Wed	14265.88	23.87	13192.12	24.69
	3 Thu				
	4 Fri				
	5 Sat				
	6 Sun				
	7 Mon				
	8 Tue				
	9 Wed	14287.02	21.14	13213.73	21.61
	10 Thu				
	11 Fri				
	12 Sat				
	13 Sun				
	14 Mon				
	15 Tue				
	16 Wed	14310.25	23.23	13237.81	24.08

WATER QUALITY DIVISION\Willage of Sackets Harbor\Sewer\Lift Stations\Brown Shores

EACH PUMP CAPACITY 200 GPM

Pump 1 Hours	1539	1544	1545
Pump 1 Hours	Pump 1 Runtime	Pump 2 Hours	Pump 2 Runtime
hrs	hrs	hrs	hrs

	17 Thu			
	18 Fri			
	19 Sat			
	20 Sun			
	21 Mon			
	22 Tue			
	23 Wed	14335.55	25.30	13263.63
	24 Thu			
	25 Fri			
	26 Sat			
	27 Sun			
	28 Mon			
	29 Tue			
	30 Wed	14358.46	22.91	13287.33
	31 Thu			
Sep-23	1 Fri			
	2 Sat			
	3 Sun			
	4 Mon			
	5 Tue			
	6 Wed	14378.54	20.08	13307.63
	7 Thu			
	8 Fri			
	9 Sat			
	10 Sun			
	11 Mon			
	12 Tue			
	13 Wed	14393.40	14.86	13322.62
	14 Thu			
15 Fri				
16 Sat				
17 Sun				
18 Mon				
19 Tue				
20 Wed	14403.40	10.00	13335.95	
21 Thu				
22 Fri				
23 Sat				

WATER QUALITY DIVISION\Willage of Sackets Harbor\Sewer\Lift Stations\Brown Shores

EACH PUMP CAPACITY 200 GPM

Pump 1 Hours	1539	1544	1545
Pump 1 Hours	Pump 1 Runtime	Pump 2 Hours	Pump 2 Runtime
hrs	hrs	hrs	hrs

	24 Sun				
	25 Mon				
	26 Tue				
	27 Wed	14418.21	14.81	13347.75	11.80
	28 Thu				
	29 Fri				
	30 Sat				
Oct-23	1 Sun				
	2 Mon				
	3 Tue				
	4 Wed	14427.73	9.52	13357.31	9.56
	5 Thu				
	6 Fri				
	7 Sat				
	8 Sun				
	9 Mon				
	10 Tue				
	11 Wed	14436.71	8.98	13366.25	8.94
	12 Thu				
	13 Fri				
	14 Sat				
	15 Sun				
	16 Mon				
	17 Tue				
	18 Wed	14444.11	7.40	13373.96	7.71
	19 Thu				
	20 Fri				
	21 Sat				
	22 Sun				
	23 Mon				
	24 Tue				
	25 Wed	14450.58	6.47	13380.50	6.54
	26 Thu				
	27 Fri				
	28 Sat				
	29 Sun				
	30 Mon				
	31 Tue	14456.46	5.88	13386.05	5.55

WATER QUALITY DIVISION\Willage of Sackets Harbor\Sewer\Lift Stations\Brown Shores

EACH PUMP CAPACITY 200 GPM

Pump 1 Hours	1539	1544	1545
Pump 1 Hours	Pump 1 Runtime	Pump 2 Hours	Pump 2 Runtime
hrs	hrs	hrs	hrs

Date	Pump 1 Hours	Pump 1 Runtime	Pump 2 Hours	Pump 2 Runtime
	hrs	hrs	hrs	hrs
1 Wed				
2 Thu				
3 Fri				
4 Sat				
5 Sun				
6 Mon				
7 Tue				
8 Wed	14474.57	18.11	13402.45	16.40
9 Thu				
10 Fri				
11 Sat				
12 Sun				
13 Mon				
14 Tue				
15 Wed				
16 Thu	14490.22	15.65	13410.64	8.19
17 Fri				
18 Sat				
19 Sun				
20 Mon				
21 Tue				
22 Wed	14508.69	18.47	13415.72	5.08
23 Thu				
24 Fri				
25 Sat				
26 Sun				
27 Mon				
28 Tue	14532.75	24.06	13420.16	4.44
29 Wed				
30 Thu				
1 Fri				
2 Sat				
3 Sun				
4 Mon				
5 Tue				
6 Wed	14562.51	29.76	13421.00	.84
7 Thu				
8 Fri				

WATER QUALITY DIVISION\Willage of Sackets Harbor\Sewer\Lift Stations\Brown Shores

EACH PUMP CAPACITY 200 GPM

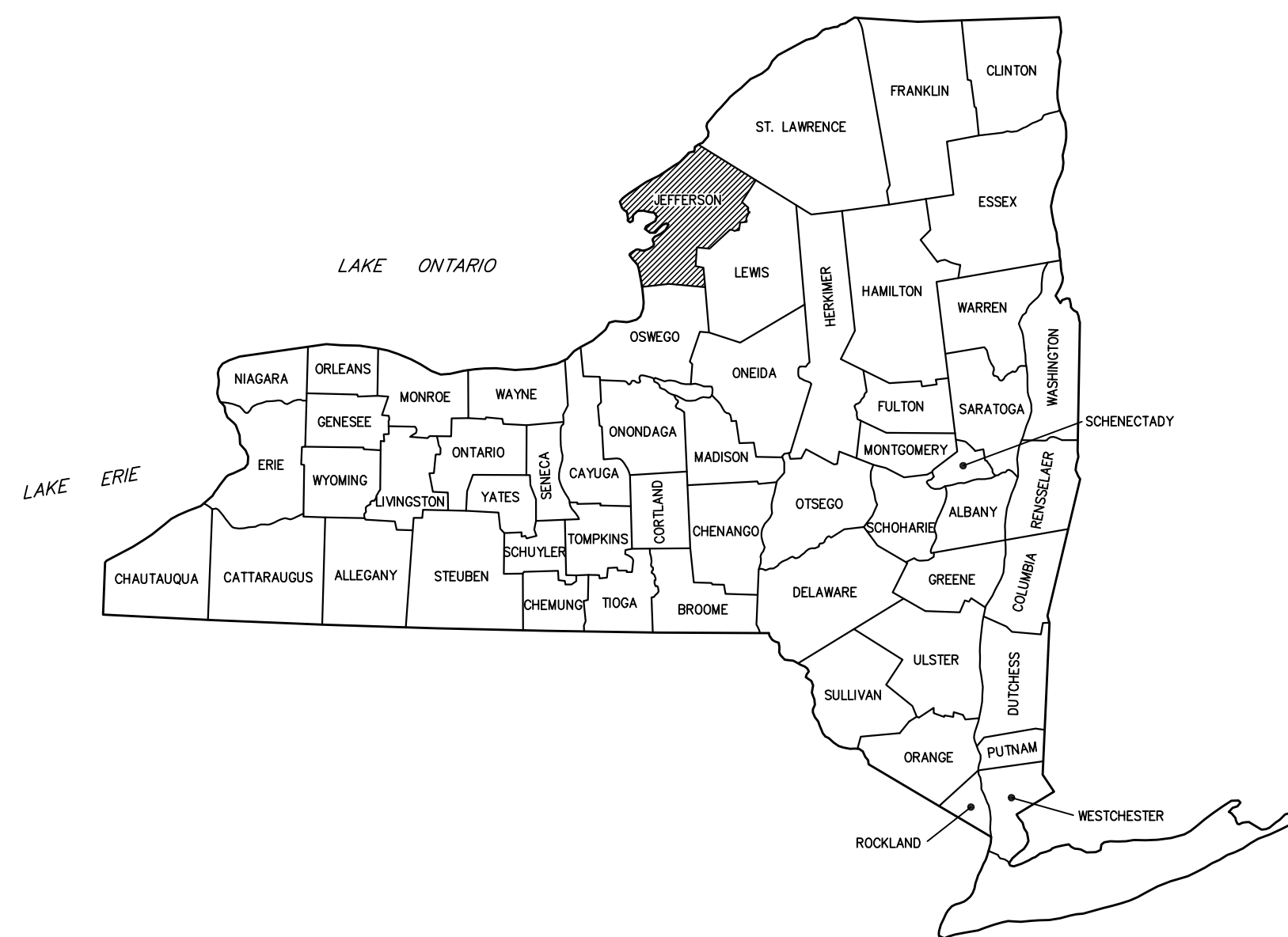
Pump 1 Hours	1539	1544	1545
Pump 1 Hours	Pump 1 Runtime	Pump 2 Hours	Pump 2 Runtime
hrs	hrs	hrs	hrs

Dec-23	9 Sat				
	10 Sun				
	11 Mon				
	12 Tue				
	13 Wed	14586.61	24.10	13427.93	6.93
	14 Thu				
	15 Fri				
	16 Sat				
	17 Sun				
	18 Mon				
	19 Tue	14609.97	23.36	13433.39	5.46
	20 Wed				
	21 Thu				
	22 Fri				
	23 Sat				
	24 Sun				
	25 Mon				
	26 Tue				
	27 Wed	14644.13	34.16	13439.97	6.58
	28 Thu				
29 Fri					
30 Sat					
31 Sun					
MINIMUM					
	13,339.55	5.88	12,952.87	0.53	
MAXIMUM					
	14,644.13	50.48	13,439.97	34.78	
AVERAGE					
	14,089.41	25.91	13,155.17	10.04	
SUM					
	732,649.22	1,347.52	684,068.58	521.88	

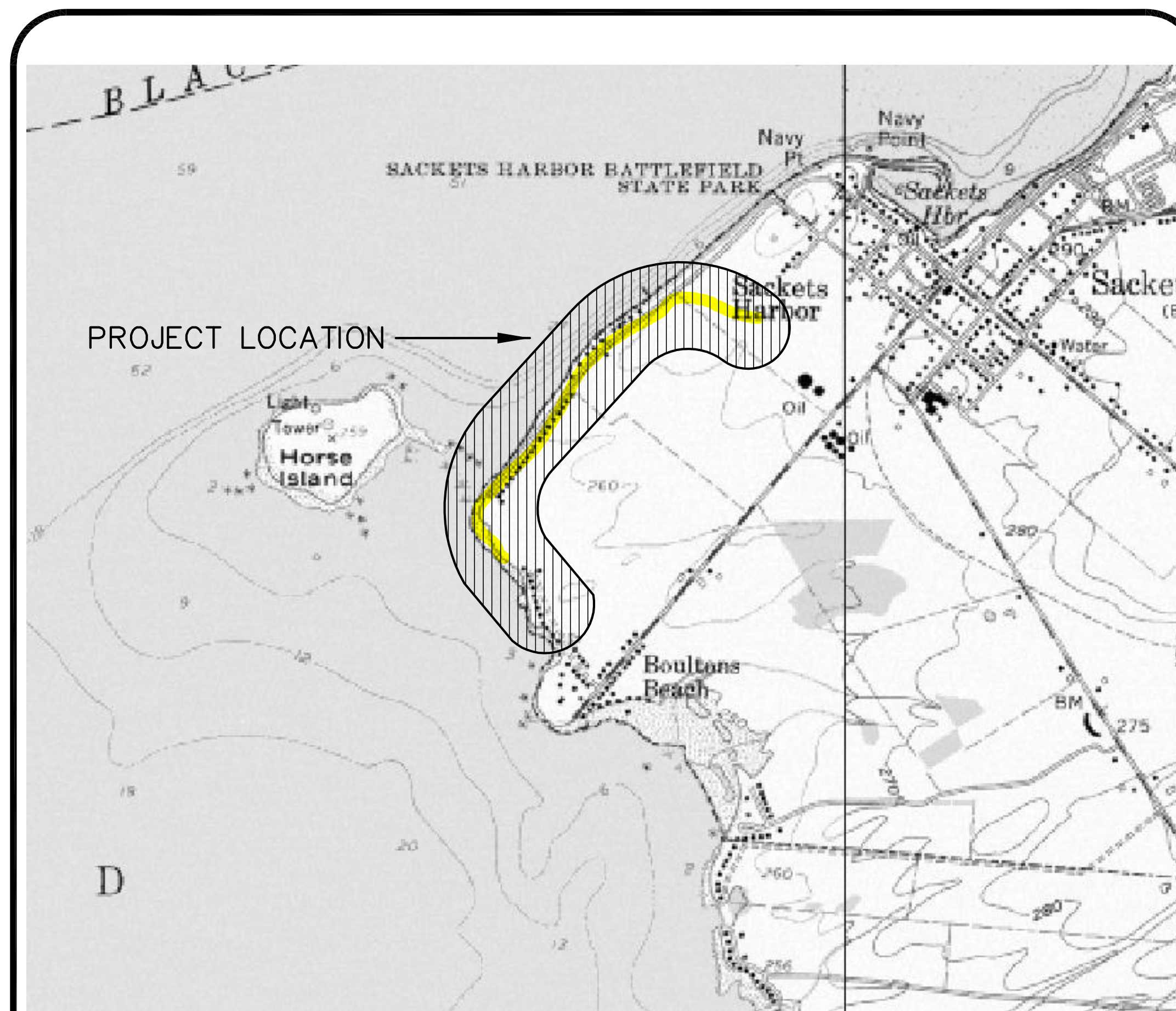
VILLAGE OF SACKETS HARBOR ONTARIO SHORES SEWER COLLECTION PROJECT

TOWN OF HOUNSFIELD COUNTY OF JEFFERSON STATE OF NEW YORK

PROJECT NO. 2000-117S



PROJECT LOCATION
NEW YORK STATE



PROJECT LOCATION
VILLAGE OF SACKETS HARBOR

CONTRACT NO.1 WASTEWATER COLLECTION FACILITIES
CONTRACT NO.2 ELECTRICAL

VILLAGE BOARD

MAYOR	MICHAEL D. HOAGLAND
TRUSTEE	MICHAEL R. KINNE
TRUSTEE	MARK PACILIO
TRUSTEE	DANIEL FRECHETTE
TRUSTEE	ANNE BOMBARD
CLERK	LISA GREGORY
ATTORNEY	SCHWERZMANN AND WISE, P.C.
FUNDING:	USDA RURAL DEVELOPMENT

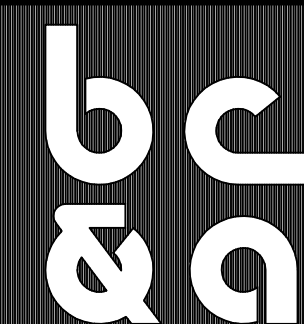
RECORD DRAWINGS

THESE DRAWINGS HAVE BEEN REVISED TO REFLECT MAJOR CHANGES, IF ANY, WHICH OCCURRED DURING CONSTRUCTION. REVISIONS ARE BASED UPON INFORMATION FURNISHED BY THE CONTRACTOR.

DATE _____ PER _____

TO THE BEST OF OUR KNOWLEDGE, INFORMATION AND BELIEF, THE PLANS AND SPECIFICATIONS ARE IN ACCORDANCE WITH APPLICABLE REQUIREMENTS OF THE NEW YORK STATE UNIFORM FIRE PREVENTION AND BUILDING CODE, THE STATE ENERGY CONSERVATION CONSTRUCTION CODE AND INDUSTRIAL CODE RULE #56.

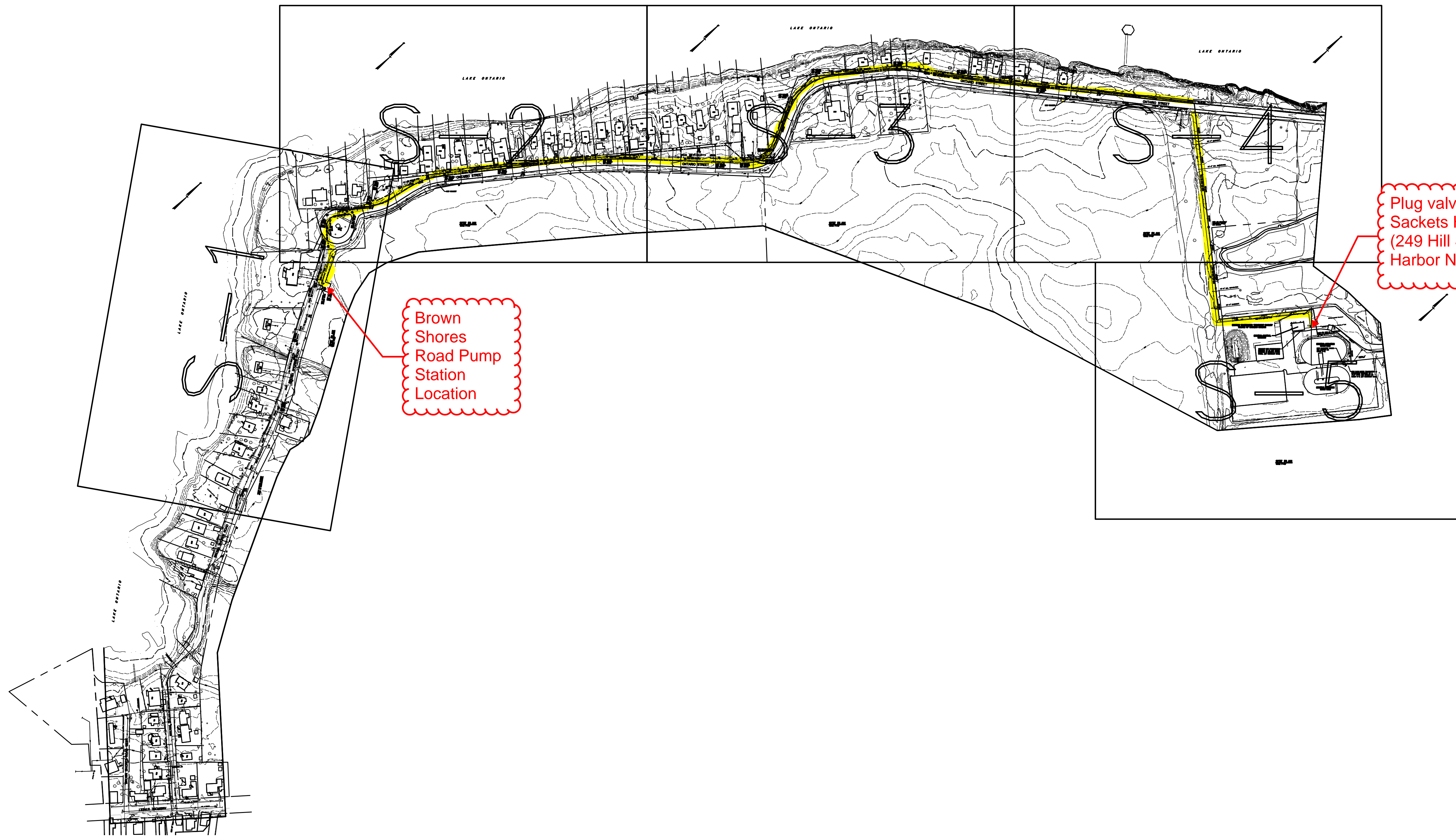
COPYRIGHT 2000 BERNIER, CARR & ASSOCIATES, P.C. ALL RIGHTS RESERVED. REUSE OF THESE DOCUMENTS WITHOUT WRITTEN PERMISSION OF BERNIER, CARR & ASSOCIATES, P.C. IS PROHIBITED. WARNING - IT IS A VIOLATION OF ARTICLE 145, SECTION 7209 AND 7307 OF THE NEW YORK STATE EDUCATION LAW FOR ANY PERSON, UNLESS ACTING UNDER THE DIRECTION OF A REGISTERED ARCHITECT, LICENSED PROFESSIONAL ENGINEER OR LAND SURVEYOR TO ALTER THIS DRAWING. IF ALTERED, SUCH R.A., P.E. OR L.L.S. SHALL AFFIX HIS OR HER SEAL, SIGNATURE, THE DATE, THE NOTATION "ALTERED BY" AND A SPECIFIC DESCRIPTION OF THE ALTERATION.



BERNIER, CARR & ASSOCIATES

engineers • architects • planners • surveyors • construction managers

VILLAGE OF SACKETS HARBOR
ONTARIO SHORES
SEWER COLLECTION PROJECT
ENG. PROJECT NO. 2000-117S



SITE PLAN
SCALE 1"=200'

OVERALL SITE PLAN

**VILLAGE OF SACKETS HARBOR
ONTARIO SHORES
SEWER COLLECTION PROJECT**

Town of Hounsfield - County of Jefferson - State of New York

- Revisions:
- 1.) 8/28/2006 JBE
 - 2.) 10/18/2006 JBE
 - 3.) 12/7/2006 JBE - BID SET
 - 4.) 5/22/2007 JBE - JCT
 - 5.) 5/8/2008 JBE - RECORD DRAWINGS

THE CONTRACTOR SHALL FIELD VERIFY ALL DIMENSIONS AT THE SITE & NOTIFY THE ENGINEER IN WRITING OF ANY DISCREPANCIES.

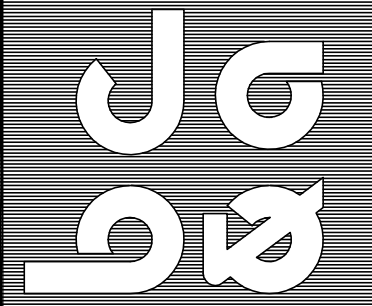
Drawn By JBE	Checked By KDD
Scale 1"=200'	Date 4/18/2006
File No. 2000-1175	Sheet No.

RECORD DRAWINGS

THESE DRAWINGS HAVE BEEN REVISED TO REFLECT MAJOR CHANGES, IF ANY, WHICH OCCURRED DURING CONSTRUCTION. REVISIONS ARE BASED UPON INFORMATION FURNISHED BY THE CONTRACTOR.

DATE _____ PER _____

0-1

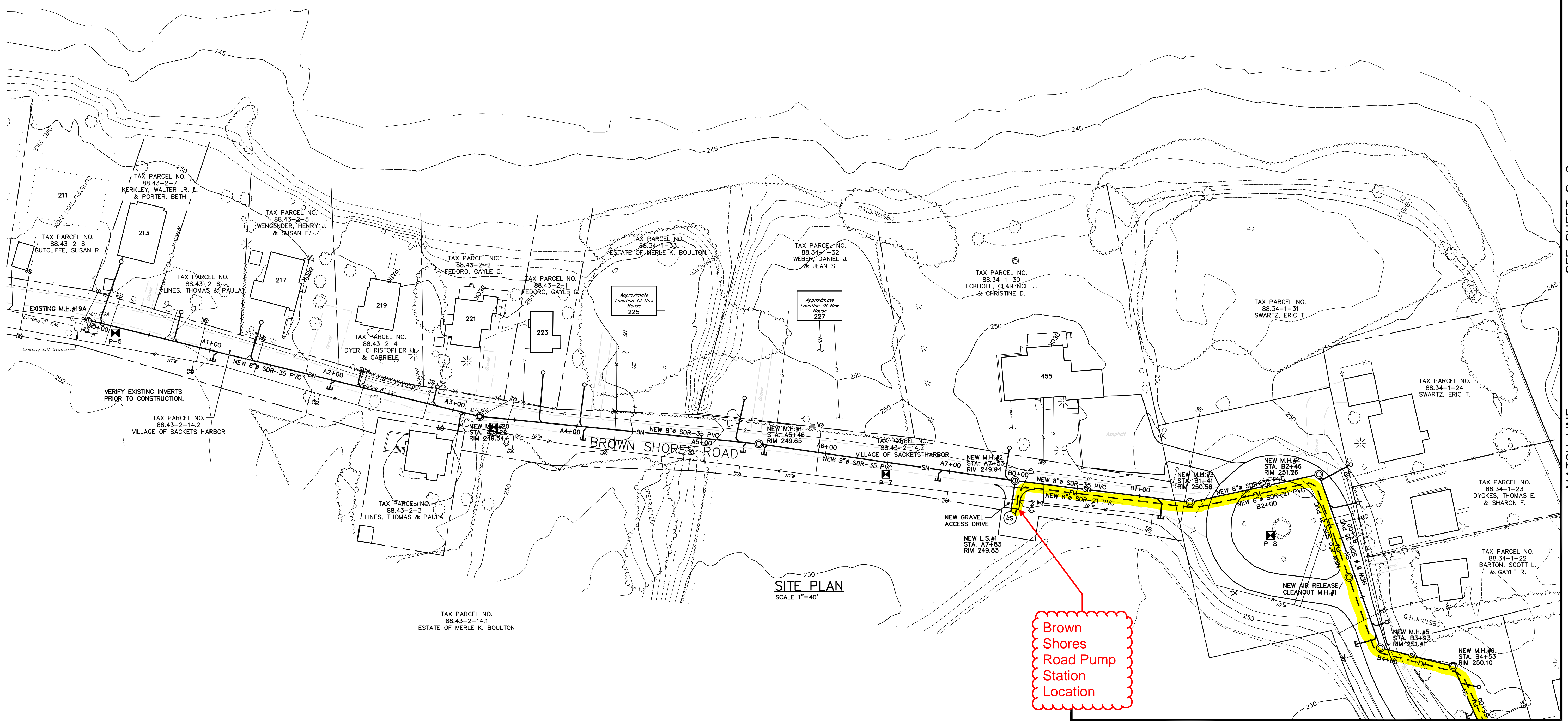
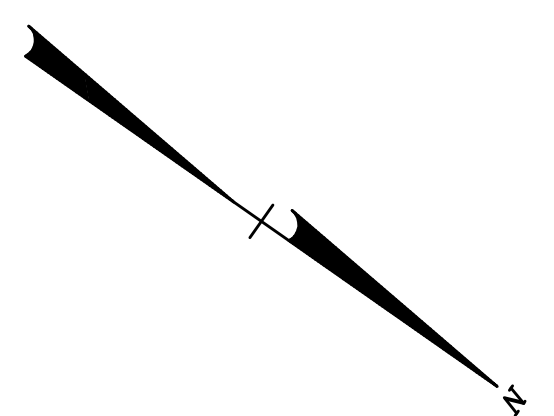


THE BERNIER CARR GROUP

BERNIER, CARR & ASSOCIATES, P.C. • MACH ARCHITECTURE + ENGINEERING, P.C.
engineers • architects • planners • surveyors • construction managers

COPYRIGHT 2001 - BERNIER CARR & ASSOCIATES, P.C. ALL RIGHTS RESERVED. REUSE OF THESE DOCUMENTS WITHOUT THE EXPRESS WRITTEN PERMISSION OF BERNIER, CARR & ASSOCIATES, P.C. IS PROHIBITED. WARNING - IT IS A VIOLATION OF ARTICLE 145 SECTIONS 7200 AND 7207 OF THE NEW YORK STATE EDUCATION LAW FOR ANY PERSON, UNLESS ACTING UNDER THE DIRECTION OF A REGISTERED PROFESSIONAL ENGINEER, ARCHITECT, PLANNER, SURVEYOR, OR LANDSCAPE ARCHITECT, TO REPRODUCE, TRANSMIT, OR IN ANY MANNER SHALL AFFECT HIS OR HER SEAL, SIGNATURE, THE DATE, THE NOTE, ALTERED BY AND A SPECIFIC DESCRIPTION OF THE ALTERATION.

LAKE ONTARIO



SITE PLAN
SCALE 1"=40'

Brown Shores Road Pump Station Location

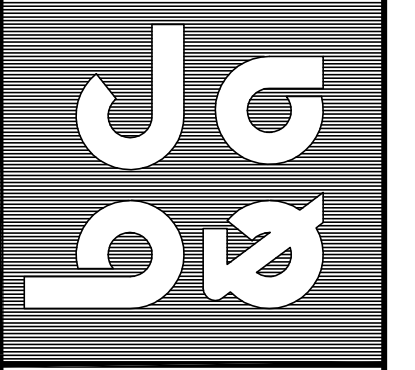
SEE SHEET S-2

MATCH LINE

MATCH LINE

SEE SHEET S-2

THE BERNIER CARR GROUP
BERNIER, CARR & ASSOCIATES, P.C. • MACH ARCHITECTURE + ENGINEERING, P.C.
engineers • architects • planners • surveyors • construction managers



VILLAGE OF SACKETS HARBOR
ONTARIO SHORES
SEWER COLLECTION PROJECT

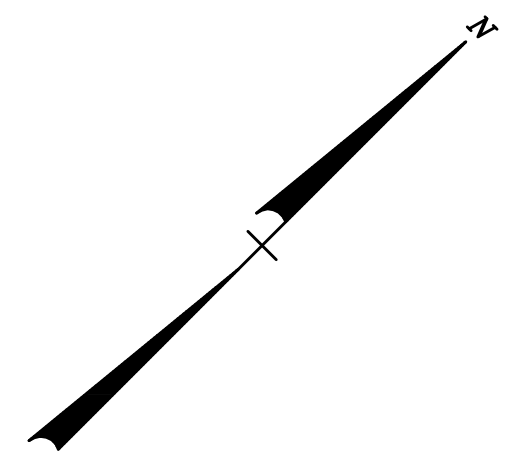
Town of Hounsfield - County of Jefferson - State of New York

- Revisions:
1.) 8/28/2006 JBE
2.) 10/18/2006 JBE
3.) 12/7/2006 JBE - BID SET
4.) 5/22/2007 JBE - JCT
5.) 5/8/2008 JBE - RECORD DRAWINGS

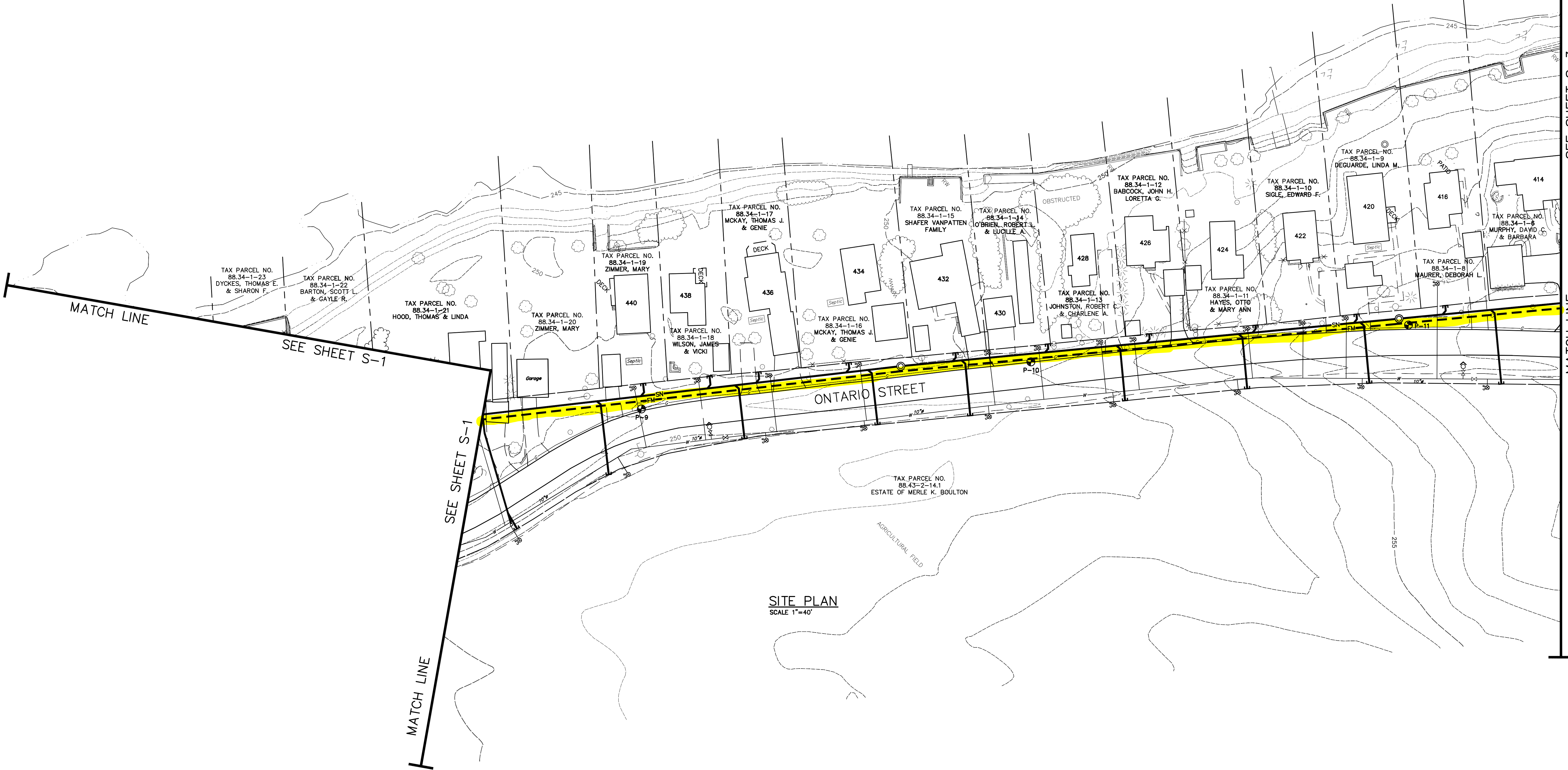
THE CONTRACTOR SHALL FIELD VERIFY ALL DIMENSIONS AT THE SITE & NOTIFY THE ENGINEER IN WRITING OF ANY DISCREPANCIES.

RECORD DRAWINGS
THESE DRAWINGS HAVE BEEN REVISED TO REFLECT MAJOR CHANGES, IF ANY, WHICH OCCURRED DURING CONSTRUCTION. REVISIONS ARE BASED UPON INFORMATION FURNISHED BY THE CONTRACTOR.
DATE _____ PER _____

Drawn By JBE	Checked By KDD
Scale 1"=40'	Date 4/18/2006
File No. 2000-1175	Sheet No. S-1



LAKE ONTARIO



SITE PLAN
SCALE 1"=40'

SEE SHEET S-3

MATCH LINE

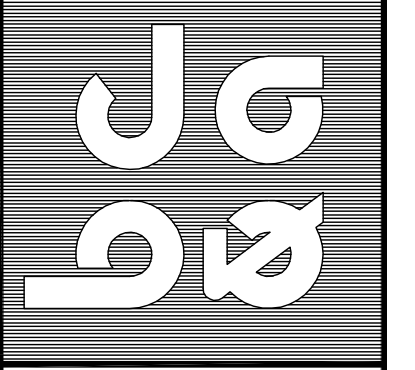
MATCH LINE

SEE SHEET S-1

SEE SHEET S-1

MATCH LINE

THE BERNIER CARR GROUP
BERNIER, CARR & ASSOCIATES, P.C. • MACH ARCHITECTURE + ENGINEERING, P.C.
engineers • architects • planners • surveyors • construction managers



Copyright 2001 - Bernier Carr & Associates, P.C. All rights reserved. Use of these documents without the express written permission of Bernier, Carr & Associates, P.C. is prohibited. Warning - It is a violation of Article 145 Sections 7200 and 7207 of the New York State Education Law for any person, unless acting under the direction of a registered professional engineer, to prepare, issue, seal, sign, or use any drawings, specifications, or reports which shall affect his or her seal, signature, the date, the note, altered by, and a specific description of the alteration.

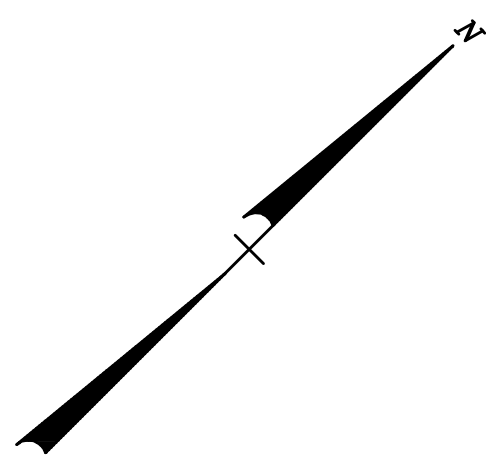
SITE PLAN
VILLAGE OF SACKETTS HARBOR
ONTARIO SHORES
SEWER COLLECTION PROJECT
Town of Hounsfield - County of Jefferson - State of New York

Revisions:

THE CONTRACTOR SHALL FIELD VERIFY ALL DIMENSIONS AT THE SITE & NOTIFY THE ENGINEER IN WRITING OF ANY DISCREPANCIES.
Drawn By: JBE
Checked By: KDD
Scale: 1"=40'
Date: 4/18/2006
File No.: 2000-1175

Sheet No.
S-2

LAKE ONTARIO

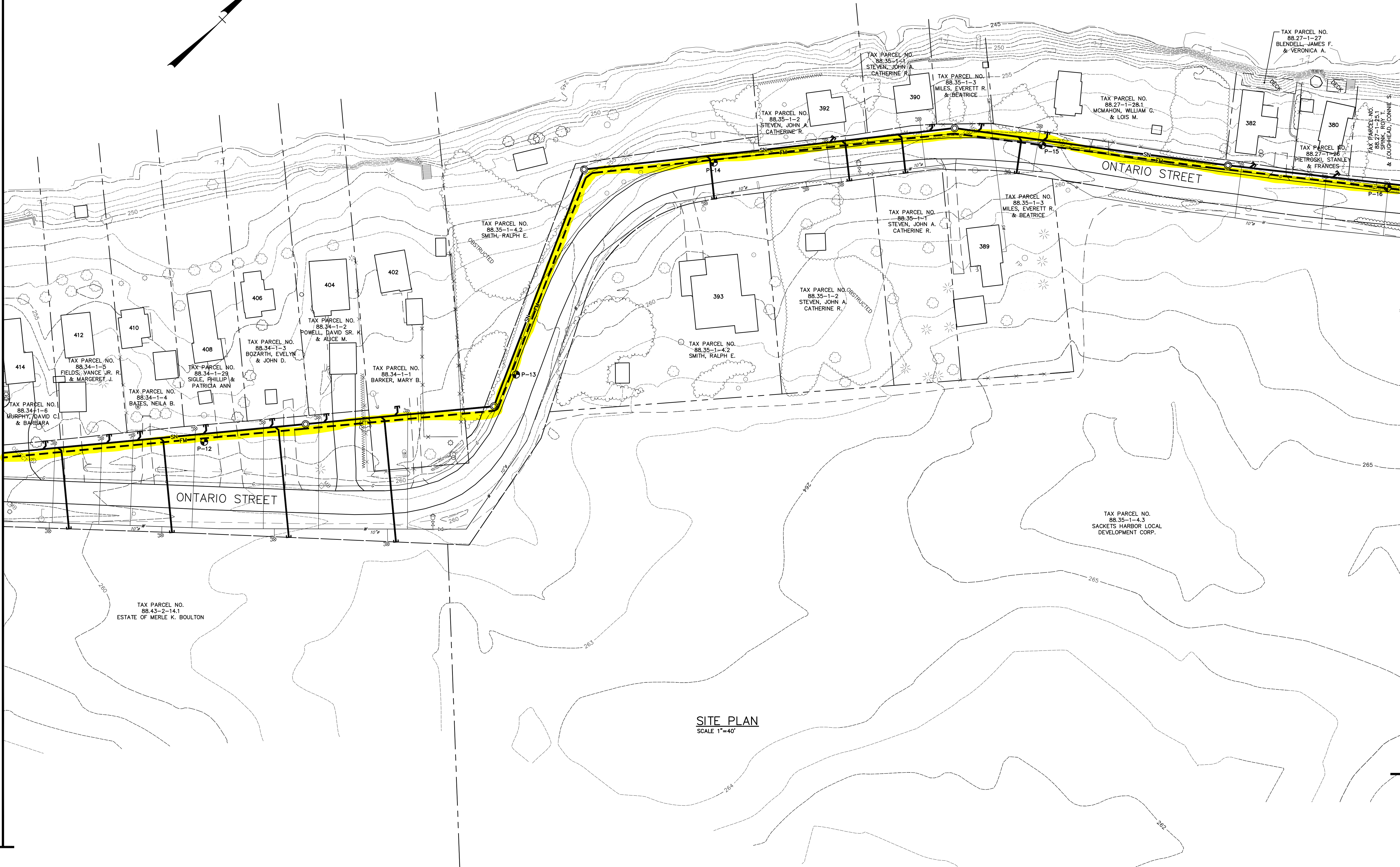


SEE SHEET S-2

MATCH LINE

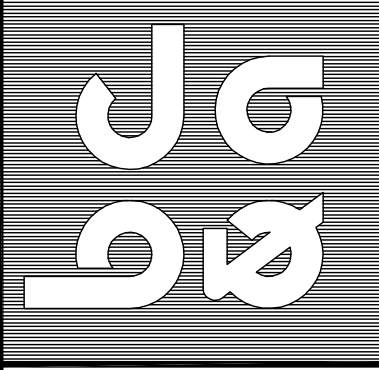
SEE SHEET S-4

MATCH LINE



SITE PLAN
SCALE 1"=40'

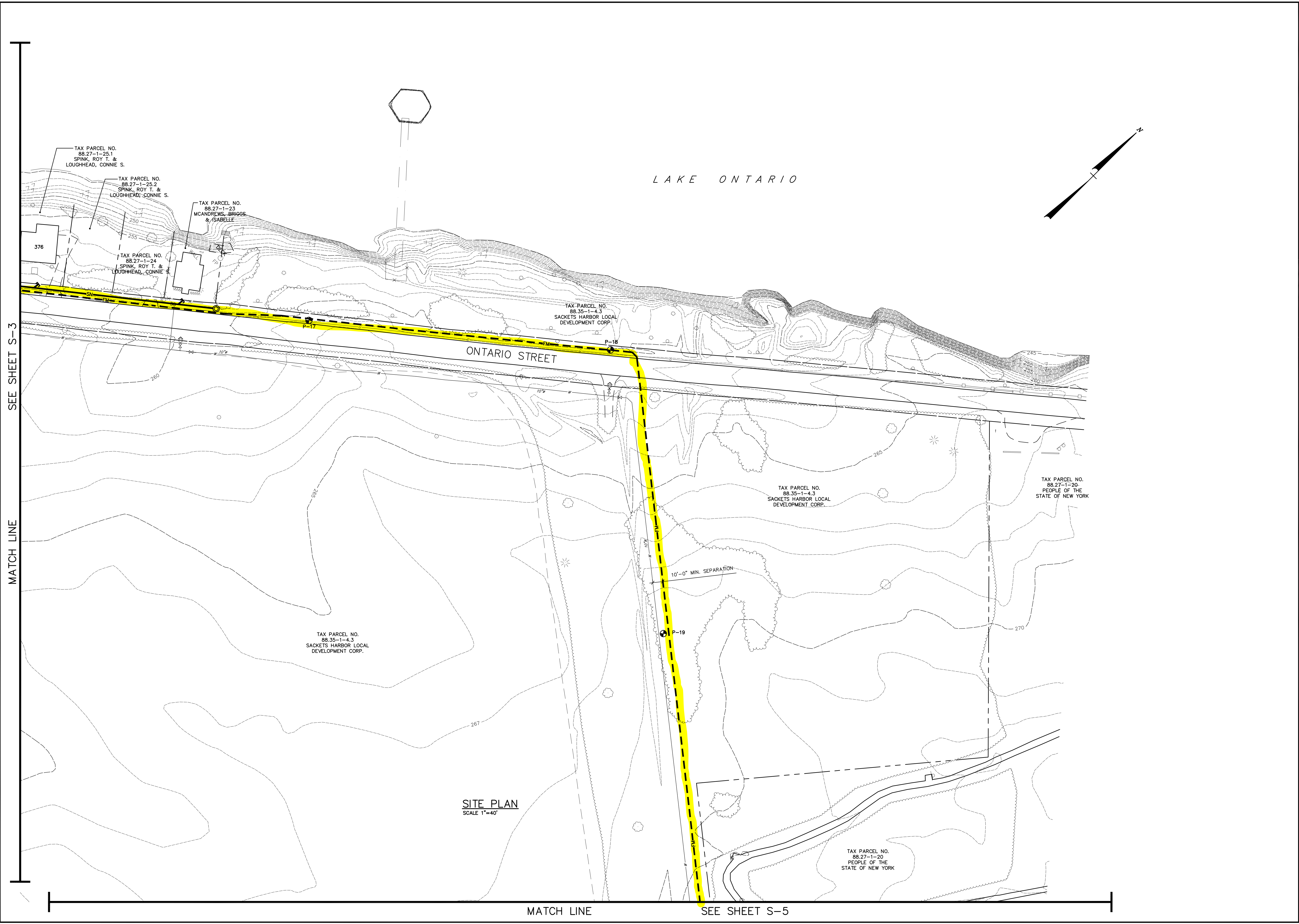
THE BERNIER CARR GROUP
BERNIER, CARR & ASSOCIATES, P.C. • MACH ARCHITECTURE + ENGINEERING, P.C.
engineers • architects • planners • surveyors • construction managers



Copyright 2001 - Bernier Carr & Associates, P.C. All rights reserved. Use of these documents without the express written permission of Bernier, Carr & Associates, P.C. is prohibited. Warning - It is a violation of Article 145 Sections 7200 and 7207 of the New York State Education Law for any person, unless acting under the direction of a registered professional engineer, to reproduce, copy, or disseminate these documents in any form or by any means, electronic or mechanical, including photocopying, recording, or by any information storage and retrieval system, without the prior written consent of Bernier, Carr & Associates, P.C. This document shall apply to its original form and any subsequent amendments shall apply to its original form and any subsequent amendments.

SITE PLAN
VILLAGE OF SACKETS HARBOR
ONTARIO SHORES
SEWER COLLECTION PROJECT
Town of Hounsfield - County of Jefferson - State of New York

Revisions:	
THE CONTRACTOR SHALL FIELD VERIFY ALL DIMENSIONS AT THE SITE & NOTIFY THE ENGINEER IN WRITING OF ANY DISCREPANCIES.	
Drawn By JBE	Checked By KDD
Scale 1"=40'	Date 4/18/2006
File No. 2000-1175	
Sheet No.	



SEE SHEET S-3

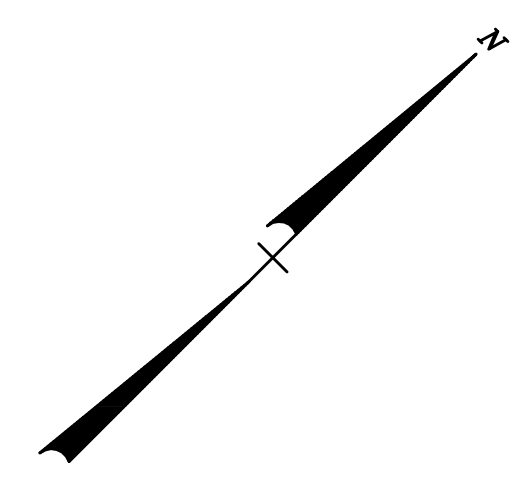
MATCH LINE

SITE PLAN
SCALE 1"=40'

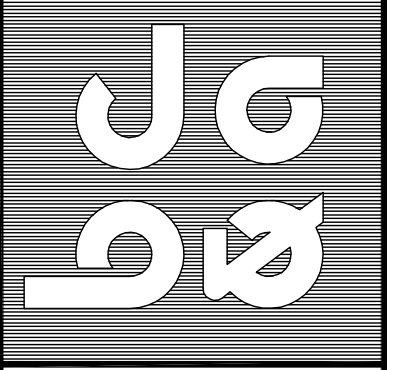
MATCH LINE

SEE SHEET S-5

LAKE ONTARIO



THE BERNIER CARR GROUP
 BERNIER, CARR & ASSOCIATES, P.C. • MACH ARCHITECTURE + ENGINEERING, P.C.
 engineers • architects • planners • surveyors • construction managers

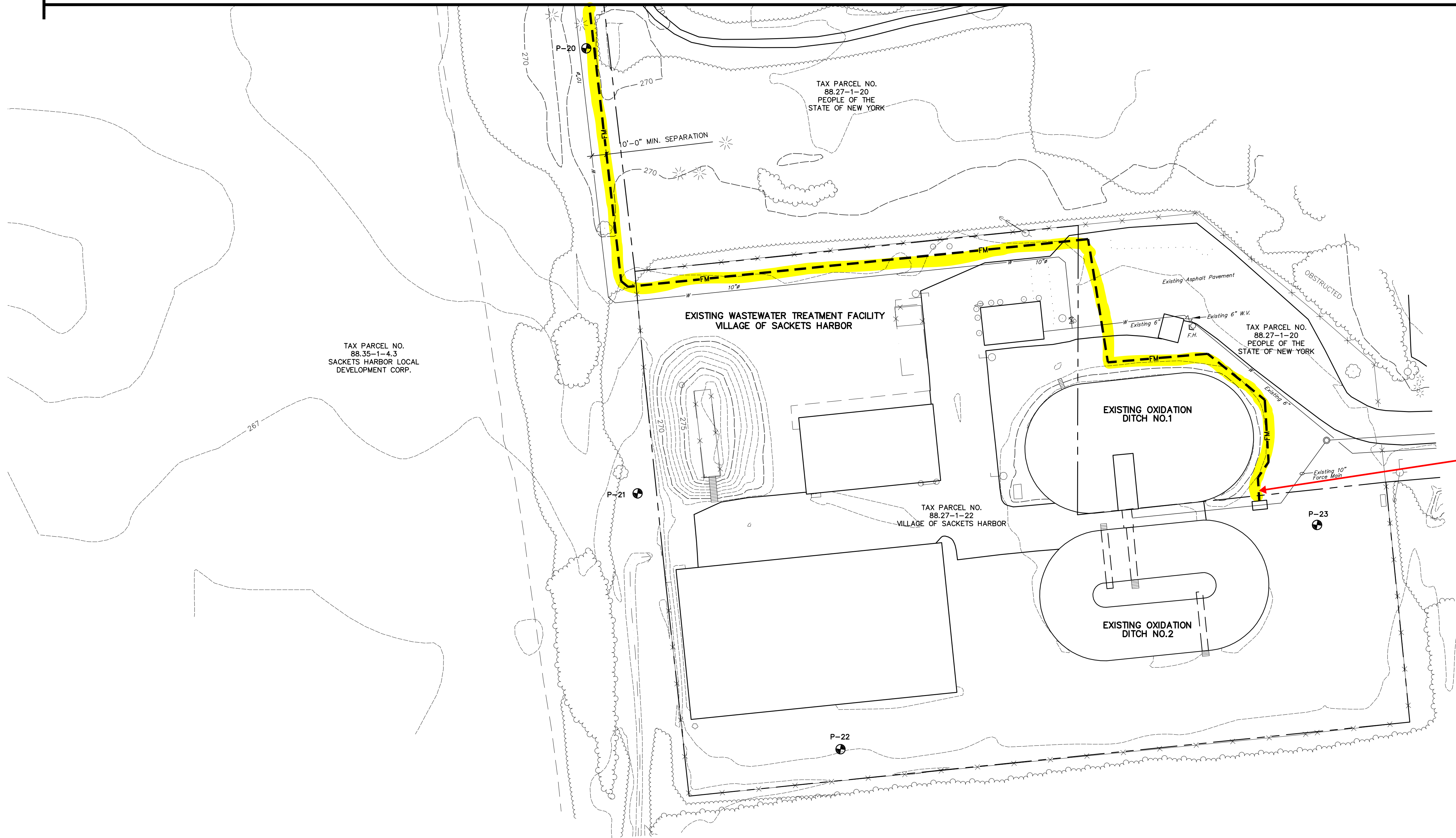


SITE PLAN
 VILLAGE OF SACKETS HARBOR
 ONTARIO SHORES
 SEWER COLLECTION PROJECT
 Town of Hounsfield - County of Jefferson - State of New York

Revisions:	
THE CONTRACTOR SHALL FIELD VERIFY ALL DIMENSIONS AT THE SITE & NOTIFY THE ENGINEER IN WRITING OF ANY DISCREPANCIES.	
Drawn By TFT	Checked By KDD
Scale 1"=40'	Date 4/18/2006
File No. 2000-1175	
Sheet No.	
S-4	

MATCH LINE

SEE SHEET S-4



Plug valve location at
 Sackets Harbor WWTP
 (249 Hill Street, Sackets
 Harbor NY 13685)

TAX PARCEL NO.
 88.35-1-4.3
 SACKETS HARBOR LOCAL
 DEVELOPMENT CORP.

TAX PARCEL NO.
 88.27-1-20
 PEOPLE OF THE
 STATE OF NEW YORK

EXISTING WASTEWATER TREATMENT FACILITY
 VILLAGE OF SACKETS HARBOR

EXISTING OXIDATION
 DITCH NO.1

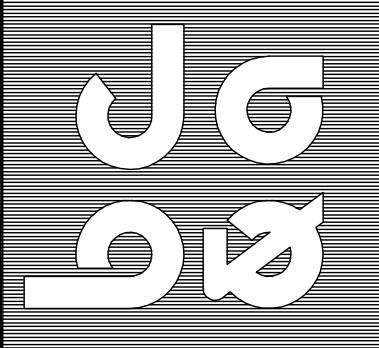
TAX PARCEL NO.
 88.27-1-22
 VILLAGE OF SACKETS HARBOR

EXISTING OXIDATION
 DITCH NO.2

TAX PARCEL NO.
 88.27-1-20
 PEOPLE OF THE
 STATE OF NEW YORK

SITE PLAN
 SCALE 1"=40'

THE BERNIER CARR GROUP



BERNIER, CARR & ASSOCIATES, P.C. • MACH ARCHITECTURE + ENGINEERING, P.C.
 engineers • architects • planners • surveyors • construction managers

COPYRIGHT 2001 - BERNIER, CARR & ASSOCIATES, P.C. ALL RIGHTS RESERVED. REUSE OF THESE DOCUMENTS WITHOUT THE EXPRESS WRITTEN PERMISSION OF BERNIER, CARR & ASSOCIATES, P.C. IS PROHIBITED. WARNING - IT IS A VIOLATION OF ARTICLE 145 SECTIONS 7200 AND 7207 OF THE NEW YORK STATE EDUCATION LAW FOR ANY PERSON, UNLESS ACTING UNDER THE DIRECTION OF A REGISTERED PROFESSIONAL ENGINEER, ARCHITECT, PLANNER, SURVEYOR OR LANDSCAPE ARCHITECT, TO REPRODUCE, TRANSMIT, COPY, ALTER, REPRODUCE OR IN ANY MANNER SHALL AFFECT HIS OR HER SEAL, SIGNATURE, THE DATE, THE NOTE "ALTERED BY" AND A SPECIFIC DESCRIPTION OF THE ALTERATION.

SITE PLAN
 VILLAGE OF SACKETS HARBOR
 ONTARIO SHORES
 SEWER COLLECTION PROJECT
 Town of Hounsfield - County of Jefferson - State of New York

Revisions:

THE CONTRACTOR SHALL FIELD VERIFY ALL DIMENSIONS AT THE SITE & NOTIFY THE ENGINEER IN WRITING OF ANY DISCREPANCIES.

Drawn By TFT	Checked By KDD
Scale 1"=40'	Date 4/18/2006
File No. 2000-1175	
Sheet No.	

S-5