



September 8, 2020

**ADDENDUM NO. 2 to
CONTRACT DOCUMENTS for
TROY HOUSING AUTHORITY (BCA2019-527)
UFAS Improvements at Corliss Park Apartments, at Griswold Heights Apartments**

This Addendum has three (3) pages, including one (1) 8.5" x 11" sketch and one (1) 24" x 36" drawing sheet.

SPECIFICATION ITEMS: None

DRAWING ITEMS:

1. COVER SHEET:

- a. INDEX OF DRAWINGS: Revise the Index of Drawings as indicated on attached sketch SK-1 (1 page).

2. SHEET 2-M-101 GRISWOLD HEIGHTS MECHANICAL NEW WORK:

- a. Add attached drawing sheet "2-M-101 GRISWOLD HEIGHTS MECHANICAL NEW WORK" to the Contract Documents in numerical order.

3. SHEET 2-A600 INTERIOR ELEVATIONS:

- a. Revise drawing title "INTERIOR ELEVATIONS" to read "ENLARGED PLANS AND INTERIOR ELEVATIONS".

SK – 1:

INDEX OF DRAWINGS

| DWG NO. | DRAWING TITLE |
|-----------|--|
| 1-ASB-100 | CORLISS PARK ASBESTOS ABATEMENT |
| 1-G100 | SITE PLAN - CORLISS PARK |
| 1-A001 | ROOM FINISH SCHEDULE AND DOOR SCHEDULE - CORLISS PARK |
| 1-A100 | OVERALL FLOOR PLANS |
| 1-A101 | FLOOR PLANS - REMOVALS AND NEW WORK |
| 1-A600 | ENLARGED PLAN AND INTERIOR ELEVATIONS |
| P-001 | PLUMBING GENERAL INFORMATION GRISWOLD HEIGHTS AND CORLISS PARK |
| 1-P-100 | CORLISS PARK PLUMBING |
| M-001 | MECHANICAL GENERAL INFORMATION GRISWOLD HEIGHTS AND CORLISS PARK |
| 1-M-100 | CORLISS PARK MECHANICAL |
| E-001 | ELECTRICAL GENERAL INFORMATION GRISWOLD HEIGHTS AND CORLISS PARK |
| 1-E-100 | CORLISS PARK ELECTRICAL |
| 2-ASB-101 | GRISWOLD HEIGHTS ASBESTOS ABATEMENT |
| 2-G100 | OVERALL SITE PLAN - GRISWOLD HEIGHTS |
| 2-C100 | SITE DETAILS |
| 2-A001 | ROOM FINISH SCHEDULE AND DOOR SCHEDULE - GRISWOLD HEIGHTS |
| 2-A100 | ENLARGED FLOOR PLANS - APARTMENT 7 |
| 2-A101 | ENLARGED FLOOR PLANS - APARTMENT 7 |
| 2-A600 | ENLARGED PLANS AND INTERIOR ELEVATIONS |
| P-001 | PLUMBING GENERAL INFORMATION GRISWOLD HEIGHTS AND CORLISS PARK |
| 2-P-100 | GRISWOLD HEIGHTS PLUMBING |
| 2-P-101 | GRISWOLD HEIGHTS PLUMBING |
| M-001 | MECHANICAL GENERAL INFORMATION GRISWOLD HEIGHTS AND CORLISS PARK |
| 2-M-100 | GRISWOLD HEIGHTS MECHANICAL REMOVALS |
| 2-M-101 | GRISWOLD HEIGHTS MECHANICAL NEW WORK |
| E-001 | ELECTRICAL GENERAL INFORMATION GRISWOLD HEIGHTS AND CORLISS PARK |
| 2-E-100 | GRISWOLD HEIGHTS ELECTRICAL |
| | |
| | |
| | |

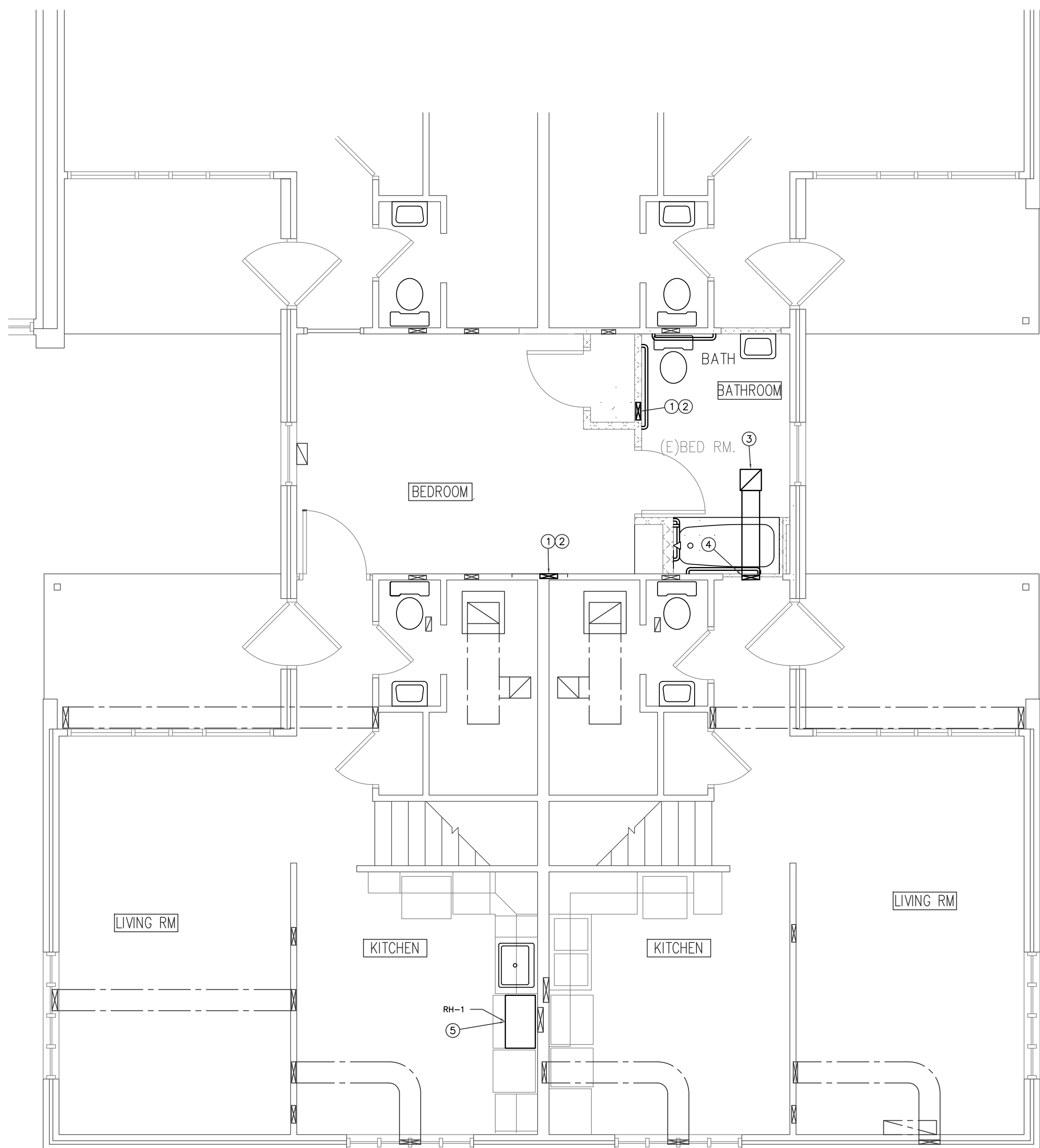
END OF ADDENDUM NO. 2

1 2 3 4 5 6 7 8 9 10 11 12 13 14

M

CONSTRUCTION NOTES NEW WORK:

- ① NEW 10"x3-1/2" DUCT UP FROM BELOW, CONCEAL WITHIN WALL CONSTRUCTION.
- ② PROVIDE NEW 22" WALL GRILLE, HIGH ON WALL.
- ③ NEW EXHAUST FAN EF-1, RUN DUCTWORK UP IN WALL AS INDICATED.
- ④ NEW 8"x3-1/4" RUN UP WALL, CONCEAL WITHIN WALL CONSTRUCTION.
- ⑤ NEW RECIRCULATING EXHAUST HOOD, MOUNT ABOVE STOVE, KEEP EXISTING SUPPLY GRILLE CLEAR AND OPERATIONAL.



FIRST FLOOR - APARTMENT 7 - NEW WORK

A-7

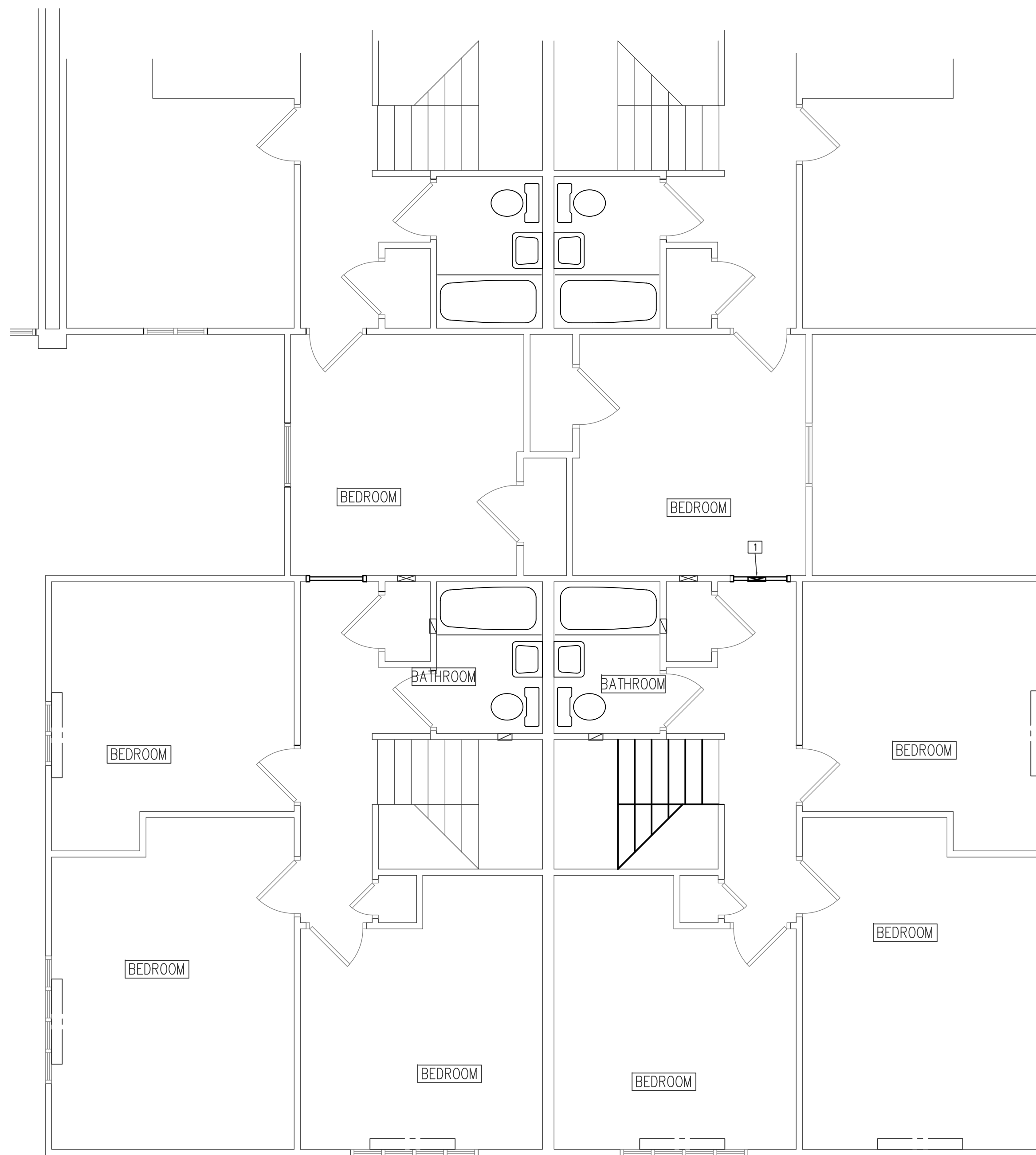
1-M-101

1/4" = 1'-0"

1 2 3 4 5 6 7 8 9 10 11 12 13 14

CONSTRUCTION NOTES MODIFICATIONS:

- ① NEW 8"x3-1/4" DUCTWORK RUN UP IN EXISTING WALL, CUT AND PATCH WALL TO MATCH EXISTING, RUN DUCTWORK UP TO ATTIC SPACE, TRANSITION TO 5" DIA ROUND, PROVIDE ROOF CAP AT EXTERIOR PENETRATION.



SECOND FLOOR - APARTMENT 7 - MODIFICATIONS

A-14

1-M-101

1/4" = 1'-0"

COPYRIGHT 2020
BERNIER, CARR & ASSOCIATES, ENGINEERS, ARCHITECTS & LAND SURVEYORS, PC
UNAUTHORIZED ALTERATIONS OR ADDITIONS TO THIS DOCUMENT IS A VIOLATION OF SECTION 68.5(b) OF THE REGULATIONS OF THE COMMISSIONER OF THE NEW YORK STATE EDUCATION DEPARTMENT.

M

L

K

J

H

G

F

E

D

C

B

A

KEY PLAN

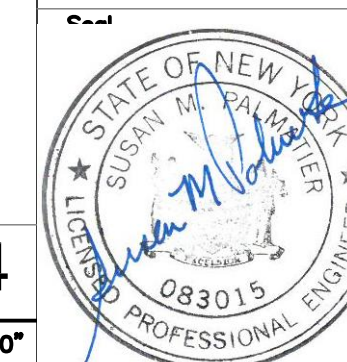
| No | REVISIONS/SUBMISSIONS | Date |
|----|-----------------------|----------|
| 1 | ADDENDUM #2 | 08/08/20 |

BCA BERNIER, CARR & ASSOCIATES, ENGINEERS
ARCHITECTS & LAND SURVEYORS, PC
516 Broadway, Saratoga Springs, NY 12866
Tel (518) 261-8678

CONSULTANT:
 H2F CONSULTANTS IN ENGINEERING
1 VAN PATTEN DRIVE, CLIFTON PARK
NEW YORK, 12065
(518) 877-8566

PROJECT TITLE:
TROY HOUSING AUTHORITY
UFAS IMPROVEMENTS FOR TROY HOUSING AUTHORITY
AT CORLISS PARK APARTMENTS AT GRISWOLD HEIGHTS APARTMENTS

DRAWING TITLE:
GRISWOLD HEIGHTS MECHANICAL NEW WORK



| | |
|---------------|------------------------|
| Designed SMP | Project No. 2019005.00 |
| Drawn SMP | Scale AS NOTED |
| Checked SMP | Drawing No. |
| Reviewed SMP | 2-M-101 |
| Date 08/14/20 | |

1 2 3 4 5 6 7 8 9 10 11 12 13 14