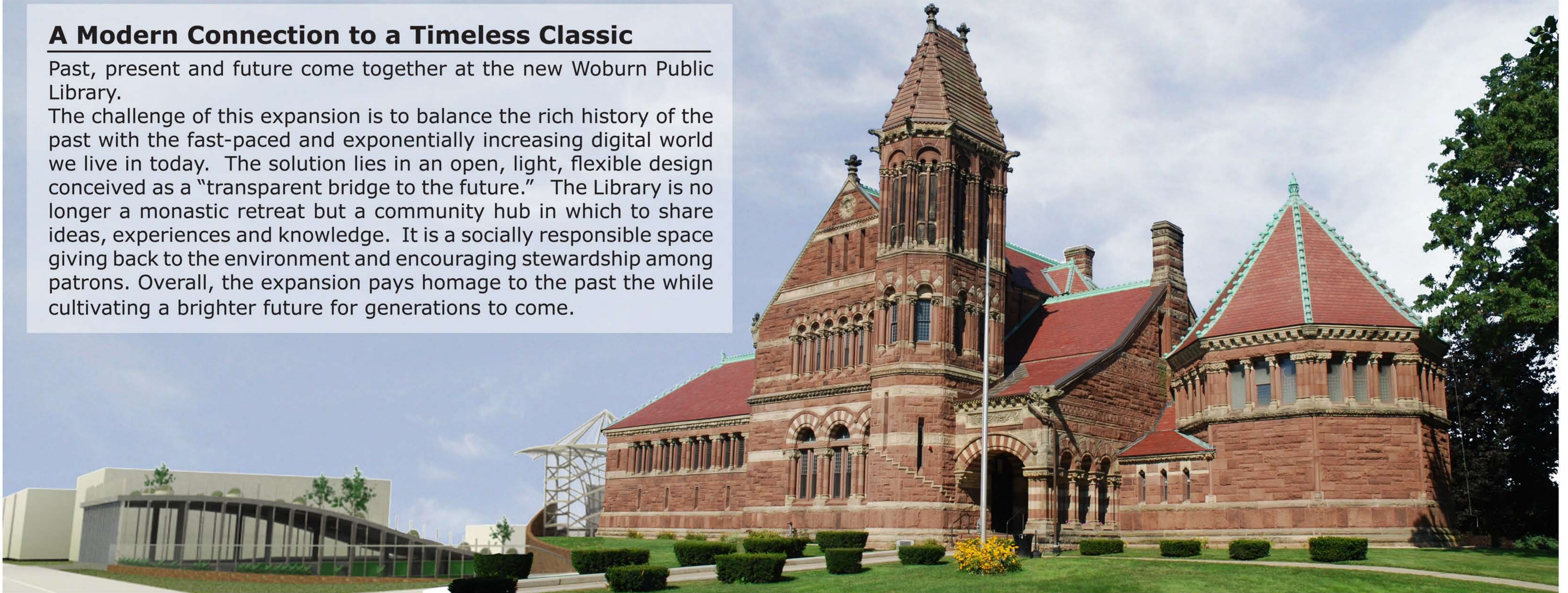


# Woburn Public Library Addition – Transparent Bridge

## **A Modern Connection to a Timeless Classic**

Past, present and future come together at the new Woburn Public Library.

The challenge of this expansion is to balance the rich history of the past with the fast-paced and exponentially increasing digital world we live in today. The solution lies in an open, light, flexible design conceived as a “transparent bridge to the future.” The Library is no longer a monastic retreat but a community hub in which to share ideas, experiences and knowledge. It is a socially responsible space giving back to the environment and encouraging stewardship among patrons. Overall, the expansion pays homage to the past the while cultivating a brighter future for generations to come.



From the street, the existing library dominates the site, an icon of community history and tradition. The addition swells gently out of the landscape inviting patrons to take a closer look at what lies ahead.



An aerial perspective of the site highlights the below-grade public courtyard and the circulation core which ties the new addition to the existing building. Solar tubes for daylighting extend from the undulating vegetated roof above the community space.



Pedestrians walking by have a unique vantage point of the “digital wall” which displays news and community events. Vertical fins shade the eastern façade and add character. Solar panels on south facade take advantage of alternative energy solutions.

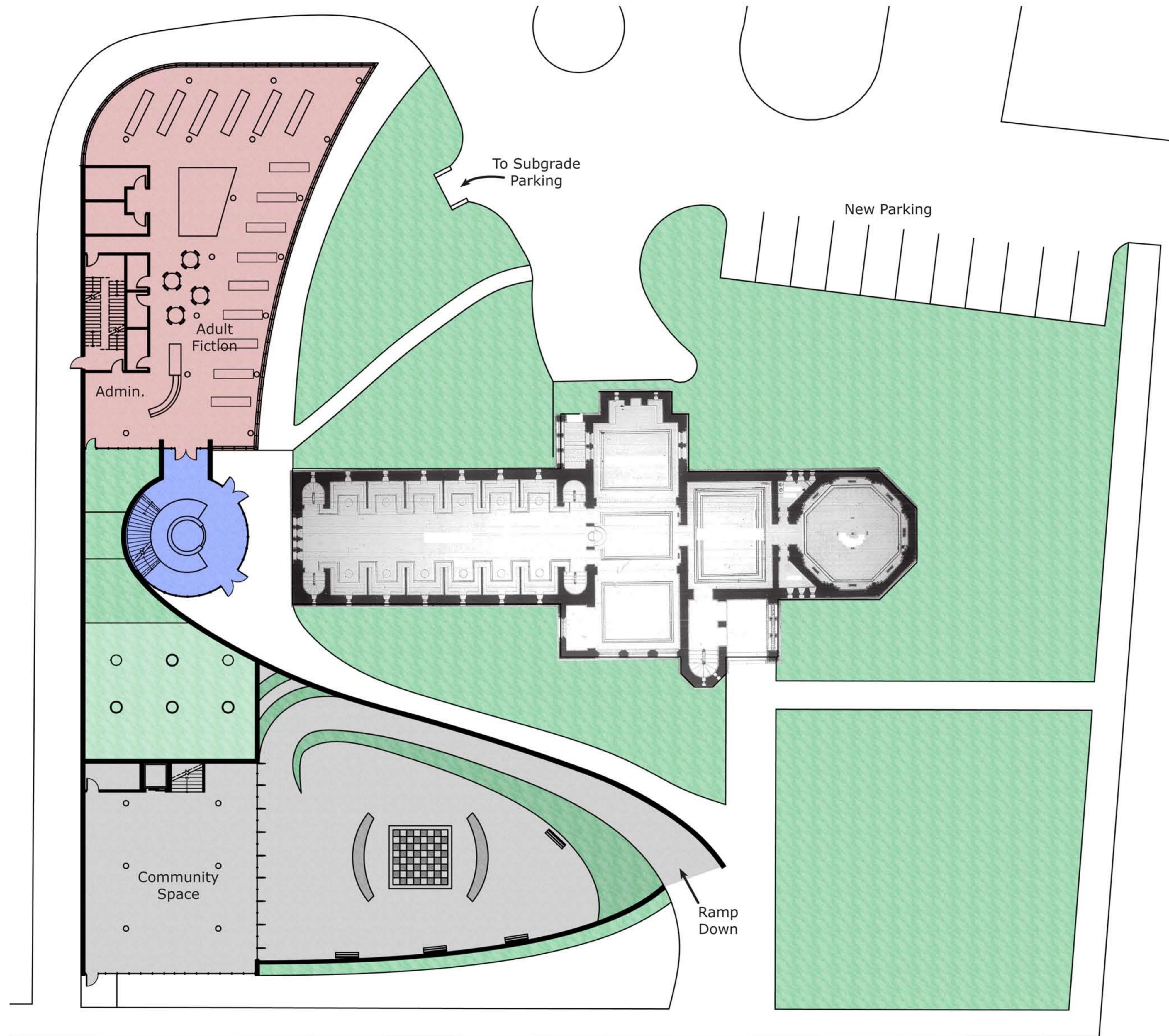


The public courtyard is envisioned as a flexible community space with a casual atmosphere. The life-sized chessboard in the middle of the square can be converted into a stage for community events.

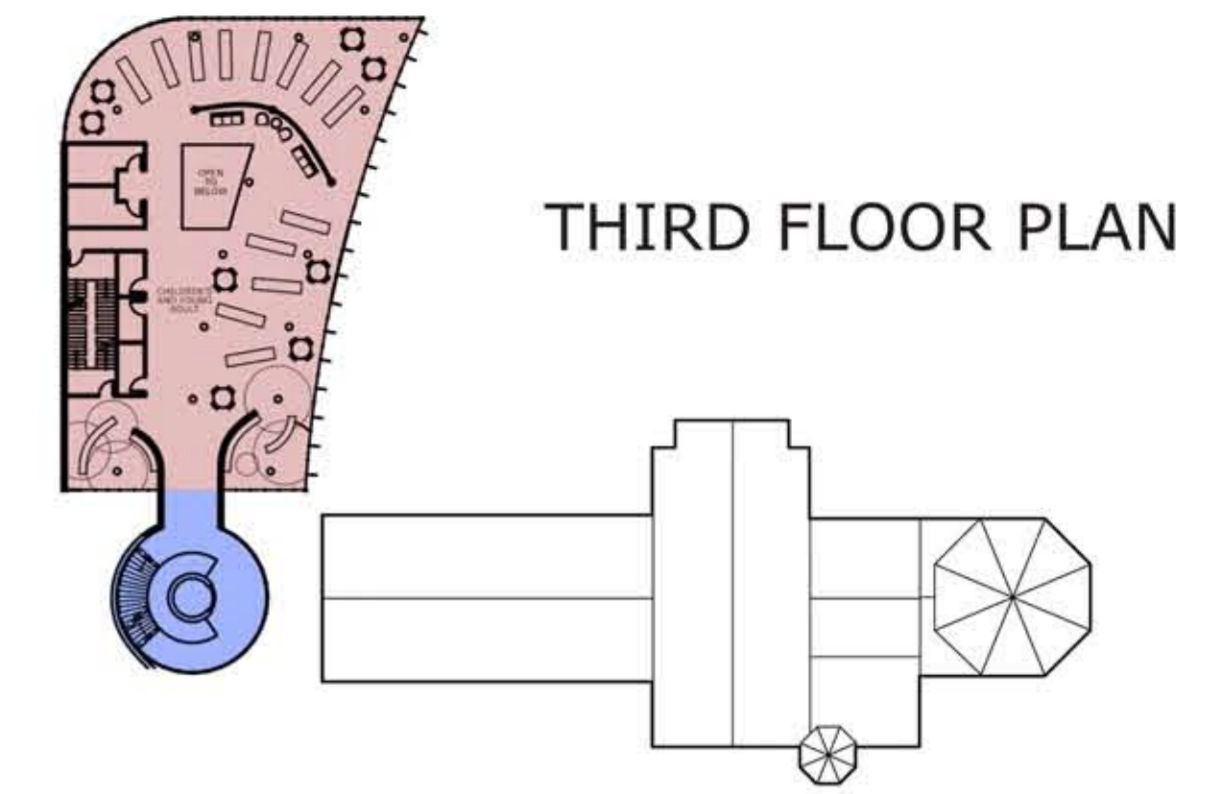


The Community Room looks out onto the public courtyard. The courtyard features a large sloping ramp with rusticated stonework to complement the materials of the existing library.

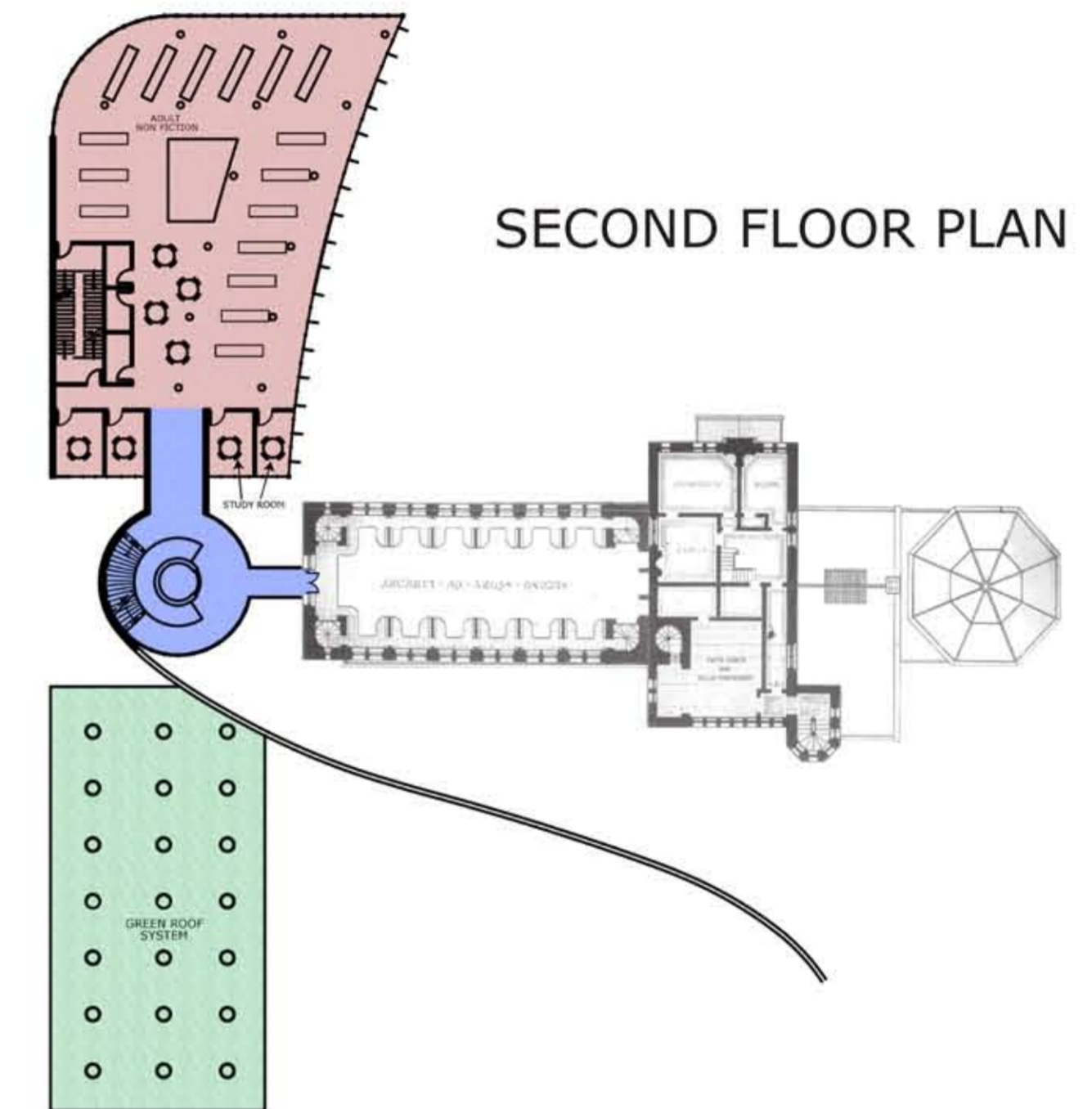
# Woburn Public Library Addition – Transparent Bridge



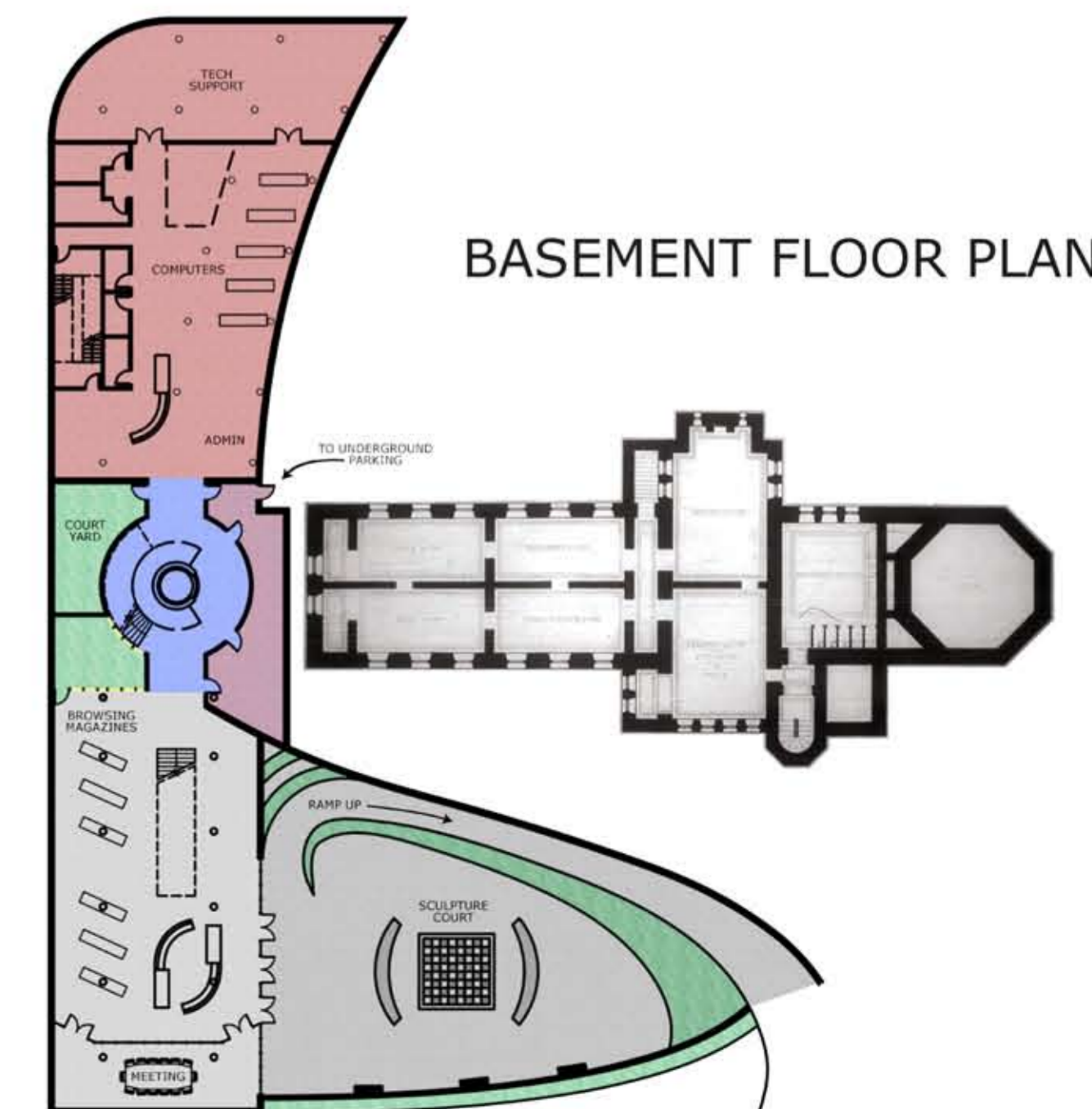
FIRST FLOOR/SITE PLAN



THIRD FLOOR PLAN



SECOND FLOOR PLAN



BASEMENT FLOOR PLAN

# Woburn Public Library Addition – Transparent Bridge



A section through the addition reveals the undulating form and open nature of the space. The two-story community space is separated from the four-story area which houses the stacks by the sculptural circulation core. An open air atrium penetrates down all four stories of the stacks to take advantages of daylight penetration.



The north-east façade utilizes vertical shading devices to minimize heat gain through the curtain wall. The addition hovers next to the massive form of the existing library tied to it by a transparent glass bridge on the second story.



A close-up of the circulation core reveals its airy nature and sculptural quality. Web-like sunshades extend to the south to shade the structure. The core is portal through which pedestrians enter the addition from the existing library. It acts as the counter-point to Richardson's heavy masonry octagon in the existing structure.



The below-grade courtyard and community wing keep the new addition in scale with surrounding context.



The rusticated stone wall wraps around the rear of the circulation core to translate the materiality of the existing building into the new addition. Stepped courtyards allow daylight